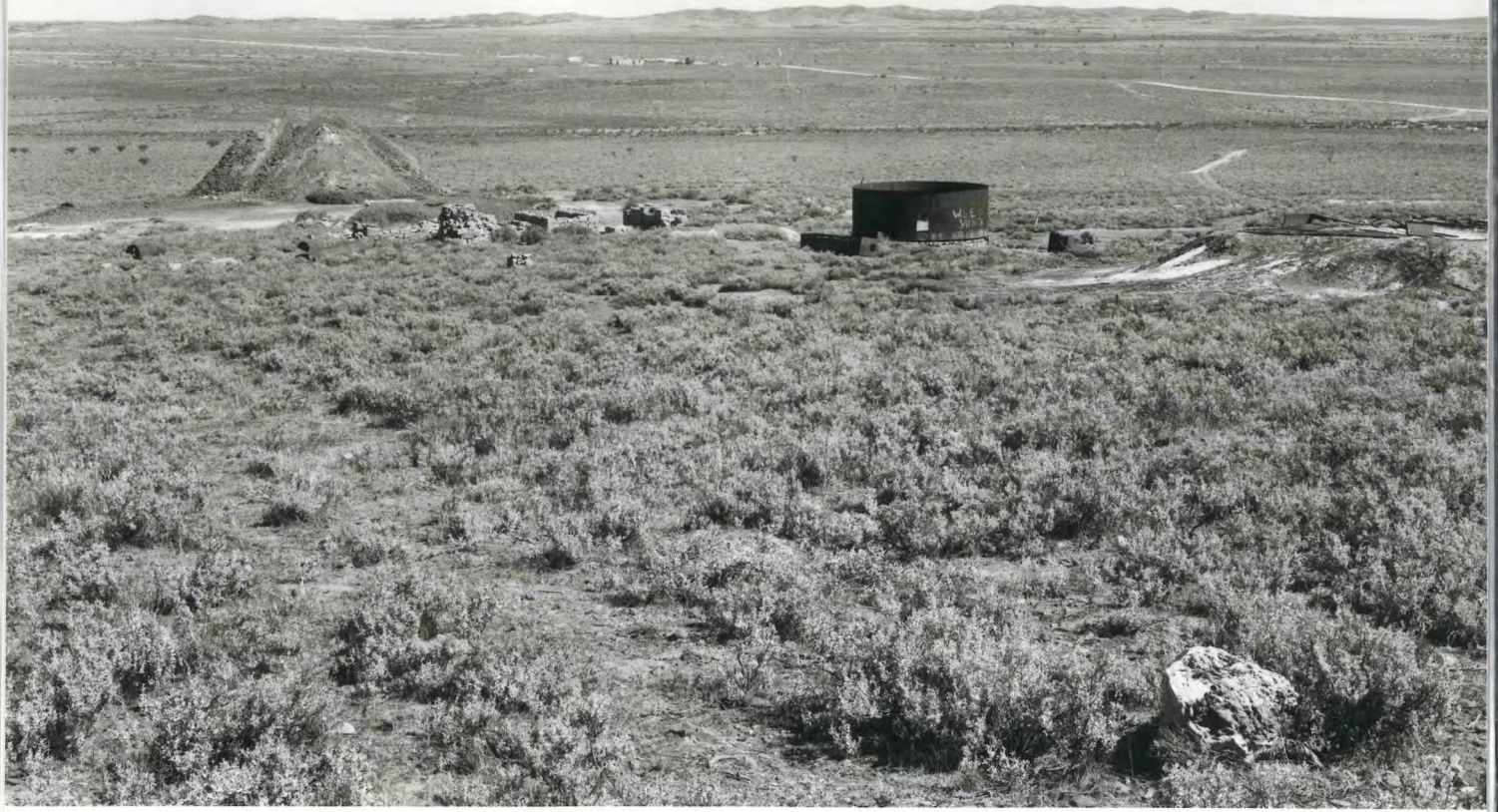


Alma and Victoria Gold Mines, Waukaringa (10316)

The Alma-Victoria gold mine was the largest single gold mine in South Australia, contributing in the 1870s to the second peak in South Australia's gold production after that produced by the Echunga mines in the 1850s. Worked from 1873 to 1894, it comprised extensive underground workings and a variety of surface structures, of which the chimney and flue are the most prominent remains. The Waukaringa mines were also noted for the variety of developments and experiments which were undertaken on the site for the extraction of gold from the ore. (HSA:SL 8/98)



FILM 73
NO 8

ALMA AND VICTORIA MINE

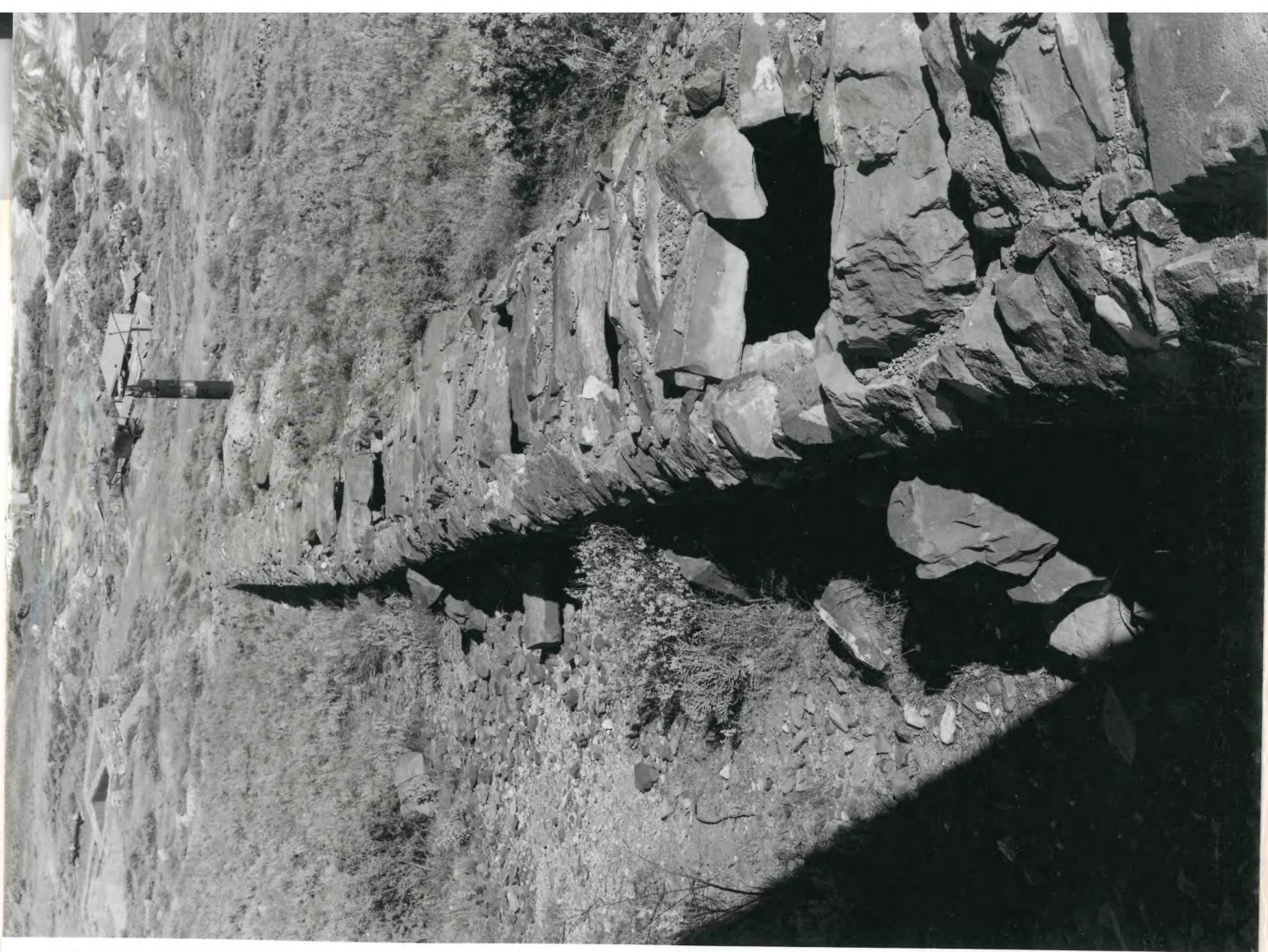
WAUKARINGA
7-3-79



FILM 74
NO 3

ALMA AND VICTORIA MINE FROM EAST

WAUKARINGA
7-3-79



FILM 74
NO 7

VIEW SOUTH DOWN DRAUGHT
TUNNEL, ALMA AND VICTORIA MINE

WAIKARINGA
7-3-79

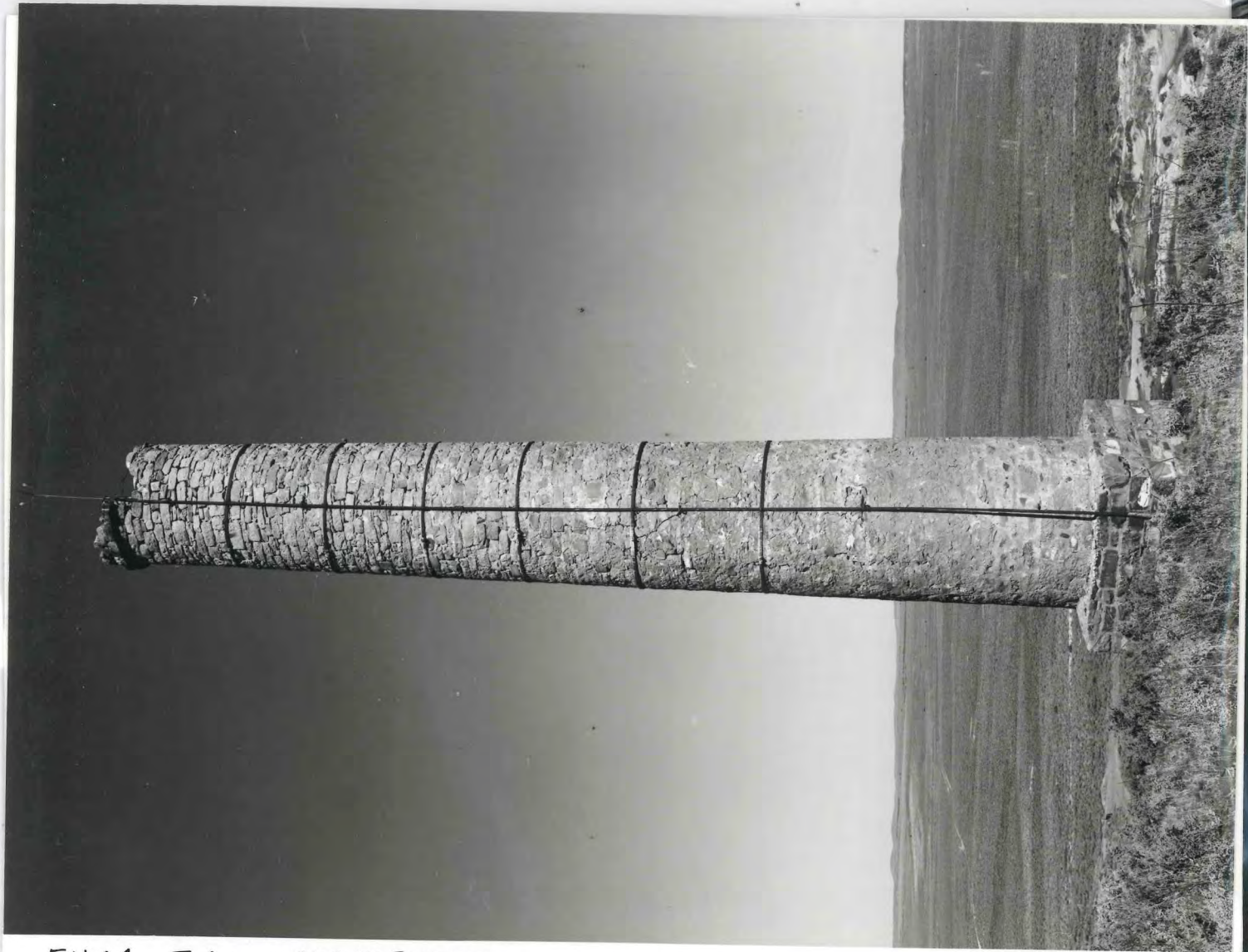




FILM 73
NO 9

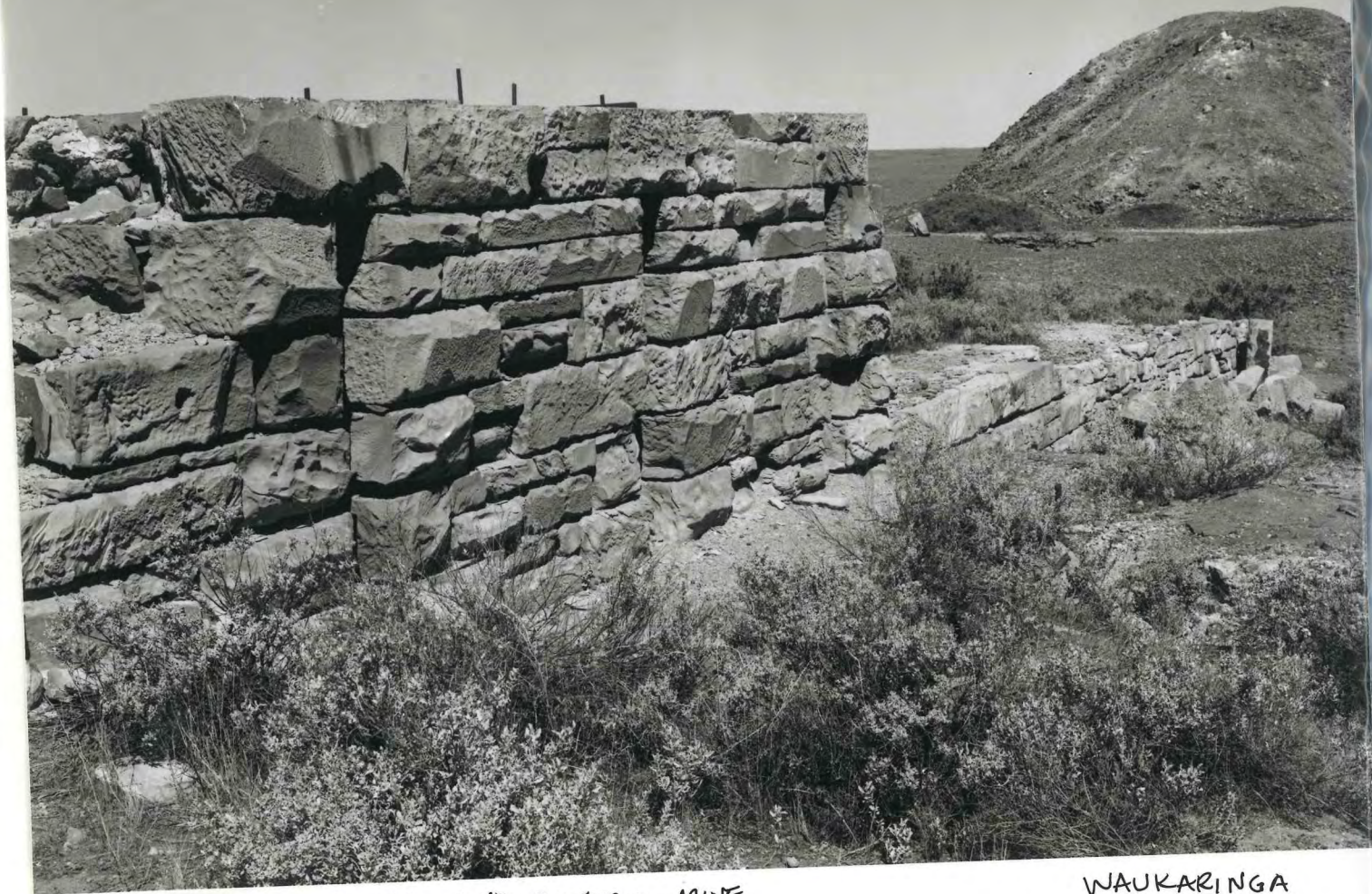
RELIC, ALMA AND VICTORIA MINE
6832-10316

WAUKARINGA
7-3-79



FILM 74 WEST ELEVATION, ALMA AND
NO 5 VICTORIA MINE CHIMNEY 6832-10316

WAIKARINGA
7-3-79



FILM 73
NO 3

ALMA AND VICTORIA MINE

WAIKARINGA
7-3-79



FILM 820
N° 627

VAUKARINNA MINE

6832.10316

May '83
Lohman



Film 820
No 2

Waukaninna Mine

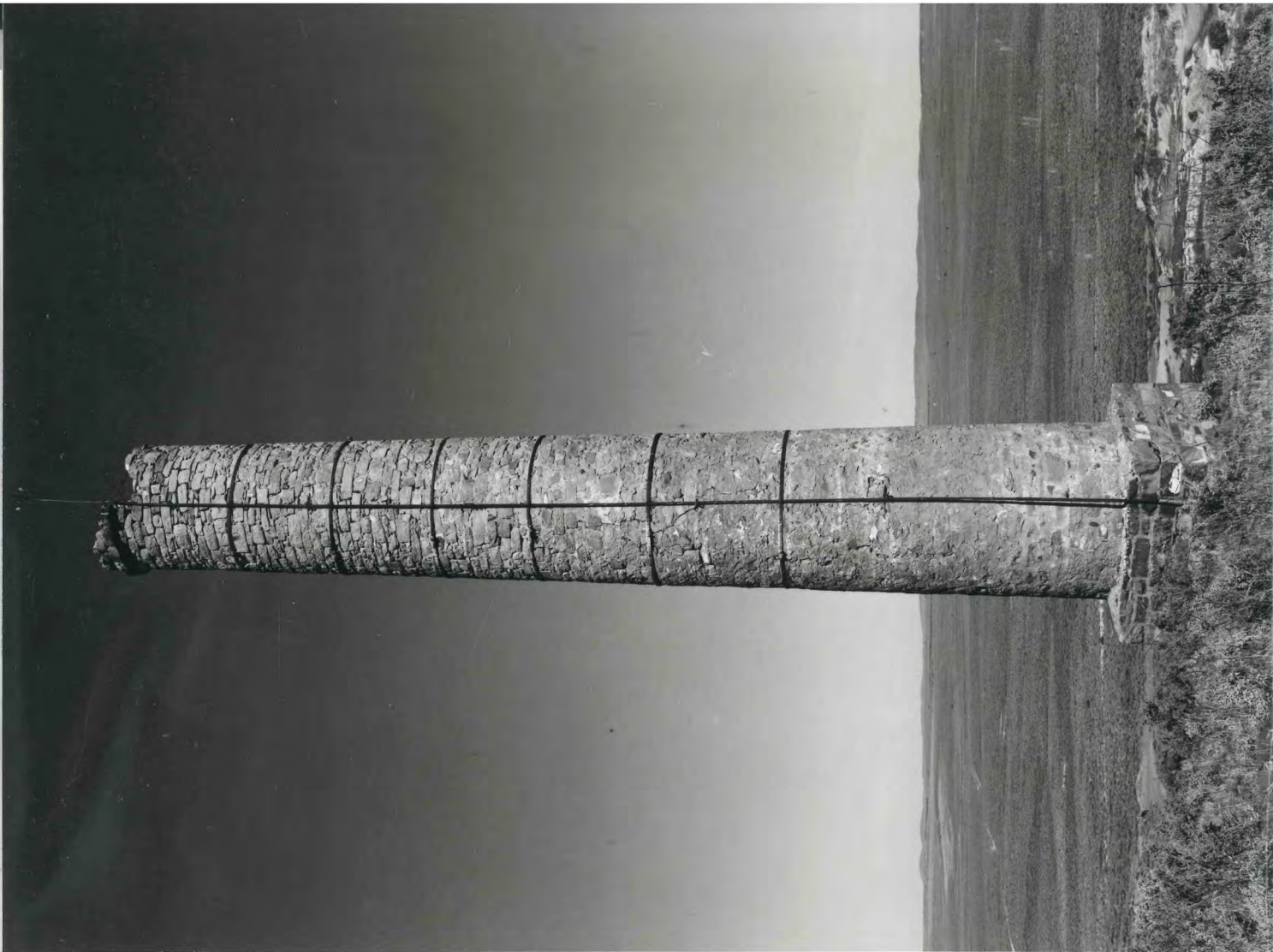
May '83
Latham



Film 820
Nº 324

NAUKARINNA MINE

May '83
Lohmar



FILM 74 WEST ELEVATION ALMA AND
NO 5 VICTORIA MINE CHIMNEY

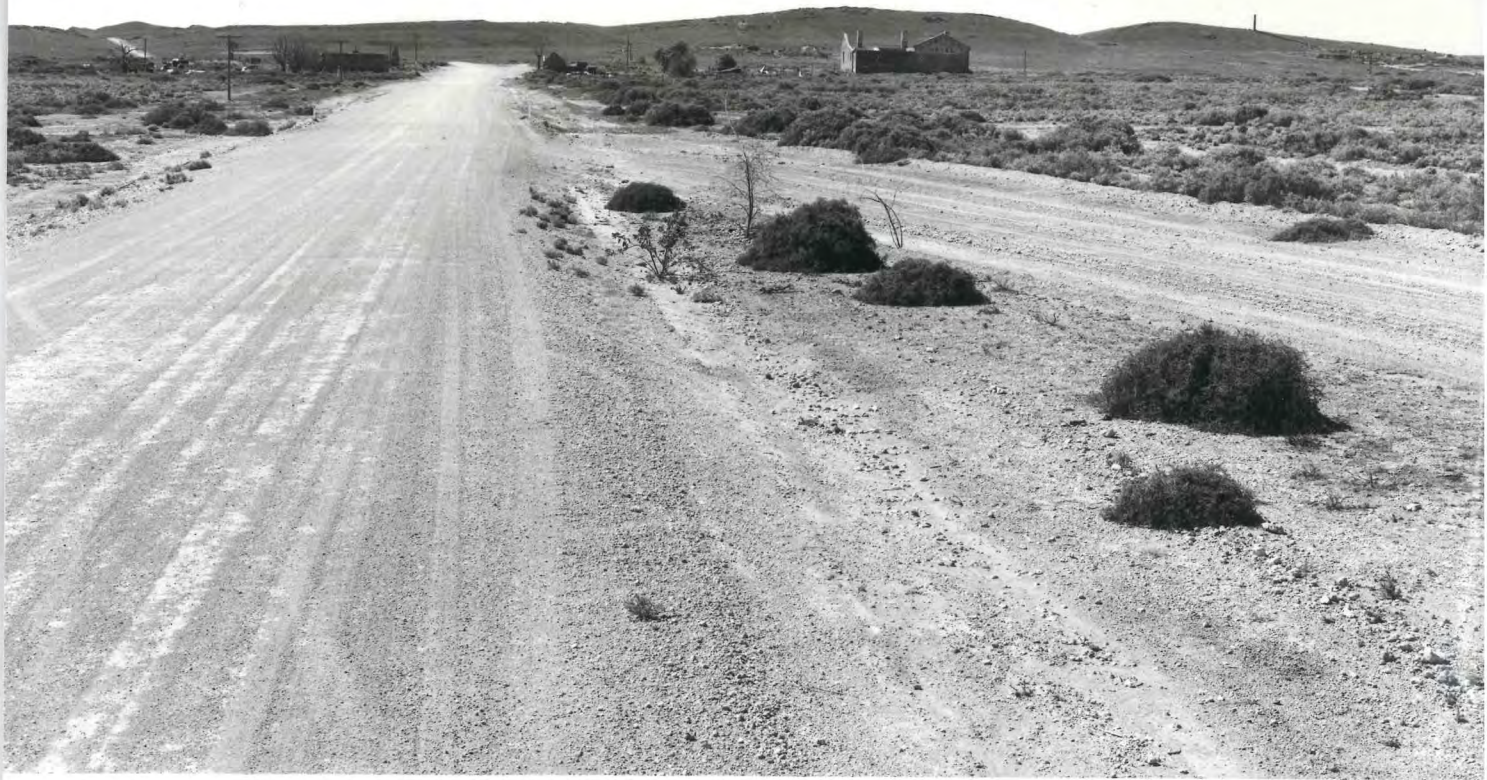
WAUKARINGA
7-3-79



FILM 74
NO 6

ALMA AND VICTORIA MINE VIEW FROM
CHIMNEY

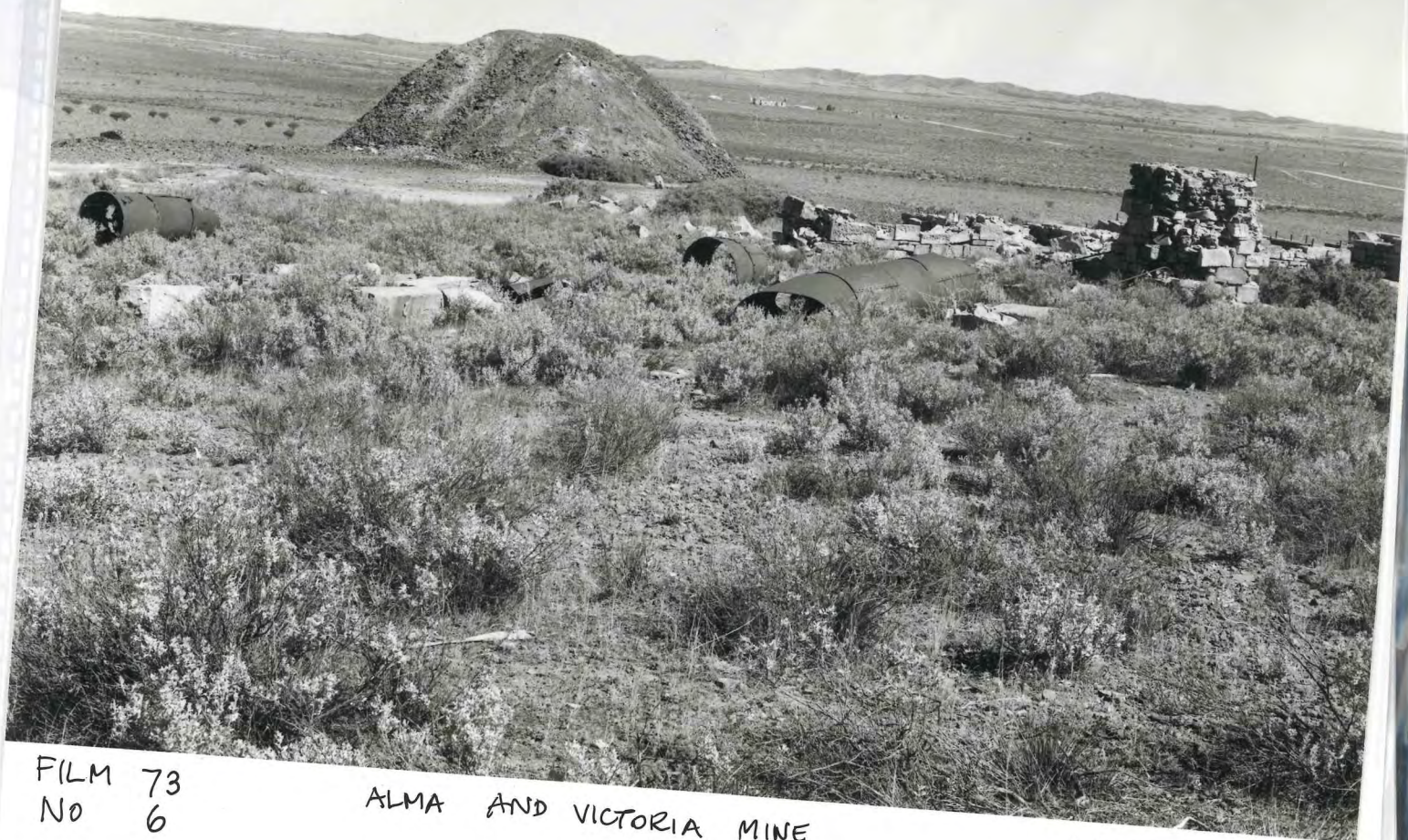
WAUKARINGA
7-3-79



FILM 73
NO 1

VIEW OF WAUKARINGA FROM SOUTH WITH
ALMA AND VICTORIA MINE ON HILLSIDE

WAUKARINGA
7-3-79



FILM 73
No 6

ALMA AND VICTORIA MINE

WAUKARINGA
7-3-79



FILM 74 VIEW SOUTH DOWN DRAUGHT
NO 7 TUNNEL, ALMA AND VICTORIA MINE

WAUKARINGA
7-3-79



FILM 74
NO 2

ALMA AND VICTORIA MINE CHIMNEY
AND RUINS

NAUKARINGA
7-3-79