

Current: POST OFFICE

Historical:

ITEM NUMBER

43

DATE

HERITAGE SIGNIFICANCE:

Built 1866-67 - tender of Pett & Grey (£2395) accepted 30 June 1866, foundation stone laid 8 August 1866, opened for business 9 September 1867.

Upon completion, post office and telegraph services transferred from telegraph station. (Tenders called for alterations 8 April 1871 to accommodate the combined services). Used as principal Gawler Post Office until new premises opened in Tod Street in 1973. Now used as Australia Post Offices (1981).

Clock tower built initially but clock not installed until February 1889 (made by Wendts of Adelaide). Further alterations 1915.

Bluestone with cutstone blockings and surrounds, with an iron roof. Random coursed stone with stone quoins. Openings are segmental or semi-circular and with keystone. Iron roof, clock tower and stone string course.

Sandstone quoins

LOCATION

Street No:
Allotment: Pt.202
Section:
Hundred:
Street: Murray
Town:
LGA:
Postcode:
State Hist.Pres.
Region:

HISTORICAL THEME

Theme: Transport and Communication
Subtheme: Post Offices

HISTORICAL PERIOD

State:
Study Area: 1849-70

TYPE OF ITEM

LAND Natural Feature
Historical Site
Garden

BUILDING Individual
Group

STRUCTURE Complete
Relic

☐
☐
☐
☒
☒
☐
☐

REFERENCES:

Written: Loyau 62-3; Coombe 164, 381-88; Ellis 101;
National Trust 126; Bunyip 1 February 1973 p.5.

Vocal:

Archival Photographs:

RECOMMENDATION:

PHOTOGRAPH

Film No: Negative No:
Direction of view:



STATUS

Register of State
Heritage Items
On Register
Interim List
Nominated
National Estate ✓
National Trust ✓ 126
R.A.I.A.
Civic Trust
N.P. & W.L.S.
Council
Australian Heritage
Engin. Record
Other

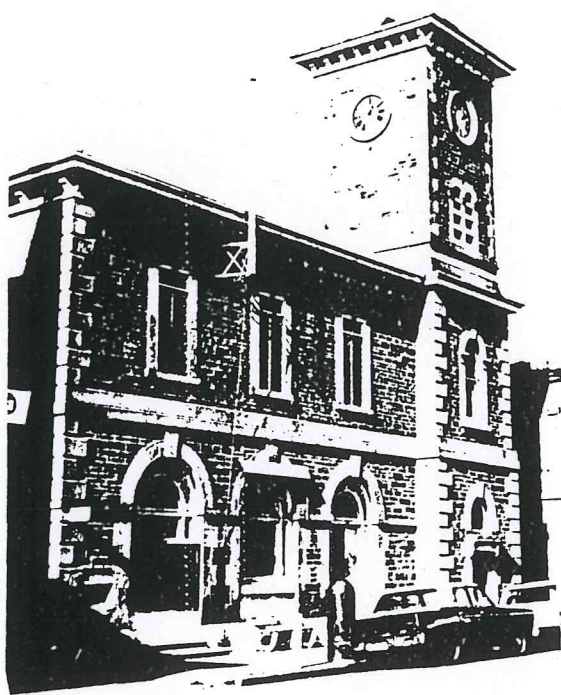
☒
☐
☐

MAP

Scale:
Source:

PREPARED BY:

DATE:



GR - GAWLER POST OFFICE
MURRAY STREET

Gawler

Stone building. Galvanised iron roof. Built 1866. Original Post Office opened 1857.

2 storey building with clock tower. No setback from Murray Street. Visually dominant building. Good condition.

Civic and shopping locality. Old telegraph station adjacent. Civic focus of town. Murray Street traffic heavy.

Important institutional building. Historic associations with several buildings in locality. Threat to preservation minimal.

Recommendations

Historic precinct should be created about this civic focus.

GRADE 1

