

GILLES STREET SCHOOL
111 Gilles Street

This School, erected in 1899, is associated with the development of the public education system in general and the provision of education for residents of the City. Thus, it is identified with the earlier residential nature of this part of the City representing one of the major services required by those residents. It is historically significant because of this association.

This building with prominent gables, and roof form is similar to the form of model schools the construction of which was provided for by the Education Act of 1875. The building is distinctive, however, due to its use of loadbearing brick walls rather than the bluestone masonry more commonly found in the 1880s. The style of the building is aptly abstracted from aspects of the Gothic revival (or at least an Arts and Crafts version of it) and continues the architectural idiom of earlier Model Schools and their Gothic inspired Educational or Institutional overtones. This building is notable for its high quality brickwork and bevel edged sandstone dressings. The gables with well finished moulded brick detailing are reminiscent of "Tudor" half timberwork.

The environmental significance of this item is high. In form and detail it contrasts with nearby development, but it is comparable in scale and setback. It is a positive element in the streetscape, enhanced by the associated landscaping.

The essential integrity of the item appears to be high.

D.M.S.
25/11/82
5:P2A/22

CITY OF ADELAIDE HERITAGE STUDY		ASSESSMENT SUMMARY SHEET 1/1		A1 FORM/BUILDING No. 21/2207.1		CORPORATION USE ONLY				
A2 CURRENT NAME OF ITEM Gilles Street School		A3 ADDRESS/LOCATION OF ITEM 111 Gilles Street			A4 P.T.A. 644	A5 ASSESSMENT NO.				
B1 CURRENT OWNER Minister of Education		B2 PREDOMINANT USE Education				A6 NATIONAL MAP GRID CO-ORDINATES				
C1 FORMER NAME(S) OF ITEM -	C2 FORMER OWNER(S) -	C3 FORMER USE(S) -			A7 PRECINCT R22 Hurtle Square					
D1 HISTORICAL THEME(S) Social Life - Primary Education				G1 INVENTORY GRADING B		A8 DEVELOPMENT ZONE R22.2				
E1 HISTORICAL PERIOD(S) 1885-1913 - Depression and Social Change				H1 LISTING RE- COMMENDED Yes		A9 FURTHER VIABILITY STUDY REQUIRED				
F1 VERIFIED DATE(S) Plans dated 12/6/1899 - Foundation Stone laid 4/9/1899										
EVALUATION COMPONENTS		COMMENT			GRADING					
HISTORY (J1-J3)					E	VG	G	F/p	NA	
J1 PERSON/GROUP	Built for Education Department.						*			
J2 EVENT									*	
J3 CONTEXT	Associated with history of public education in South Australia and reflects residential character of this region of Adelaide				*					
DESIGN (K1-K6)										
K1 DESIGNER	Government Architect						*			
K2 CONTRACTOR	F. Fricker						*			
K3 STYLE	In the form of Model school of the day, the educational association alluded to by Neo-Gothic overtones.						*			
K4 DESIGN	Reminiscent of earlier State Model schools, this building is important for its symmetrical composition and high quality, especially brickwork and joinery.						*			
K5 CONSTRUCTION	Loadbearing brick in Flemish bond with sandstone dressings.						*			
K6 INTERIOR	No access gained.									?
INTEGRITY (L1-L2)										
L1 ALTERATIONS	No major alterations are apparent.						*			
L2 CONDITION	Item appears to be in very good condition.						*			
ENVIRONMENT (M1-M2)										
M1 STREETScape/ LANDSCAPE	Because of its form and detailing, building contrasts with nearby development, though is comparable in scale. It is an important element in the streetscape, enhanced by the associated landscaping.						*			
M2 LANDMARK	Not a landmark feature.							*		
N1 OTHER COMMENT										
O HERITAGE LISTING STATUS	O1 NATIONAL TRUST -	O2 NATIONALESTATE -	O3 STATE HERITAGE -	O4 OTHER -	O5 LOMHAC LISTING ENDORSEMENT Yes.					



CITY of ADELAIDE HERITAGE STUDY

THE CITY HERITAGE REGISTER — DEFINITION OF ITEMS

ITEM GILLES STREET SCHOOL

BUILDING NO.

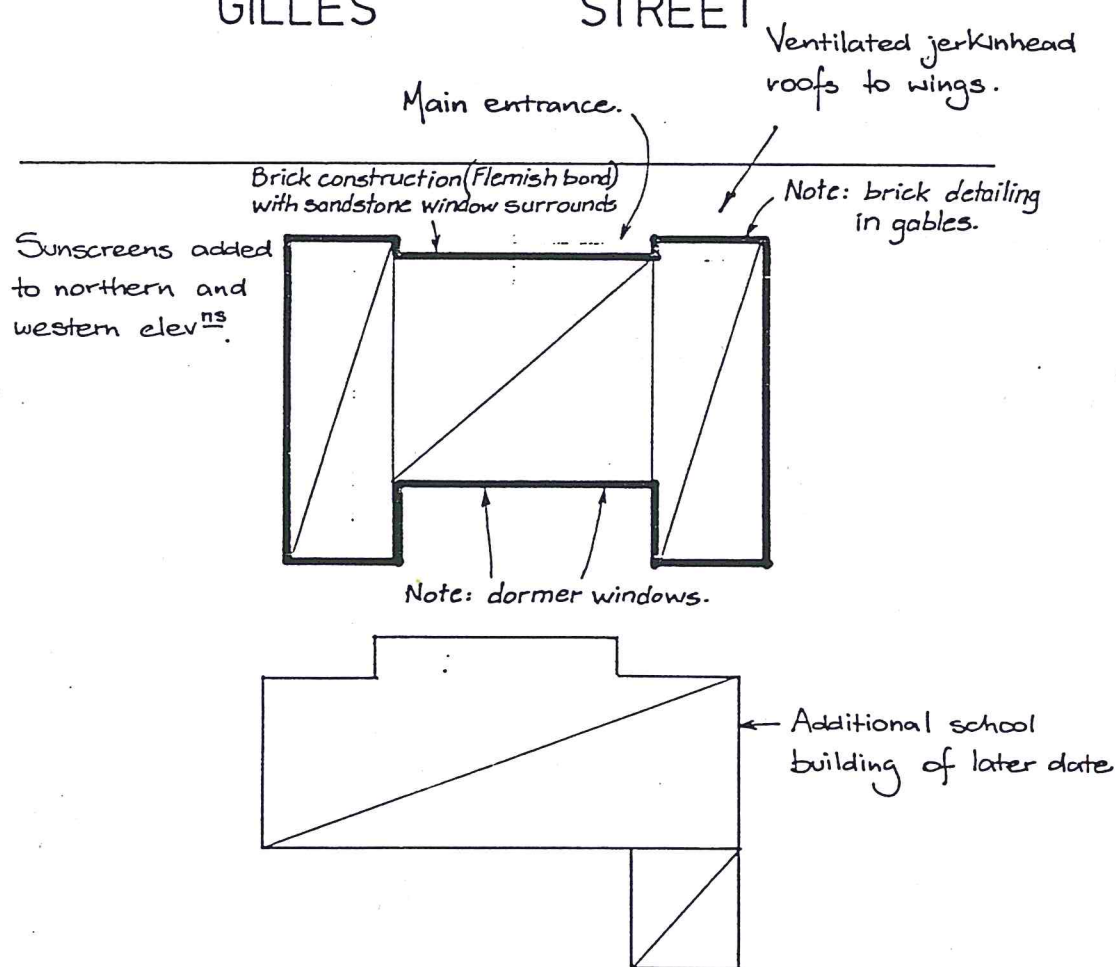
ADDRESS 101-119 Gilles Street

21/2207.1

NUA 0644/1

GILLES

STREET



SCALE (approx) 1 : 480

GILLES STREET PRIMARY SCHOOL

Address: 91 Gilles Street, Adelaide



1904

Gilles Street Primary School provides public school education for children from across the city of Adelaide and around the world. The main building is in the Gothic style and is notable for its high quality brickwork and limestone dressings.

Lady Bonython laid the foundation stone for the school in September 1899, but she did not make a speech because ladies did not shout in the days before loudspeakers. On Monday, 14th May 1900 Gilles Street Public School opened to serve the local community in the south-east corner of Adelaide. The school was named after Osmond Gilles, an early treasurer of the colony of South Australia. By July there were 588 students in a building designed for 500. Overcrowding continued to be a problem, so a new infant building was opened in 1919 followed by an extra primary school building in 1926. In 1918 the Glover Playground in the South Parklands was opened and was used by the school for 'open air exercises'.

From 1920 until 1961, there were two separate schools – the Gilles Street Practising School and the Gilles Street Infant Practising School. Both had an important role in teacher training as practising schools for student-teachers. During this time other organisations also used the buildings, such as the Correspondence School, Girls' Special Classes, the Deaf Blind Unit, the Language Centre and the Curriculum Unit.

Today Gilles Street Primary School is an international school community with over 350 students coming from over 40 different cultural groups.



Gilles Street Primary School 2006



[Home](#) [About](#) [Curriculum](#) [Library](#) [Student Zone](#) [Contact](#)

GILLES STREET PRIMARY SCHOOL

ABOUT US
Profile

Location

History

Facilities

OSHC

Procedures



HISTORY

On Monday, 14th May 1900 Gilles Street Public School opened to serve the local community in the south-east corner of Adelaide. It was named after Osmond Gilles, an early treasurer of the colony of South Australia. When the inspectors visited in July there were 588 students enrolled, this in a school designed for 500. Overcrowding continued to be a problem, so a new infant building was opened in 1919 followed by an extra primary school building in 1926. In 1918 the Glover Playground in the South Parklands was opened and was used by the school for 'open air exercises'.



In the first 30 years, the top class contained girls and boys who, these days, would be secondary school students. There were also students for whom this would be their only school, as many students finished their education at the end of primary school.

[Home](#) [About](#) [Curriculum](#) [Library](#) [Student Zone](#) [Contact](#)

GILLES STREET PRIMARY SCHOOL

[ABOUT US](#)
[Profile](#)[Location](#)[History](#)[Facilities](#)[OSHC](#)[Procedures](#)

HISTORY

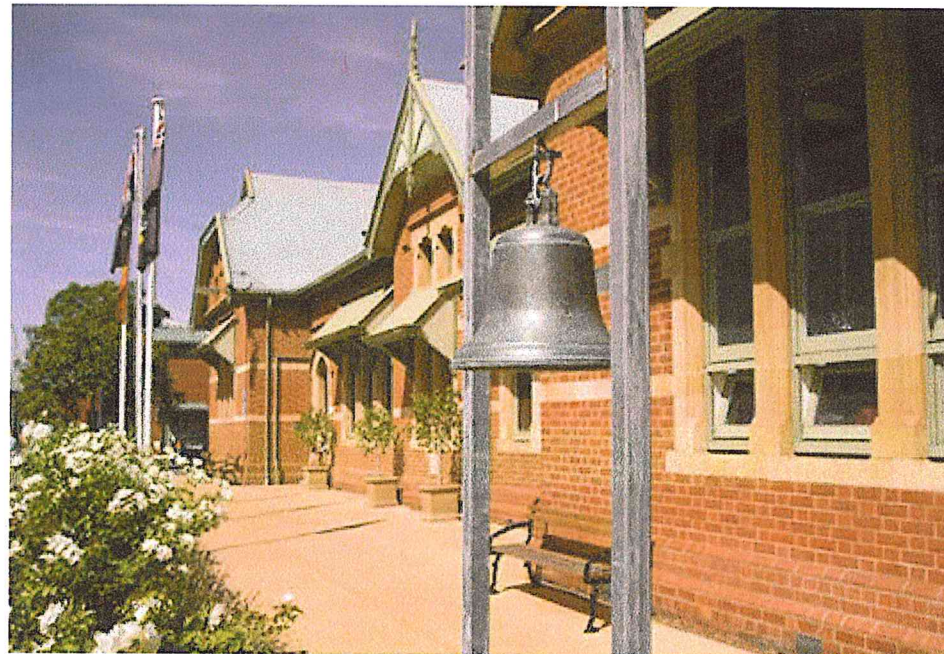
On Monday, 14th May 1900 Gilles Street Public School opened to serve the local community in the south-east corner of Adelaide. It was named after Osmond Gilles, an early treasurer of the colony of South Australia. When the inspectors visited in July there were 588 students enrolled, this in a school designed for 500. Overcrowding continued to be a problem, so a new infant building was opened in 1919 followed by an extra primary school building in 1926. In 1918 the Glover Playground in the South Parklands was opened and was used by the school for 'open air exercises'.



In the first 30 years, the top class contained girls and boys who, these days, would be secondary school students. There were also students for whom this would be their only school, as many students finished their education at the end of primary school.

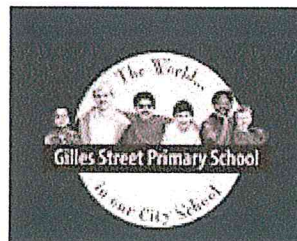
In 2004 Sturt Street re-opened as the Sturt Street Community School educating children from birth to 8 years of age.

Today Gilles Street Primary School has two components – the mainstream R-7 school and the New Arrivals Program – and is an international school community with students coming from over 40 different cultural groups.



[Home](#) | [About](#) | [Curriculum](#) | [Library](#) | [Student Zone](#) | [Contact](#)
 Last updated: 02-Aug-2004 | Copyright © 2004 | Website Developed by [Jacob Gates](#)

The world in our City School



Contact Information
 Tel: +61 8 8223 5184
 Email: admin@gillesstps.sa.edu.au
 Web URL: <http://www.gillesstps.sa.edu.au>
[Disclaimer](#) | [Copyright](#) | [Privacy](#)



Department of
 Education
 and Children's
 Services



Government
 of South Australia