

2014 State Report Card

Are activities being undertaken to conserve our threatened plants and animals?

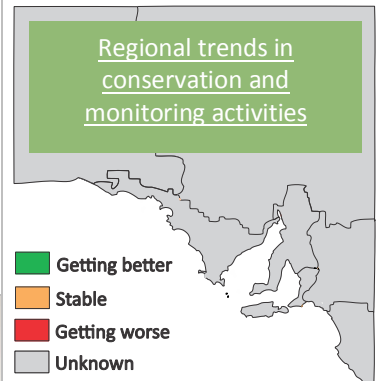
The survival and health of South Australia's native plants, animals and ecosystems are crucial to our economic and social wellbeing.

Unfortunately, some of our plant and animal species are threatened with extinction due to the legacy of past actions, combined with new and ongoing threats. An [increasing](#) number of species in South Australia are nationally listed as threatened with extinction or extinct.

Acting to protect threatened species helps to preserve the ecosystems on which we all rely. Threatened species require targeted conservation activities such as reintroduction programs, habitat restoration and protection, and control of threats such as weeds and pest animals. Monitoring programs help to assess whether the prospects of our threatened species are improving and ensure that our conservation activities are effective.



Regional trends in conservation and monitoring activities



State target

Improve the management of species and ecological communities

Trend

Unknown

This is the first time this information has been collated; a trend will be available in future versions of this report card

Natural resource managers prioritise a threatened species for conservation and monitoring based on its conservation status, vulnerability to threats of extinction and funding availability. To get the best returns from our conservation activities, natural resource managers control threats and improve habitats to benefit multiple threatened or declining species.

Improving the prospects of our threatened species is difficult. It will take substantial effort and conservation investments over many years to prevent their further extinction.

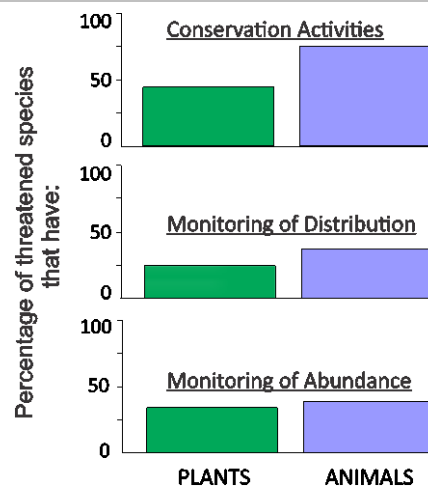
Where we are at (2013)

Fair

More conservation activities and monitoring programs are required

Natural resource managers undertake conservation activities for 46 per cent of our threatened plants and 75 per cent of our threatened animals (see graph on right). Activities are undertaken in all of the NRM regions where these plants and animals have been recorded.

Natural resource managers monitor the distribution and abundance of around 29 per cent of our threatened plants and 38 per cent of our threatened animals (see graph on right). For these plants and animals, monitoring programs are in place in all NRM regions where they have been recorded.



Reliability of information



Excellent

Further information:

[Technical information for this report card](#)

[Department of the Environment - threatened species and ecological communities](#)

