

# 2014 Regional Snapshot

## How many of our ecological communities are extinct or threatened with extinction?

Ecological communities are groups of plants and animals that interact in a unique habitat. They provide food and shelter for native species, store carbon, and filter the air, water and soil on which we all depend. They support tourism, agriculture and fisheries industries, and they have cultural significance for all Australians.

Some ecological communities are considered threatened under national legislation. The number of ecological communities listed indicates how many communities require urgent conservation.

Land-based ecological communities are threatened by land clearance, habitat degradation and fragmentation, changes to water flows, weeds and pest animals, inappropriate fire regimes, poor grazing and farming practices, and pollution.

The health of our ecological communities relies on the [management](#) of these threats.



Trend in the number of ecological communities listed as threatened



State target

Improve the management of species and ecological communities

### Trend (2009–13)

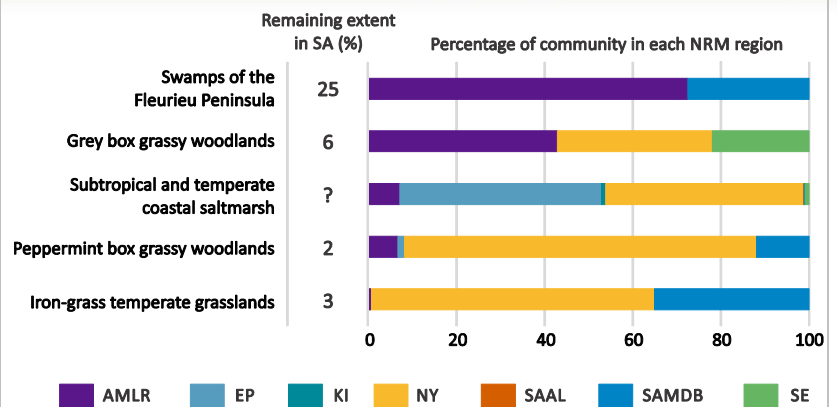
Getting worse

Two ecological communities have been listed as threatened in the last 5 years

Five ecological communities are nationally listed as threatened in the Adelaide and Mount Lofty Ranges NRM region. Two of these have been listed in the last 5 years: grey box grassy woodlands (endangered category) and subtropical and temperate coastal saltmarsh (vulnerable category).

The threatened ecological communities that occur in this NRM region now cover between 2 and 25 per cent of their former extent (see graph on right). About 8 per cent of what is left is in a [protected area](#).

This NRM region contains 80 per cent of the Swamps of the Fleurieu Peninsula community and 40 per cent of the Grey box grassy woodlands (graph on right).



### Where we are at (2013)

Poor

Five ecological communities are nationally threatened in the NRM region

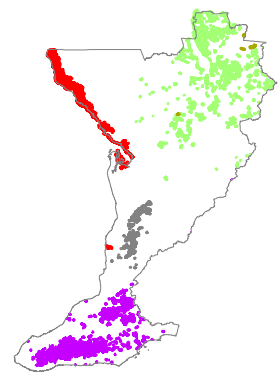
Five ecological communities that occur in this NRM region are listed as nationally threatened (see map on right).

*Posidonia* seagrass meadows are being assessed as a threatened ecological community under national legislation. A further 22 other ecological communities in the NRM region are being assessed to determine their conservation status.

More information about the conservation activities and monitoring occurring for threatened ecological communities can be found [here](#).

- Swamps of the Fleurieu Peninsula
- Grey box grassy woodlands
- Coastal saltmarsh
- Peppermint box grassy woodlands
- Iron-grass temperate grasslands

Note: mapping of threatened ecological communities is indicative but not accurate of current extent



### Reliability of information



Excellent

### Further information:

[Technical information for this report](#), [Department of the Environment – threatened species and ecological communities](#)