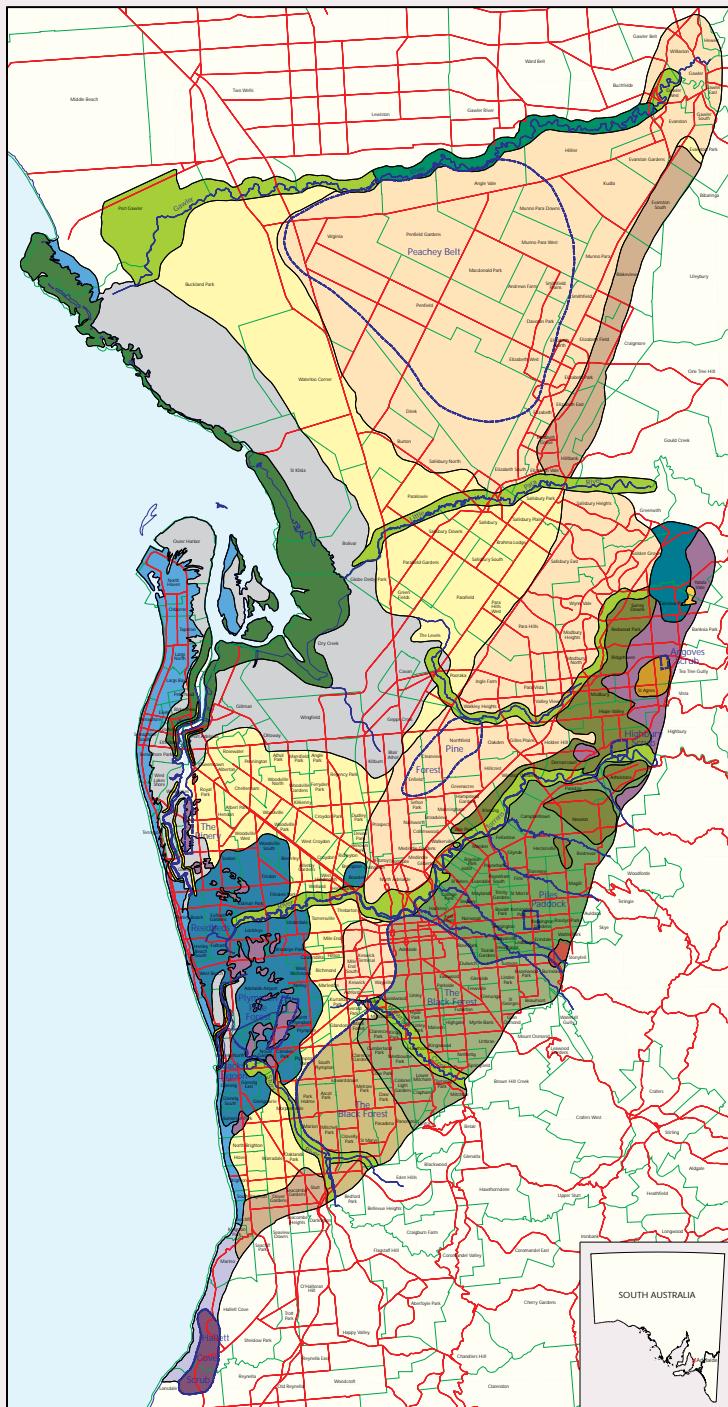


# FORESTS AND WOODLANDS OF THE ADELAIDE PLAINS IN 1836

## A NATIVE VEGETATION PLANTING GUIDE

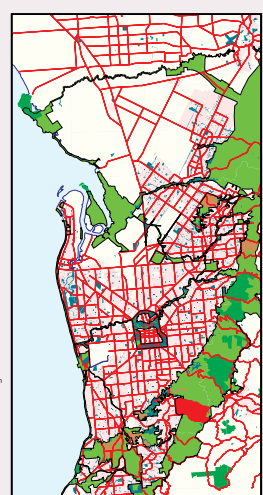


### How to use this Planting Guide:

This poster has been designed as a native planting guide. Looking at the map, locate your suburb's colour and match to the coloured, numbered boxes below. This identifies the plant group appropriate to your area. On the back of this poster find your suburb's number and colour to identify those plants indigenous to your area. These have been listed under layer headings - i.e. trees, shrubs, ground cover. Dots down the list indicate the presence of species in each group.

- The blue dashed line indicate historic localities. These were often based on distinctive vegetation areas that existed at the time.
- OPEN FOREST**
- 1 *Eucalyptus kucuytoni* (SA Blue Gum)  
*Eucalyptus camaldulensis* (River Red Gum) Open Forest  
Soil Description: Red brown clay to red brown sandy clay  
Landscape Description: Footslopes
  - 2 *Eucalyptus camaldulensis* (River Red Gum)  
*Eucalyptus largiflores* (River Gum) Open Forest  
Soil Description: Alluvial soils  
Landscape Description: Watercourse
- WOODLANDS**
- 3 *Eucalyptus kucuytoni* (SA Blue Gum) Woodland  
*Allocasuarina verticillata* (Drooping Sheak)  
Soil Description: Black sand and brown earths, terra rossa  
Landscape Description: Footslopes
  - 4 *Eucalyptus camaldulensis* (River Red Gum)  
*Eucalyptus kucuytoni* (SA Blue Gum) Woodland  
Soil Description: Alluvial soils  
Landscape Description: Watercourse
  - 5 *Eucalyptus microcarpa* (Grey Box)  
*Eucalyptus camaldulensis* (River Red Gum) Woodland  
Soil Description: Red brown earths  
Landscape Description: Footslopes
  - 6 *Eucalyptus microcarpa* (Grey Box)  
*Eucalyptus kucuytoni* (SA Blue Gum) Woodland  
Soil Description: Heavy red brown clay to red brown clay  
Landscape Description: Footslopes
  - 7 *Eucalyptus porosa* (Mallee Box) Woodland  
Soil Description: Brown solonch soil, terra rossa, black earth, red brown  
Landscape Description: Plains
  - 8 *Callitris prestelii* (Southern Cypress Pine)  
*Allocasuarina verticillata* (Drooping Sheak) Woodland  
Soil Description: Grey sand and red mottled sandy clay  
Landscape Description: Footslopes
  - 9 *Eucalyptus fasciculata* (Pink Gum)  
*Eucalyptus kucuytoni* (SA Blue Gum)  
*Allocasuarina verticillata* (Drooping Sheak) Low woodland  
Soil Description: Brown solonch soil  
Landscape Description: Footslopes
  - 10 *Eucalyptus paniculata* (Long-hair Box)  
*Eucalyptus fasciculata* (Pink Gum) Low woodland  
Soil Description: Loamy sand over medium clay  
Landscape Description: Footslopes
  - 11 *Eucalyptus kucuytoni* (SA Blue Gum)  
*Callitris prestelii* (Southern Cypress Pine)  
*Eucalyptus microcarpa* (Grey Box) Low woodland  
Soil Description: Grey sand over yellow mottled clay  
Landscape Description: Footslopes
  - 12 *Eucalyptus porosa* (Box Mallee)  
*Allocasuarina verticillata* (Drooping Sheak)  
*Allocasuarina verticillata* (Drooping Sheak)  
Soil Description: Old dune sand (coarse), heavy red brown clay soils  
Landscape Description: Footslopes and swamp flats
  - 13 *Eucalyptus porosa* (Box Mallee)  
*Allocasuarina verticillata* (Drooping Sheak)  
*Allocasuarina verticillata* (Drooping Sheak)  
Soil Description: Terra rossa  
Landscape Description: Plains
  - 14 *Callitris prestelii* (Southern Cypress Pine)  
*Allocasuarina verticillata* (Drooping Sheak)  
*Allocasuarina verticillata* (Drooping Sheak)  
Soil Description: Old dune sand (coarse), heavy red brown clay soils  
Landscape Description: Footslopes and swamp flats
  - 15 *Mitrasacme halimiflorum* spp. *halimiflorum* (Swamp Paper Bark) Low woodland  
Soil Description: Estuarine mud and sands  
Landscape Description: Watercourse
  - 16 *Avicennia marina* (Mangrove) Low woodland  
Soil Description: Estuarine mud and sands  
Landscape Description: Tidal flats
- SHRUBLANDS/HEATHS**
- 17 *Acacia ligulata* (Umbrella Bush)  
*Acacia acrotricha* (Wearth Wattle)  
*Phoradendron australe* (Common Boob)  
*Phoradendron australe* var. *articulata* Low Shrubland  
Soil Description: Estuarine mud and sands  
Landscape Description: Coastal dunes
  - 18 *Callitris exilis* (Coastal Daisy Bush)  
*Acacia longifolia* var. *sophorae* (Coastal Wattle) Open heath  
Soil Description: Dune sand  
Landscape Description: Coastal dunes
  - 19 *Mixed Halosarcia* spp. (Samphire)  
*Sarcocornia* spp. (Samphire)  
*Sarcocornia* spp. (Samphire) Low shrubland  
Soil Description: Estuarine mud and sands  
Landscape Description: Tidal flats
- REEDBEDS/SEDGELANDS**
- 20 *Mixed Amphibolobaccha florulenta* (Lignum) Low shrubland  
*Phragmites australis* (Common Reed)  
*Phragmites* spp. (Reed Wood)  
*Ruppia mucronata* var. *aruncum* (Water-ribbons) Reedbeds  
*Ruppia mucronata* spp. (Reed Wood)  
Soil Description: Alluvial soil  
Landscape Description: Watercourse, swamps and lagoons
- GRASSLANDS**
- 21 *Stipa* spp. (Spear Grass)  
*Dianthus* spp. (Waltley Grass) Grassland  
Soil Description: Red brown earths (pod brown clay)  
Landscape Description: Plains

### OPEN SPACE AND RESERVE SYSTEM



### Forests and Woodlands of the Adelaide Plains in 1836

This map shows the native vegetation of the Adelaide Plains as it probably was in 1836 at the time of European settlement.

Very little of the plant cover shown here still remains in these areas today. This map has been recreated using historic botanical records, and through the examination of small pockets of remaining vegetation throughout the Adelaide Plains area. Taken from the book *Pre-European Vegetation of Adelaide: A Survey from the Coaster River to Flaxton Cove* by Darnell Kraehenbueh and published by the South Australian Nature Conservation Society, the map has been adapted here for use as a planting guide.

The boundaries shown on the map are approximate and provide an indication of where different plant groups are most likely to have occurred. In reality these boundaries would probably not have been as distinct, as areas such as forests, woodlands and grasslands often grade into each other. Plant groups are generally correlated to soil types, topography or landscape, and water availability.

**Soils**  
The soils given for each group have been taken from the map *Soils of the Adelaide Plains* produced by the Department of Mines SA in 1972 and are a general description only. The top layer of soils in some areas may have been removed or altered and this is not reflected in the descriptions given here.

Produced by INFORMATION AND DATA ANALYSIS BRANCH  
Planning SA  
Department of Transport, Urban Planning and the Arts  
Map Published September 1997 - revised May 2000  
Photographs Darnell N Kraehenbueh, LMB Heard  
Projection Transverse Mercator  
Datum Geodetic Datum of Australia, 1994

© Copyright Planning SA, Department of Transport, Urban Planning and the Arts 2000. All Rights Reserved. All words and information displayed are subject to Copyright. For the reproduction or publication beyond that permitted by the Copyright Act, Third Party written permission must be sought from the copyright owner.  
Although every effort has been made to ensure the accuracy of the information displayed, the Department, its agents, officers and employees make no representation, either express or implied, that the information displayed is accurate or fit for any purpose and expressly disclaims all liability for loss or damage arising from reliance upon the information displayed.



Group No. 7 *Eucalyptus porosa* (Mallee Box) Folland Park  
Group No. 8 *Callitris prestelii* (Southern Cypress Pine) at Ferguson Park  
Group No. 4 *Eucalyptus camaldulensis* (River Red Gum)  
Group No. 6 *Eucalyptus microcarpa* (Grey Box)  
Group No. 9 *Allocasuarina verticillata* (Drooping Sheak)

