
Urban Heat Mapping Viewer

Version 1.0

Quick Start Guide



Government of South Australia
Department for Environment
and Water

CONTENTS

VIEWER LAYOUT	4
NAVIGATING AROUND THE MAP	5
SELECTING A BASE MAP	5
LAYER LIST PANEL	6
TRANSPARENCY SLIDER	7
IDENTIFY	8
ADDRESS OR LOCATION SEARCH	8
RIGHT CLICK MENU	10

The screenshot shows the 'Urban Heat Mapping Viewer' interface. At the top right is a search bar (1) with the placeholder text 'Find address or location...'. Below the search bar is a toolbar (2, 3, 4) with tabs for 'General Tools', 'Measure Tools', 'Draw Tools', and 'Find Tools'. The toolbar contains icons for 'Full Extent', 'Previous Extent', 'Show Legend', 'Identify Point', 'Print', 'Upload Data', 'Zoom to XY', 'Plot Coordinates', 'Google Street View', 'Share Map via Email', and 'Help'. The left sidebar (5, 6, 7, 13) has a 'Home' tab, a title 'Urban Heat Mapping of Adelaide Metropolitan Area', a description, and buttons for 'View Urban Heat Data', 'Find a Ward', 'Find an LGA', 'Find a Suburb', 'Adapt West', 'Resilient East & City of Salisbury', and 'Resilient South'. It also includes links for 'Contact Urban Heat Mapping Support' and 'Help using the Urban Heat Mapping Viewer'. The main map area (12) displays a heat map of Adelaide with a color scale from green to red. A pop-up window (5) shows 'Selected Feature Attributes' for 'Resilient East & City of Salisbury - Day Heat Map 23rd March 2018' with a 'Surface Temperature: 40.2°C' and a 'Further Information' link. The bottom status bar (9, 10, 11, 8) shows 'Imagery' (9), 'Web Mercator' (10), coordinates 'X 15328011.21 Y -4155425.14', a scale bar (11), and 'Scale 1: 577,791' (8).


<p>1 Address or Location Search: type an address or a location to search on</p>	<p>8 Panel tabs: displays a tab for each open panel. Click the tab to swap between the different panels e.g. Home, Layer List, Results</p>
<p>2 Toolbar tabs: tools are grouped by function. Select the tab to display the required tools</p>	<p>9 Base Maps: lists the base maps you can select from (Aerial Imagery, Topographic or Street)</p>
<p>3 Toolbar: contains the tools that interact with the map or perform a specific function</p>	<p>10 Coordinate display: select the coordinate system to display</p>
<p>4 Toolbar icon: shows or hides the toolbar when you click the icon</p>	<p>11 Scalebar & Map Scale: use the dropdown to zoom quickly between map scales</p>
<p>5 Panel icon: expand, Collapse or hide the information panel using this button</p>	<p>12 Map Tip: Information about the feature pops up in this box when you left click (mouse) on a feature.</p>
<p>6 Zoom buttons: zoom in or out using the + or - buttons</p>	<p>13 Home/Layers Panel: Home Panel provided some quick find tools and useful links. Layer List panel provides list of layers available in the Viewer</p>
<p>7 Bookmark: create or open a bookmark</p>	

Navigating Around the Map

In the Urban Heat Mapping Viewer most navigation can be done using the mouse, but at times you may also use a key press in combination with a mouse click and dragging across the map.

If you're using a touch screen, touch a spot on the map and move your finger to move the map around. Double tap or pinch outwards to zoom in. Pinch inwards to zoom out.

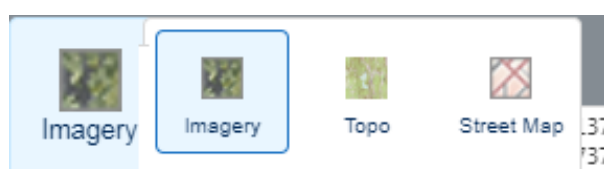
On the desktop map, you can use the following controls:

To...	Do this...
Pan or move the map.	Click and hold the left mouse button and drag the map in any direction.
Move the map left or right.	Press the Left or Right arrow keys on the keyboard.
Move the map up or down	Press the Up or Down arrow keys on the keyboard.
Zoom in or out using the Mouse	Scroll the mouse wheel away from you to zoom in; towards you to zoom out.
Zoom in or out using the Map Tools 	Click the Plus + or Minus - to zoom in or out.
Zoom in to a specific region on the map.	Press SHIFT , hold down the left mouse button and drag a rectangle around the area you want to zoom in to.
Zoom in or out using the keyboard	Press the Plus + key to zoom in. Press the Minus - key to zoom out.

Selecting a base map

The base map menu in the bottom left of the map view lists the base maps available. There are currently 3 base maps you can choose from:

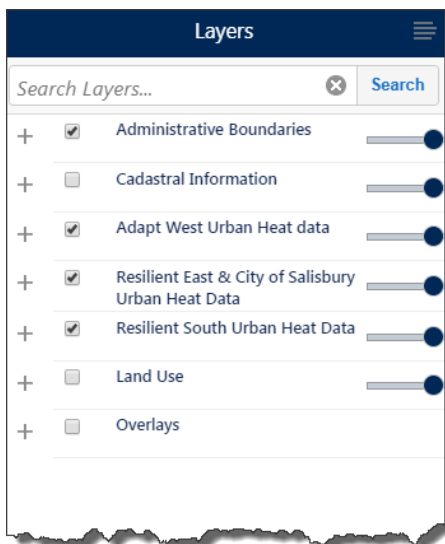
- **Topo** – The Topographic Basemap has been authored to replicate the appearance of a traditional paper-based topographic map. As the basemap is zoomed in additional detail including roads, tracks, towns, vegetation, water features and contours will display to provide the general topographic context of a geographic location.
- **Street Map** - This can be considered a pseudo "Street Directory" type map.
- **Imagery** - Is a tile cache of the South Australian Governments latest aerial photography



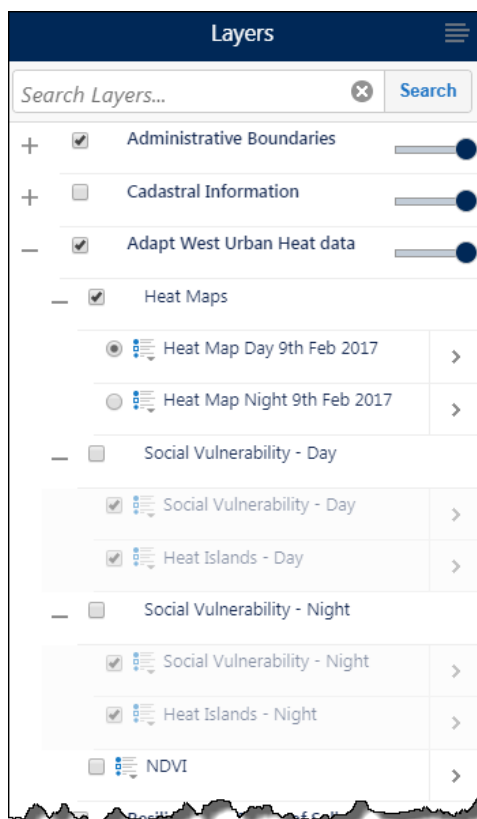
Layer List Panel

The Layer List Panel shows a list of all the layers currently available. From here you can turn layers on and off as desired.

When you first open the Layer List you'll be presented with the top level folders.

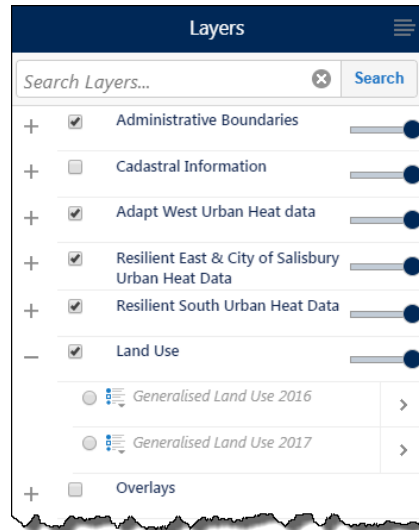


To expand the folder click on the **+** next to the Folder name, and check the box to activate the folder.



To turn a layer on click the check box next to the layer name.

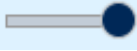
If a layer name is greyed out and italicic, this means that it has a scale dependency. You will be able to “check it on” but it won’t become active until you have zoomed to the appropriate scale.

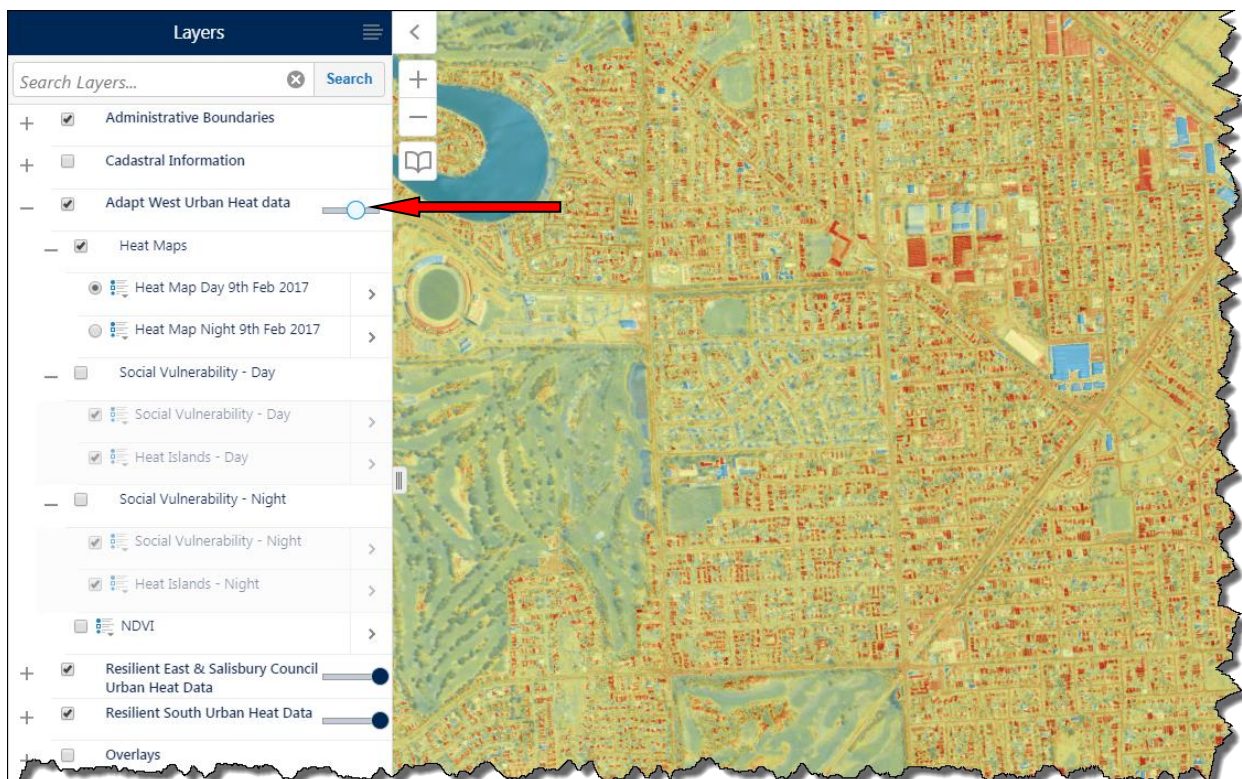


Certain folders within the Viewer have a restriction whereby only one layer in that folder can be activated at a time. This is indicated by a circle check option

Once a layer is activated under these folders, toggle between the layers to see other features. You will need to uncheck the folder itself to turn off the layer.

Transparency Slider

The Transparency Slider  allows you to adjust the transparency of ALL layers under that folder in order to see the base map information underneath



Identify

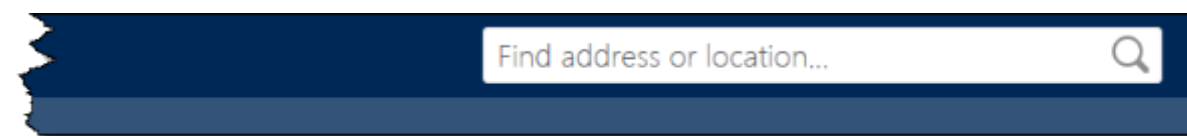
To identify a feature in the Urban Heat Mapping Viewer click the left mouse button to activate Map Tips function.

When you left click on a feature you will be presented with the map tips box showing a brief attribute description of that feature



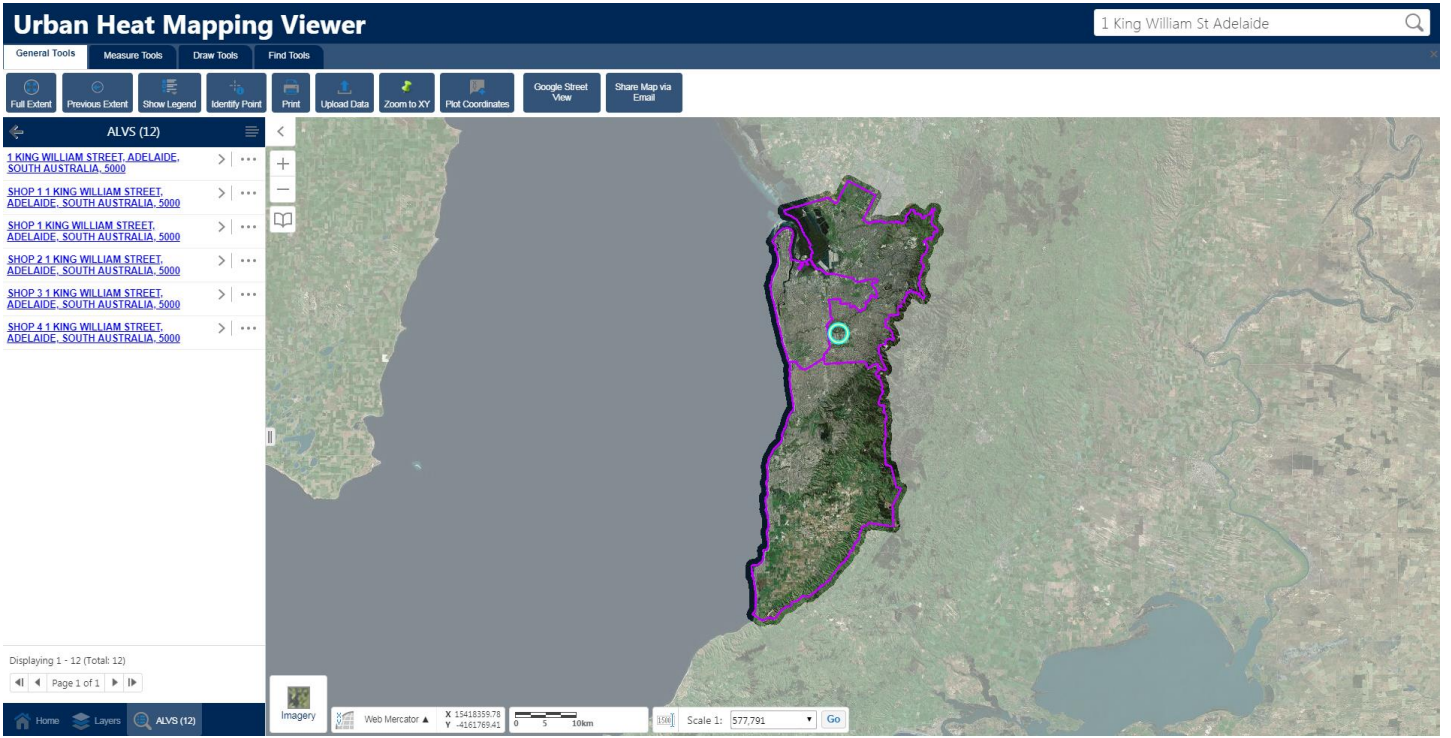
Address or Location Search

The Urban Heat Mapping Viewer uses the Address Validation Service from Location SA to enable you to search for street addresses or gazetted locations within South Australia

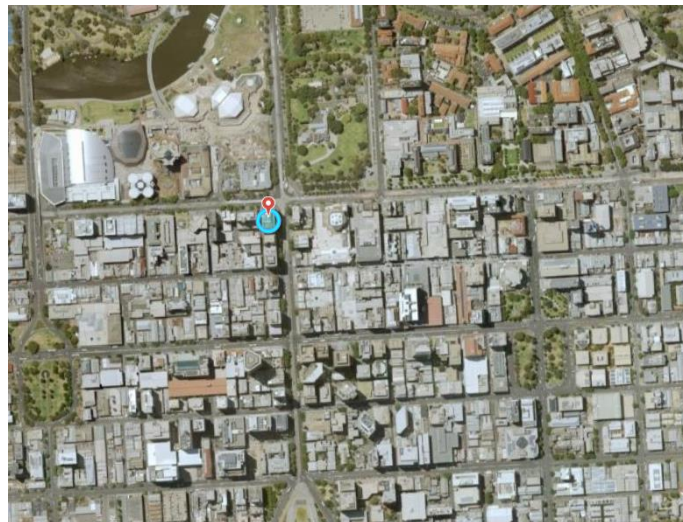


To find a specific address, type the address you wish to find in the Dialog Box type and click on the magnifying glass, or, hit Return on your keyboard.

The closest match results to your query are returned in the left hand side panel.

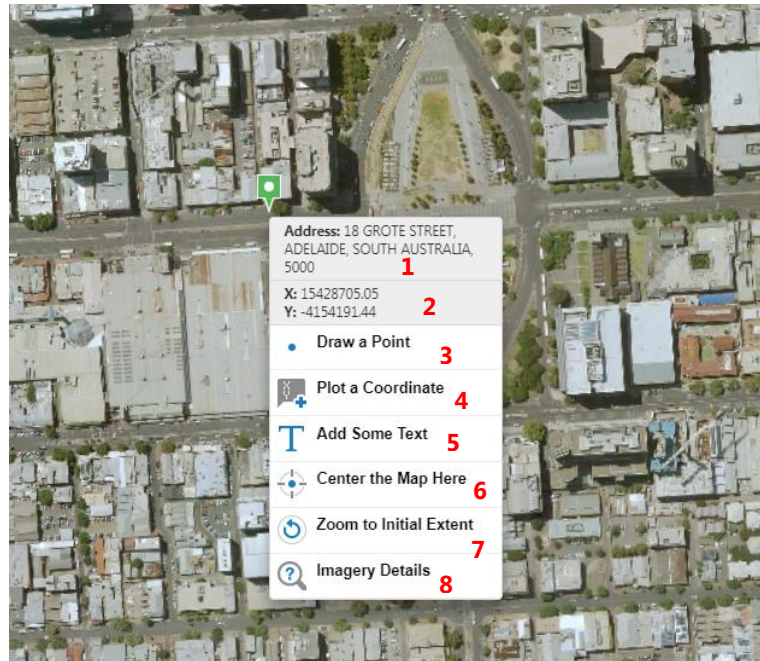


Select the matching result in the Results Panel and the Viewer will zoom to that location.



Right Click Menu

Using the right mouse button at any point on the map, you can find information about that location and perform a number of actions.



1 Address information (where available) at selected location	5 Add some text at that location
2 Coordinates at that location. Change coordinate display by selecting the appropriate coordinate system from the display options at the bottom of the screen	6 Centres the map screen to that location
3 Draw a point on the screen at that location	7 Zooms screen to the initial start-up extent
4 Plot coordinates on the screen for that location	8 Retrieves, where available, imagery information (capture date and resolution) at that location. Note: please ensure that imagery base map is activated



Government of South Australia
Department of Environment,
Water and Natural Resources