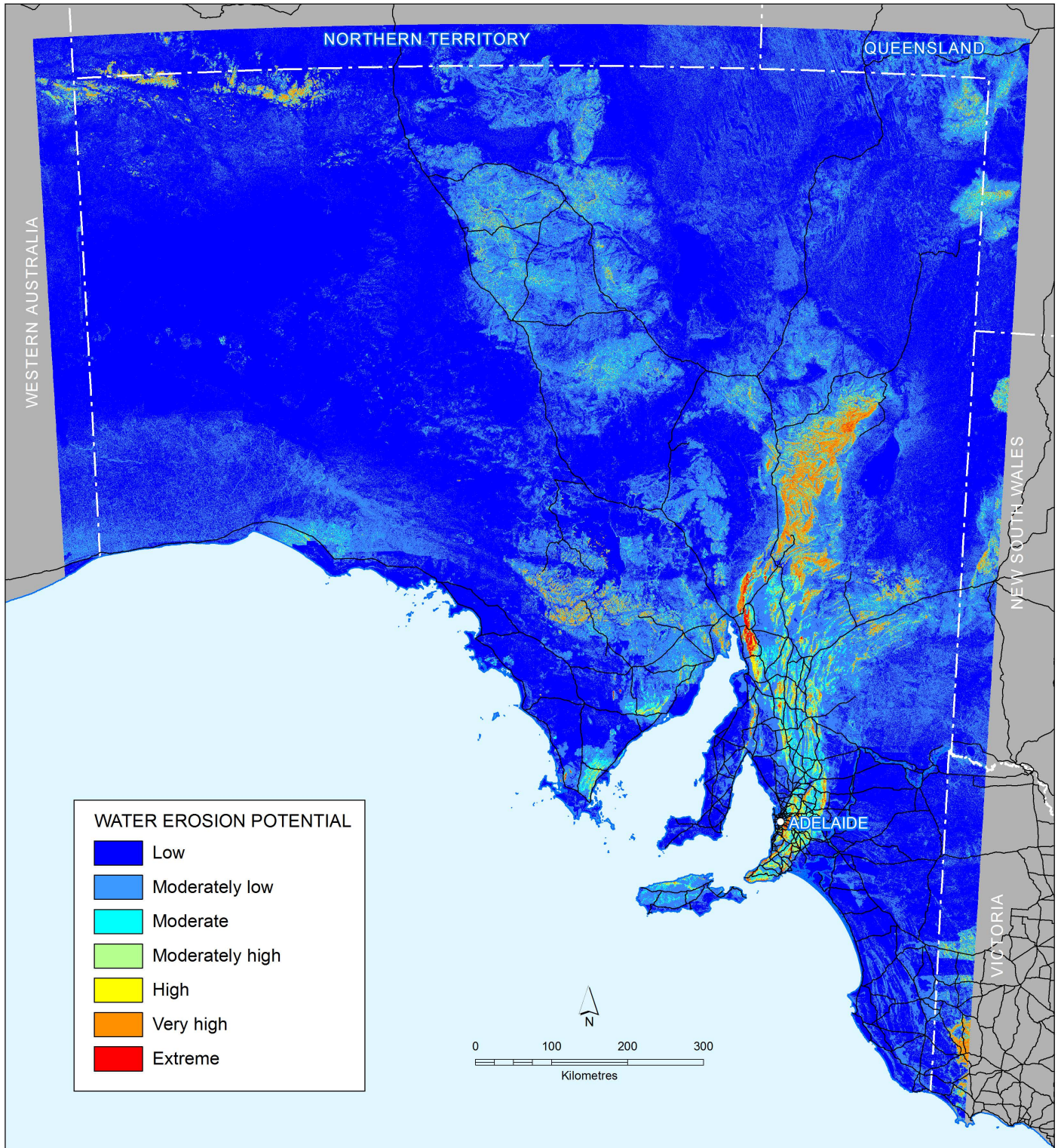


SOUTH AUSTRALIA

# WATER EROSION POTENTIAL

The assessment is based on the potential for sheet and rill erosion, interpreted from terrain and spatial predictions of the inherent characteristics of the land (i.e. in the event that vegetation or other ground cover has been removed)



**Government of South Australia**  
Department of Environment,  
Water and Natural Resources



Licensed under Creative Commons Attribution 4.0 International License  
<http://creativecommons.org/licenses/by/4.0/>

© Crown in right of the State of South Australia  
Department of Environment, Water and Natural Resources 2017

Land assessment: DEWNR Environmental Science Branch  
Map projection: Decimal degrees  
Map datum: GDA94