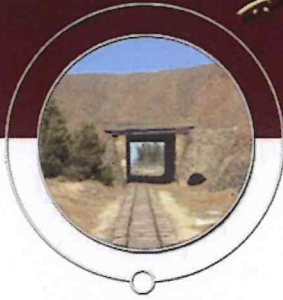


# State Heritage Areas of South Australia



## Burra State Heritage Area Religious Buildings

*State Heritage Places entered in the South Australian Heritage Register*

Of the numerous places within Burra that either are, or have been, used as places of worship, the following have special significance as State Heritage Places entered in the South Australian Heritage Register:

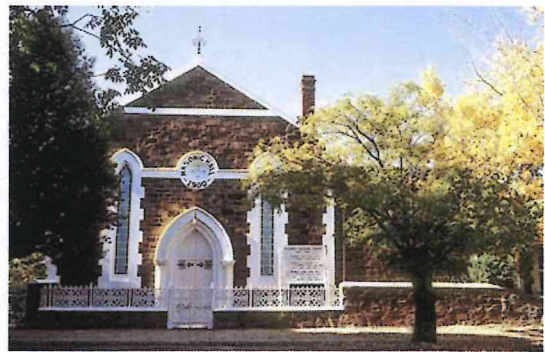
### **former Masonic Hall (former Burra Primitive Methodist Church)**

**9 Thames Street, Burra**

**SAHR 10011 – confirmed as a State Heritage Place 8 November 1984**

The former Primitive Methodist Church is significant as one of Kooronga's earliest churches, and an important aspect of the religious and social life of the predominantly Cornish population of Burra.

The church was built in 1848, on land leased from the South Australian Mining Association for a 999-year term. By 1856 the building was too small for the expanding congregation and, following successful fundraising efforts, a rebuilt chapel was opened on 24 August. At this time the new chapel and the adjacent parsonage were prominent buildings in Kooronga. The front façade dates from 1879-80 when the building was substantially remodelled at a cost of £500.



*Masonic Hall, 1994*

The Primitive Methodist Church was one of three branches of Methodism established in Burra. In 1900 the Primitive Methodists, the Weslyans and the Bible Christian Methodists united to form the Methodist Church. At this time the allotment and the chapel were transferred to the Kooronga Masonic Lodge. The former chapel has since been used by various branches of the Masonic Lodge.

### **Office – former Burra Bible Christian Chapel**

**Kingston Street, Burra**

**SAHR 10013 – confirmed as a State Heritage Place 8 November 1984**



*Office, Paxton Square Cottages, 2005*

When this chapel opened in December 1849, for Burra's Bible Christian Methodists, it was the first Bible Christian Chapel in the colony (and possibly in Australia). Methodism in England had undergone a series of changes during the early 1800s, including the appearance of Bible Christian Methodists, predominantly in the villages of East Cornwall and North Devon. It is not surprising then, that many of the Cornish miners who came to Burra were of this faith, and that Bible Christian work in South Australia began in Burra.

The stone chapel, claimed to seat 200 people, was erected on land set aside by the South Australian Mining Association for the Bible Christians. During the 1851-52 Victorian goldrush, barely a man was left in the congregation and funds were scarce, but by 1853 many miners had returned to the town and the chapel was free of debt.



In 1859, when the Rev. James Way was appointed Superintendent, a religious revival resulted in 300 converts and over 5000 children attending Sunday School. To accommodate this growth, a new church, seating up to 600 people, was built on a corner of Bridge Street (demolished 1909). The chapel continued to be used for Bible meetings.

In 1900 Burra's three branches of Methodism amalgamated to become the Methodist Church. In the 1930s the former chapel was used as a shop by a Chinese greengrocer, and later as a saddlery and mechanics shop. During the mid-1900s it was used as a storehouse for a greengrocery business. To increase storage space, a doorway was knocked through the back wall of the chapel, and a large iron shed was attached to the rear.



*Side view, former Chapel, 2005*

During the 1980s restoration of the [Paxton Square Cottages](#) the chapel was also renovated and is now the reception area for the cottages.

### **former Burra Salvation Army Citadel**

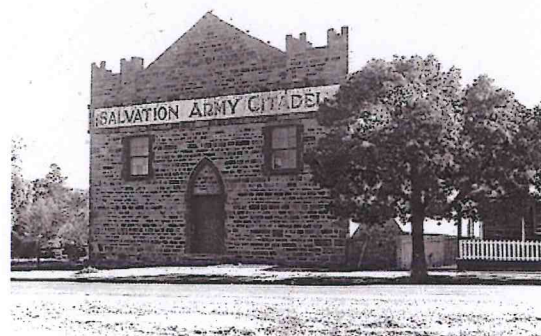
**11 Kingston Street, Burra**

**SAHR 10160 – confirmed as a State Heritage Place 8 November 1984**

This building was opened 16 April 1885 during Burra's post-mining period, when the town was developing as an important rural centre in the mid-north. The builder was Sara & Dunstan and the foundation stone had been laid by the Mayor, John Dunstan Jnr, on 11 February 1885. The austere stone building is a significant reminder of the Salvation Army's activities in country areas during the nineteenth century.



*Former Citadel, 2005*



*Salvation Army Citadel, 1983*



*Anglican Hall bell*

### **St Mary's Anglican Church**

**Market Street, Burra**

**SAHR 10018 – confirmed as a State Heritage Place 24 July 1980**

**&**

### **St Mary's Anglican Church Hall**

**Market Street, Burra**

**SAHR 10022 – confirmed as a State Heritage Place 8 November 1984**

Amongst Burra's population Anglicans were a minority, as most miners were Cornish and of a Methodist faith. The first Anglican services in Burra were held at the junction of Ware and Church Streets in 1849. The Church site was donated by the copper mining company (SAMA).

The present St Mary's Church of England was completed in 1879 (two years after the mine's closure) at a cost of £4,000.

It was built by the Burra firm of Sara & Dunstan and designed by G.F. McLagan, who came to live in Burra from Melbourne.

The Gothic-style church contains many memorials to Burra's long-established families. It also has 12 stained glass memorial windows, two of which are from the original St Mary's Church.

The Church Hall was built in 1893 as a schoolroom. Its Gothic design complements that of the church.



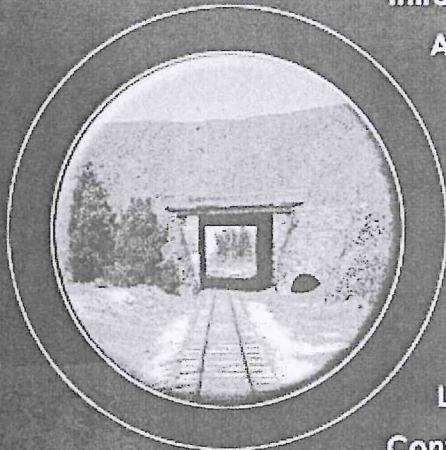
*Anglican Church and Hall, 2005*



Government of South Australia  
Department for Environment  
and Heritage



State  
Heritage  
Areas  
of  
South Australia



Latest News


Introduction  
About State Heritage Areas  
Locations & Maps  
Areas in Detail  
Protection & Conservation  
Visiting  
Stories & Images  
Resources  
Links  
Contact Us

search

sitemap

Privacy, Disclaimer, Copyright © 2006

South Australia  
Central



Government of South Australia  
Department for Environment and Heritage

SHR 10018

[edit search](#) | [new search](#) | [about the Australian Heritage Database](#) | [Heritage home](#) | [Australian Heritage Council home](#)

## Send Feedback

**Photographs:** None  
**List:** Register of the National Estate  
**Class:** Historic  
**Legal Status:** Registered (21/03/1978)  
**Place ID:** 7378  
**Place File No:** 3/08/240/0002

Part of the historic complex of Burra, the Church was built to accommodate the Church of England followers at Burra. These were in the minority as most miners were Cornish and of the various forms of Methodism. The Church was built in the same decade as the Mine closed. It contains many memorials to long established families of Burra.

(The Commission is in the process of developing and/or upgrading official statements for places listed prior to 1991. The above data was mainly provided by the nominator and has not yet been revised by the Commission.)

**Official Values:** Not Available

The Church site was donated by the Burra Copper Mining Company. Worship records commence 1848. The present church cost 4,000 pounds and was completed in 1879. The builder was Sara and Dunstan. Rich in memorial representation and commemorates the names of many long-established families. There are twelve stained glass memorial windows, two of which are from the original St Marys in Burra.

**History:** Not Available

**Condition and Integrity:** Not Available

Market Street, Burra.

'BURRA SKETCHBOOK', BY I.AUHL & M.PERRY., 'COLONISTS, COPPER & CORN IN THE COLONY OF S.A.', ED. BY E.M.YELLAND.

---

**Property:** Religious Building  
St Mary's Anglican Church

**File No:** 6630-10018

---

**Owner:** Synod Diocese of Willochra Anglican Church

**Address:** The Secretary  
Synod Diocese of Willochra Anglican Church  
PO Box 47, Burra SA 5417

**Telephone:**

---

**Inspected by:** Douglas Alexander

**Address:** 2 Albert Street, Thebarton, South Australia 5031  
**Telephone:** 234 1811  
**Date:** 2.11.94

---

**Summary:** The Church occupies a prominent elevated site, a level platform excavated into a hillside. (the high side of Market Street) The Church is located on an East/ West axis. Both the church building and the hall are located on the same site, accessed by a driveway from Market Street.

It is open during daylight hours to tourists, and is maintained by a small group of dedicated church goers.

Construction is of bluestone, with timber floors, substantial timber trusses and a timber board ceiling.

The Church consists of nave, transepts, sanctuary, vestry and ante room. The organ occupies a mirror image space of the ante room. There is no symmetrical equivalent of the vestry.

The cleaning and repair of high level wall areas internally (ie. spiderwebs and dust) is a problem.

---

**Action:** Regular monitoring of building required, including box gutter to avoid possible leakage of roof, and flashings to parapet. Some repainting is required

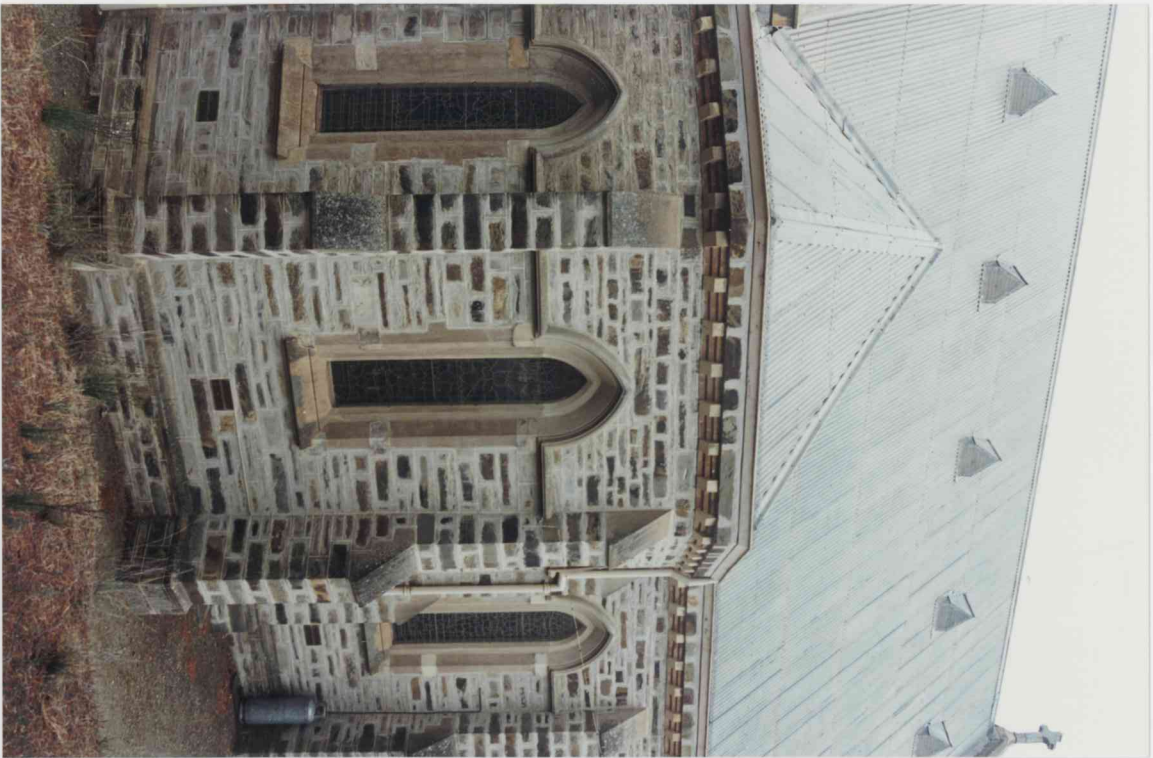
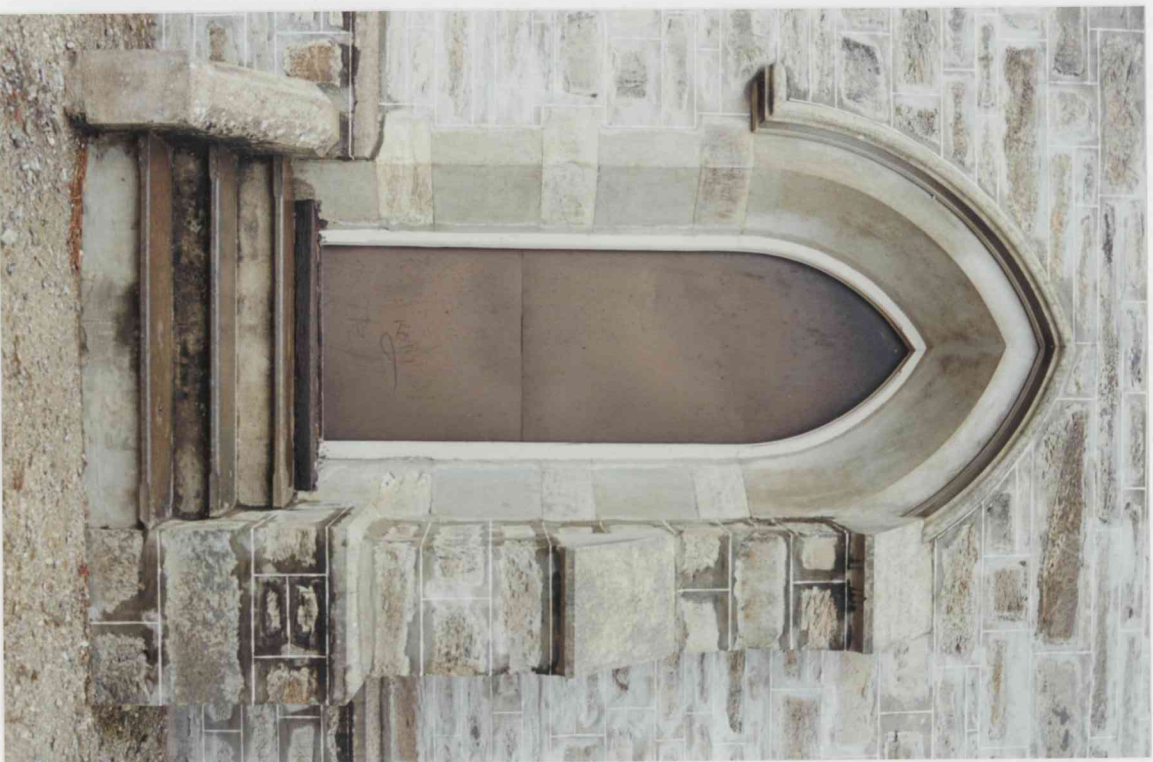
---

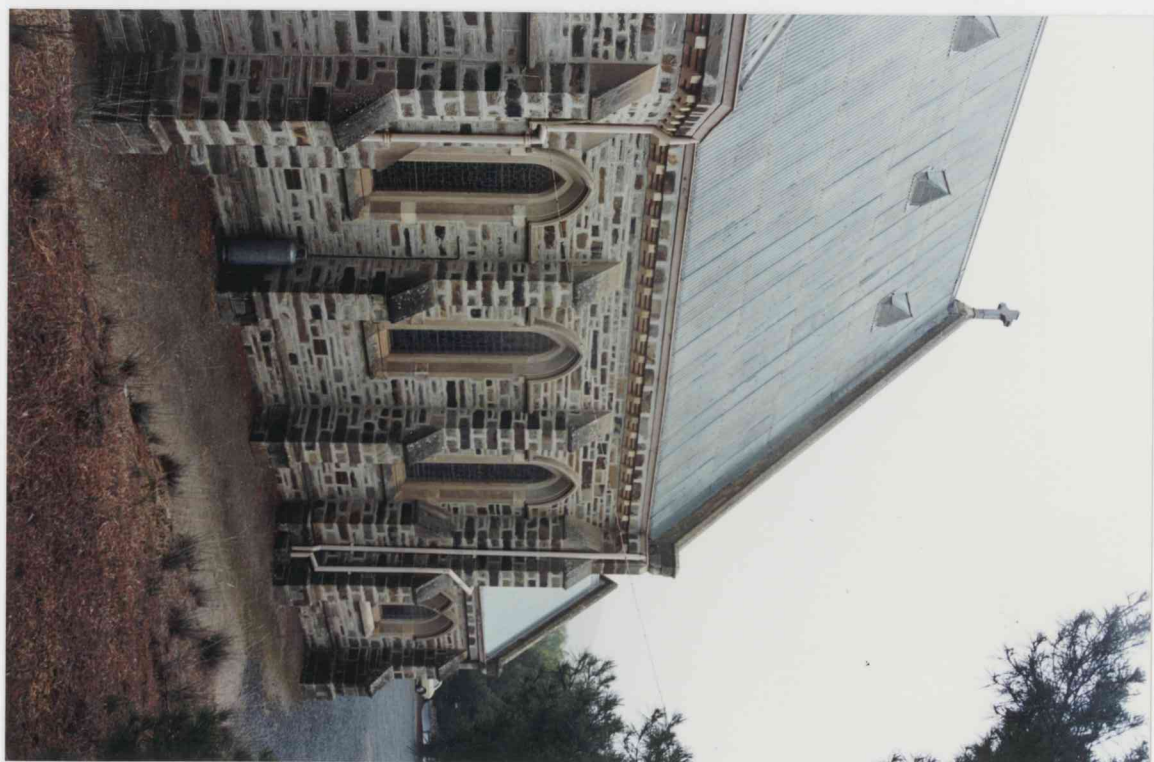
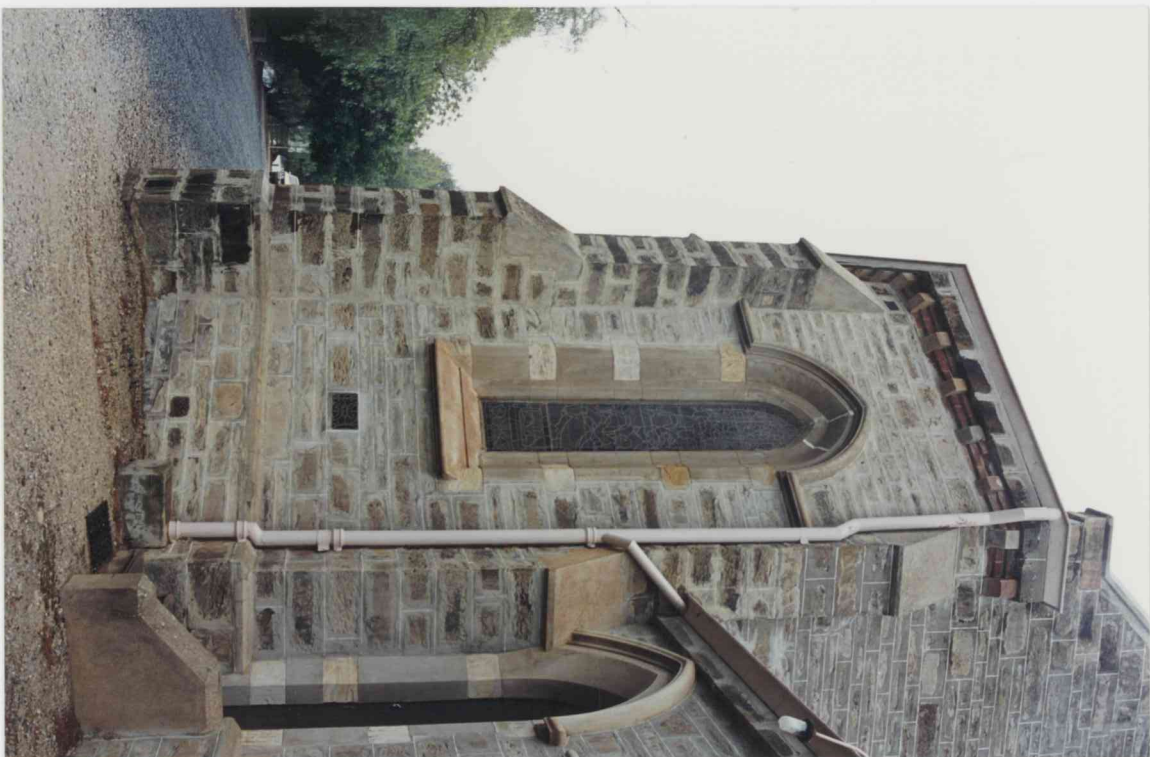
**Recommendation:** Improve setting of Church and Hall.

---



RELIGIOUS BUILDING -  
ST. MARY'S ANGLICAN CHURCH.



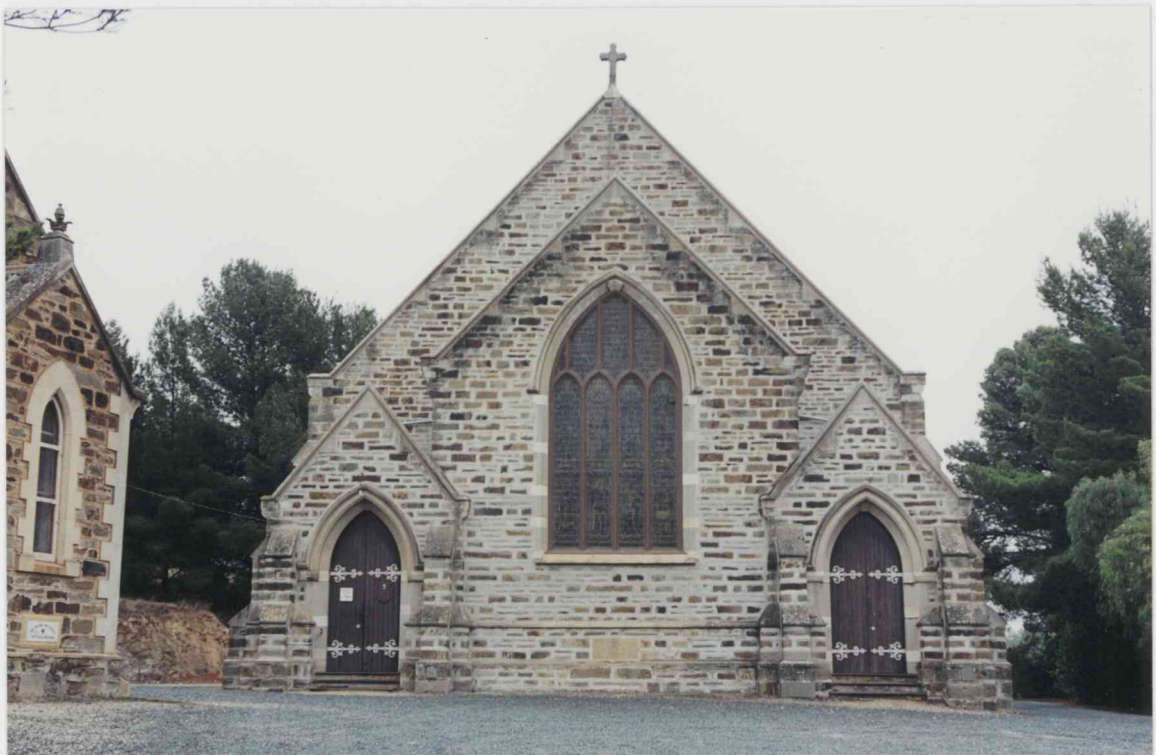


~ PUNTO 108 ZOOPIANO  
 BISHOP MASONRY STATION 42



RELIGIOUS BUILDING -  
ST. MARY'S ANGLICAN CHURCH.

6630-10018.





St. Mary's Mission Church -  
- original building -

1901 - 1902