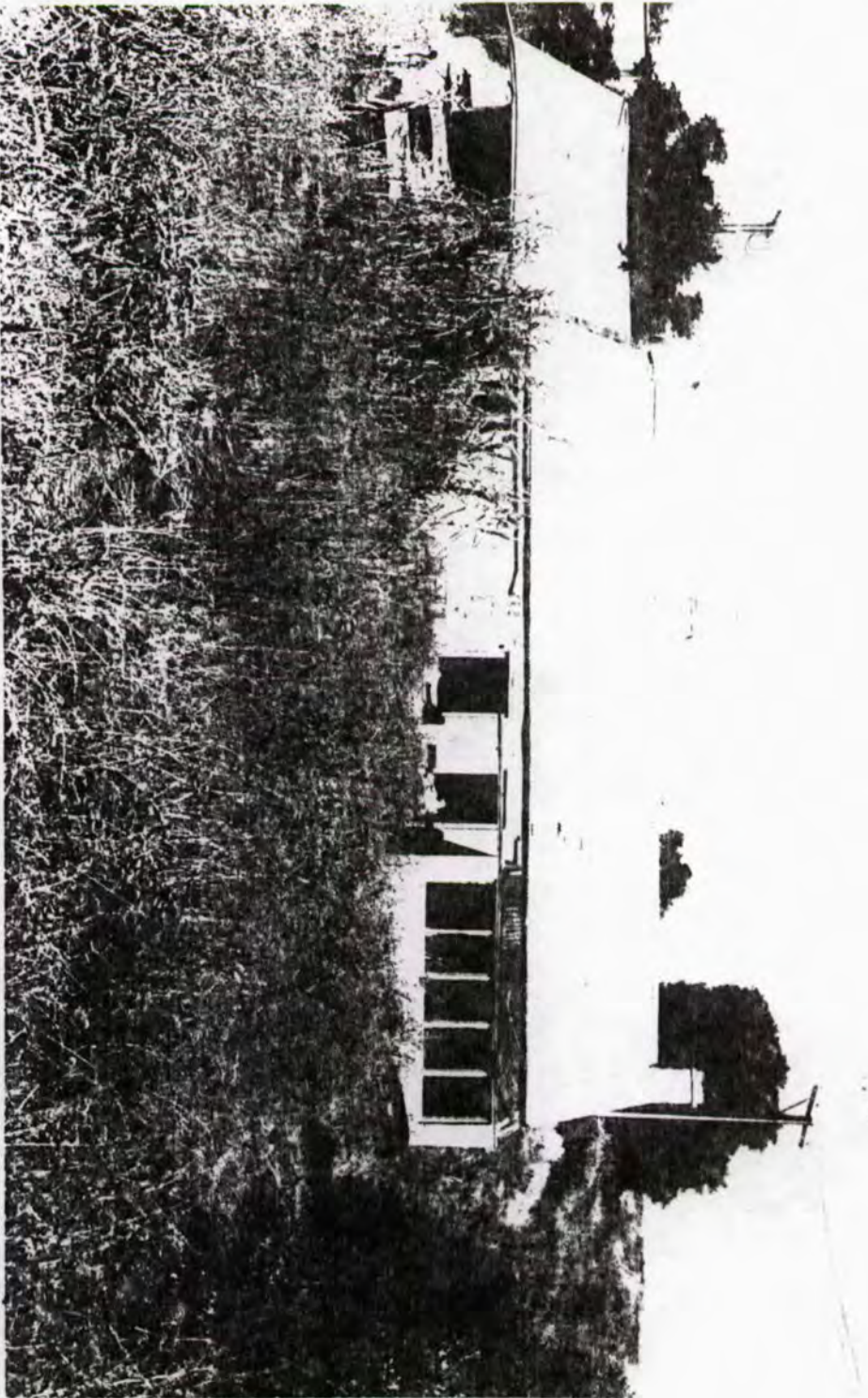


South Australian Heritage Act 1978-80	Register of State Heritage Items ITEM EVALUATION SHEET Buildings and Structures						
	Item 'MINE SQUARE' COTTAGE GOVERNMENT ROAD, KAPUNDA.						
Age 1846	Theme		Office				
Period 1837-1851	Subject HABITATION - ASSOCIATED WITH MINING		Region Lower North				
Building Type Cottage	Style EARLY VICTORIAN-VERNACULAR		Status N.E.R. N. Tr. (C1.)				
<u>Qualitative Data</u>			<u>Grading</u>				
Component		Comment	E	VG	AG	FP	NA
<u>History</u>							
1. Context:	The cottage is associated with the establishment of copper mining in South Australia. The mine at Kapunda in 1844, was the earliest instance of metal mining on a commercial scale in Australia. The mine was finally worked out at a depth of 124 metres in 1886, after producing 70,000 tonnes of copper. The town of Kapunda grew up around the mines and continued to develop after mining ceased.		*				
2. Person/Group:	The remaining cottage is what survives of a group of three rows of cottages built between 1844 and 1846 by Francis Dutton and Charles Bagot, as housing for the miners working in their Kapunda copper mines. Dutton and Bagot already owned substantial grazing property in the area, (Dutton owned 'Anlaby' and Bagot was owner of 'Koonunga') when they discovered copper and established their claim to the ore-rich section in 1842.		*				
3. Event:	Not yet established.						*
<u>Architecture</u>							
4. Architect/Builder:	Not yet established.						*
5. Design:	Part of a row of cottages two rooms deep. Overall design is simple, rectangular plan with gable roof, short stubby chimneys, austere detailing.			*			
6. Construction:	Rubble stone walling, plastered and white-washed, corrugated iron gable roof.			*			
7. Interior:	Plain, utilitarian, simple modest detailing.			*			
8. Representation:	Scarce for the period.		*				

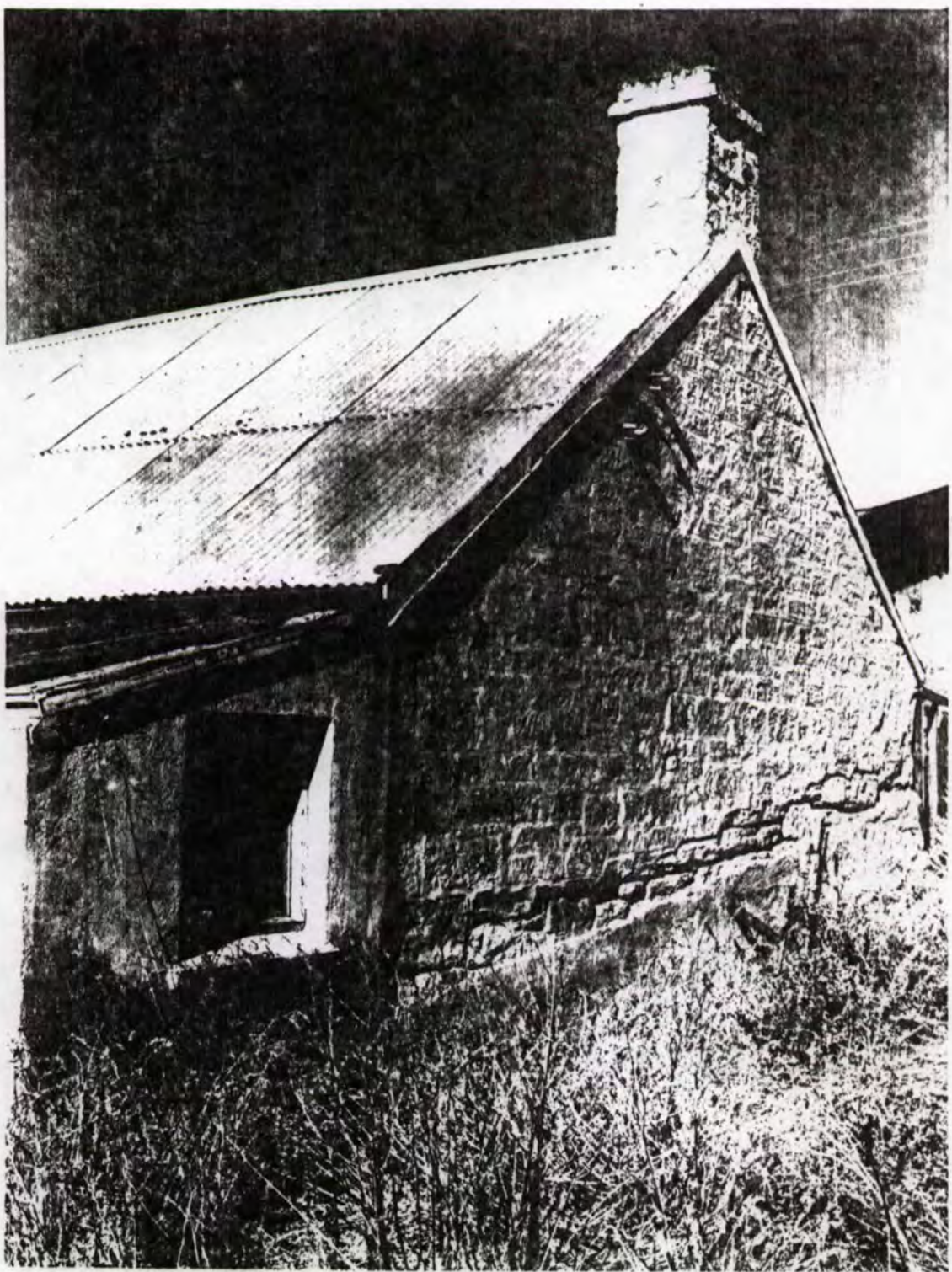
I.E.S./D3/211081

South Australian Heritage Act 1978-80	Register of State Heritage Items ITEM EVALUATION SHEET Buildings and Structures						
	Item	'MINE SQUARE' COTTAGE GOVERNMENT ROAD, KAPUNDA.					
Component	Comment		Grading E VG AG FP NA				
<u>Environment</u>							
9. Continuity:	Because of its scale, form, intended use and construction, it is an important element in the historic mining area.		*				
10. Local Character:	Same as for note 9.		*				
11. Landmark:	Not a visually conspicuous building but in its setting, it is well-known historically.			*			
<u>Integrity</u>							
12. Alterations:	Fabric basically intact, minor upgradings, alterations obvious.				*		
13. Condition:	Cottage is in a bad state of repair, some ceilings and external walls have collapsed.					*	
14. Compatibility:	Presently vacant.					*	
<u>Supplementary Information</u>							
Adaptation:	The cottage has a limited potential for adaptation beyond a residential function. The basic form and the external appearance should be maintained.						
Interpretation:	The cottage has potential for interpretation as part of the overall mining complex in an important early mining area.						
Current Situation:	The cottage is owned by the Trustee of the State Heritage. Implementation of the conservation and restoration plan already prepared by the Heritage Conservation Branch will be necessary soon to ensure the future of the building.						
Evaluated By	Kate McDougall Consultant Historian	Lothar Brasse Consultant Architect	Date				
Reviewed By	Ivar Nelsen		Date				
South Australian Heritage Committee Categorization			Date				



FILM 33
NO 1 "MINE SQUARE" COTTAGE

KAPUNDA
8-2-79



FILM 33
NO 7

NORTH WALL "MINE SQUARE" COTTAGE

KARUNDA
8-2-79

'MINE SQUARE' COTTAGE, GOVERNMENT ROAD, KAPUNDA

Sources:

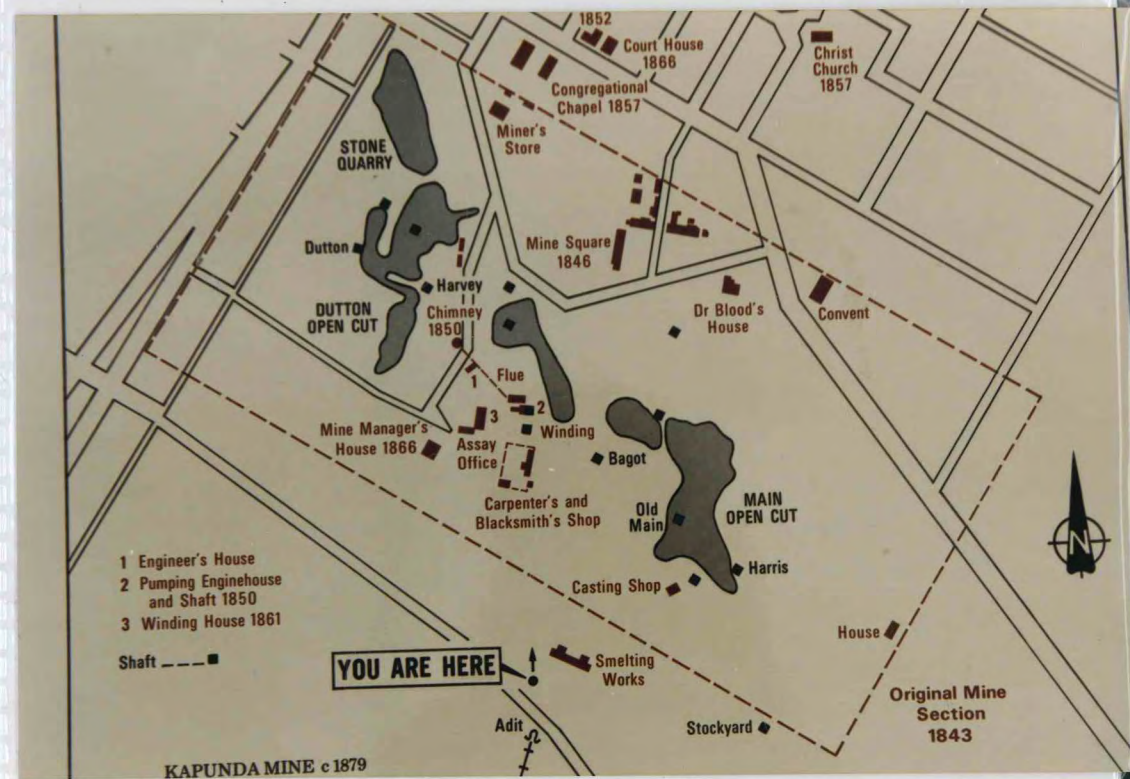
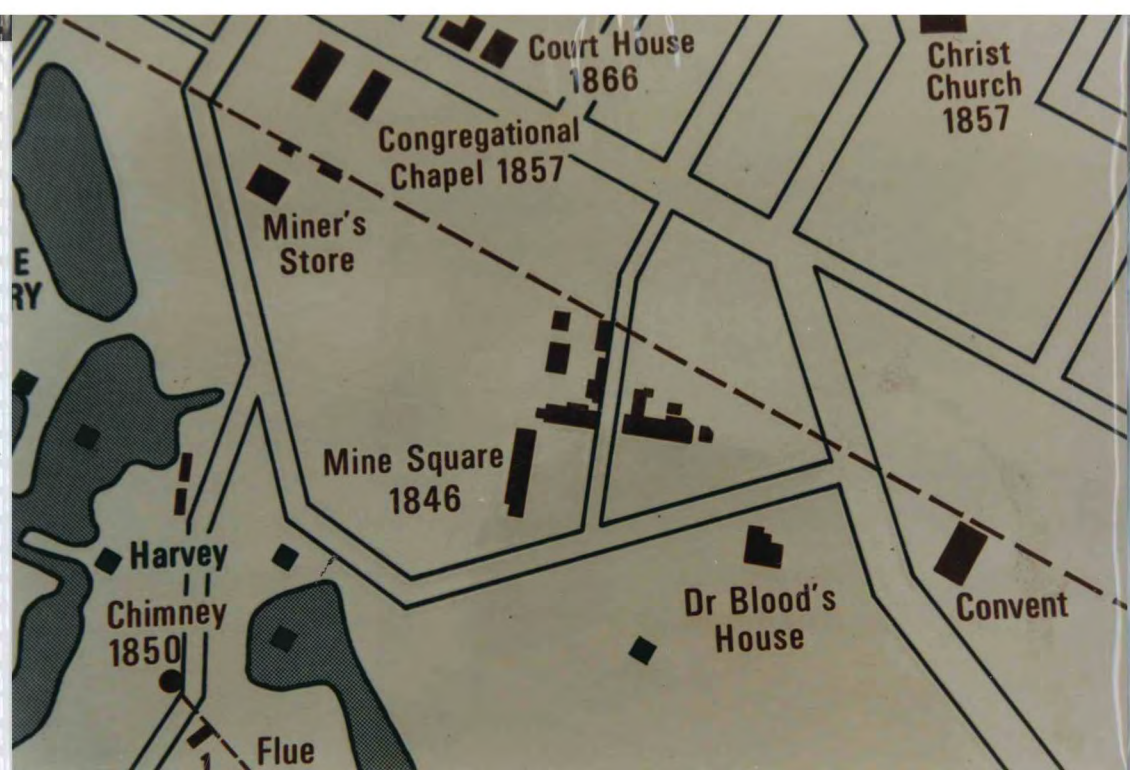
Ian Auhl and Dennis Marfleet, Australia's Earliest Mining Era: S.A. 1841-1851 (Adel. 1975).

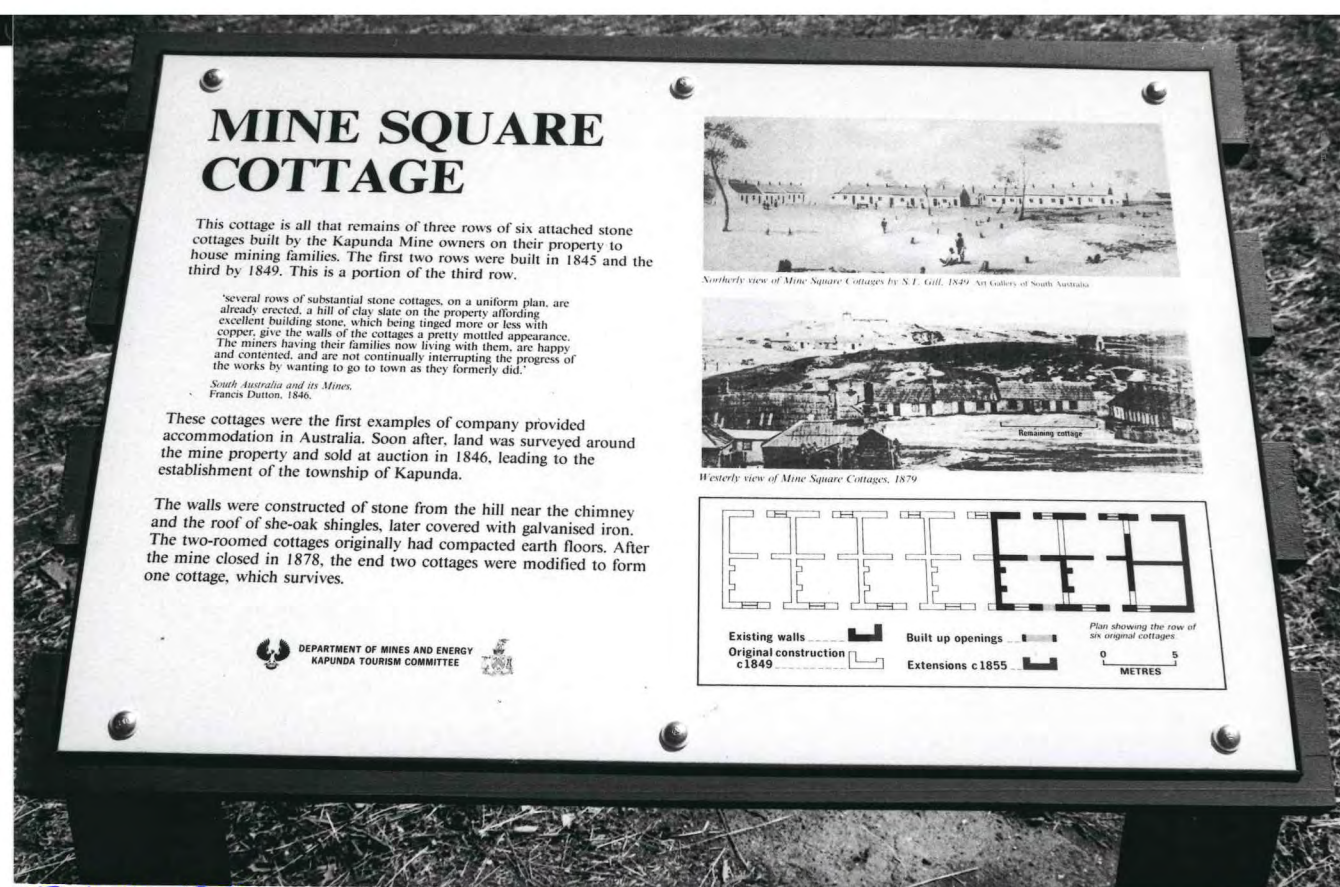
Brian Carroll, Australia's Mines and Miners (Melb, 1977)

Rob Charlton, The History of Kapunda (Melb., 1971)

Francis S. Dutton, South Australia and its Mines (London, 1846)

G. Pretty, Report on Surviving Cottages - Mine Square, Kapunda (S.A. Museum, 1971)



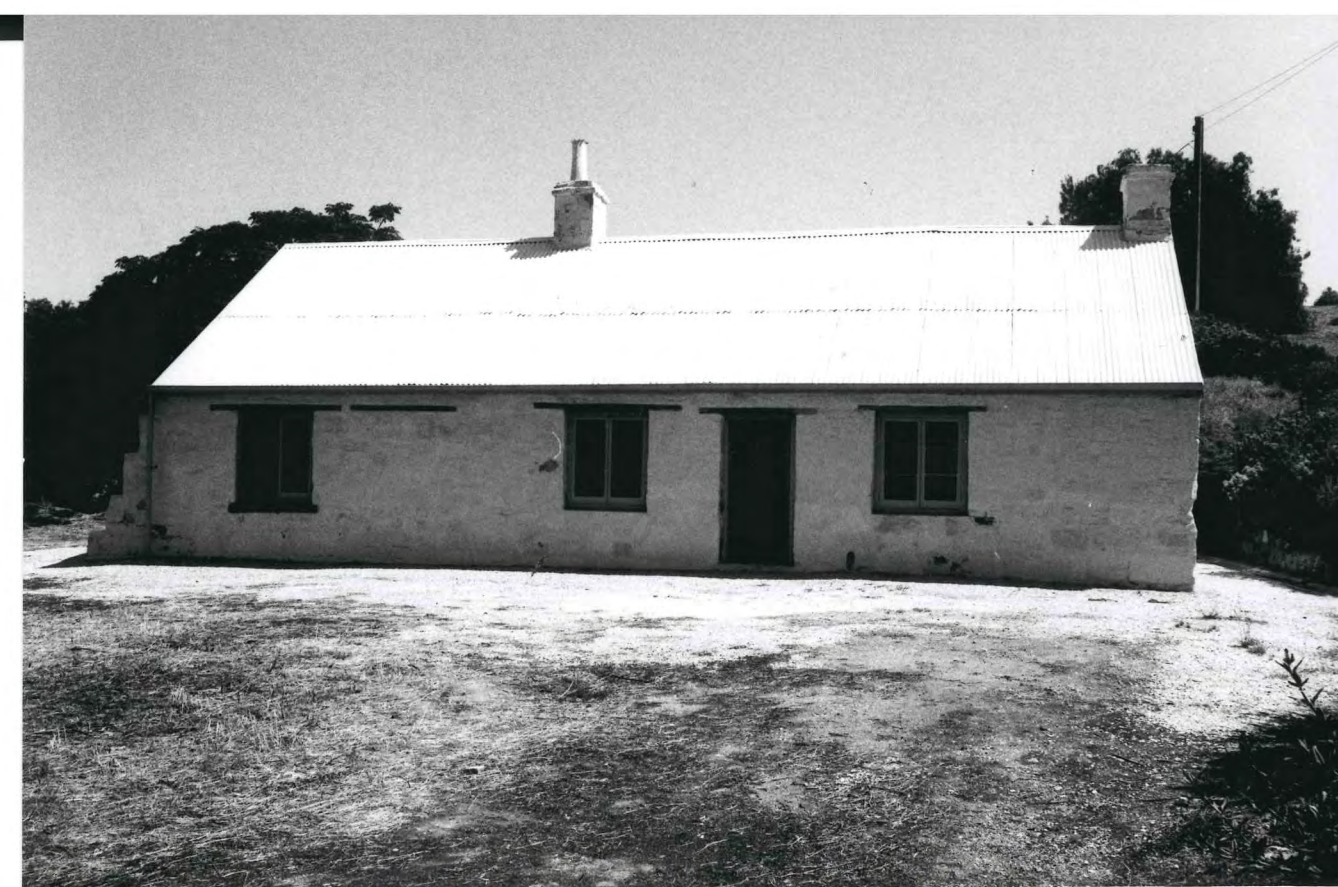


FILM NO 1752
NEG. 22

INTERPRETIVE SIGNBOARD

6629-10103

9.3.92



FILM 1752
NEG. 23

SOUTH ELEVATION (TERMITE-DAMAGED
WINDOW FRAME AT LEFT)

6629-10103

9.3.92

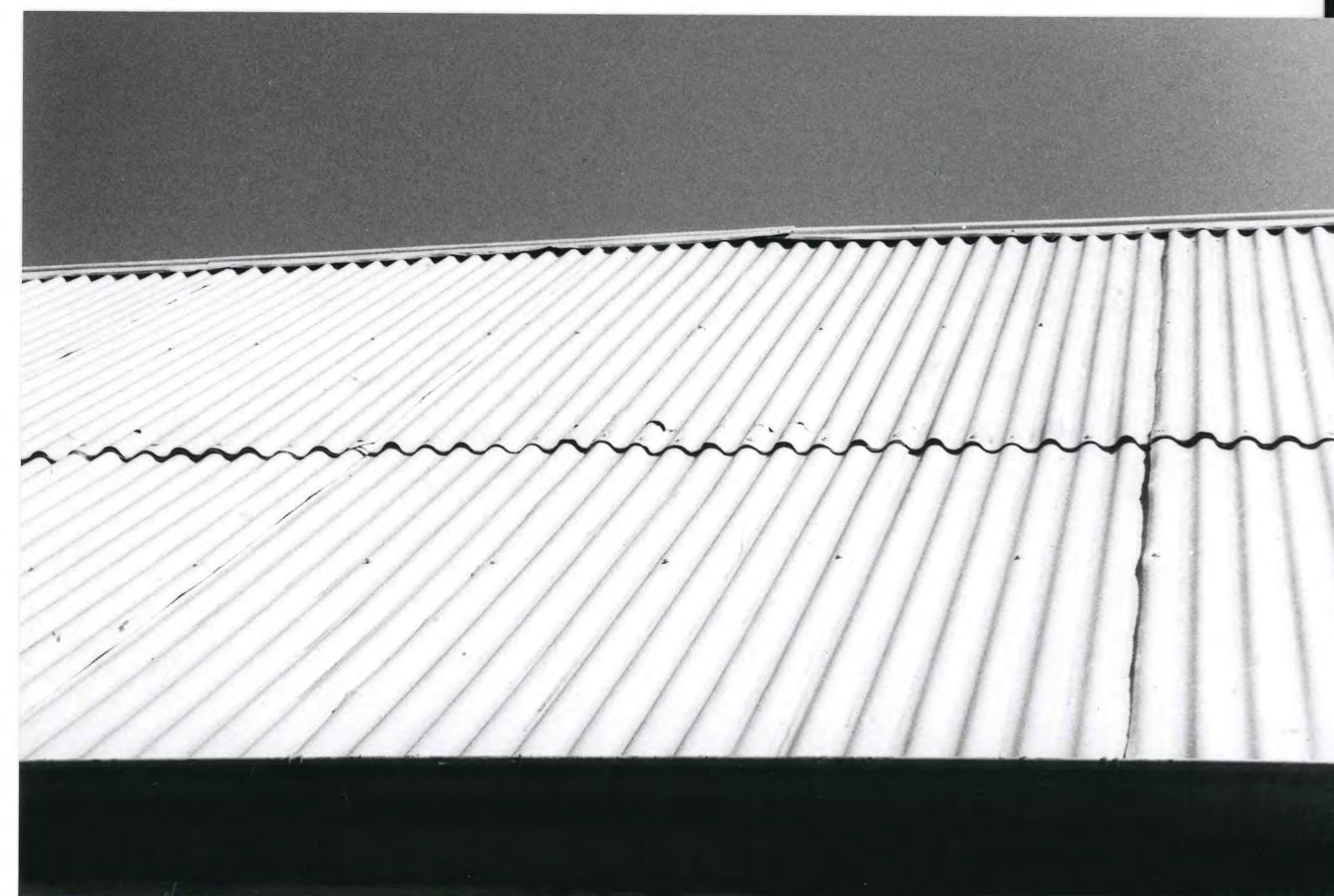


FILM 1752
NEG. 25

TERMITE-EATEN WINDOW
FRAME (S.W. CORNER)

9.3.92

6629-10103



FILM 1752
NEG. 24

CORRODED LAP JOINT
(S. SIDE)

6629-10103

9.3.92



FILM 1752
NEG. 31

NORTH ELEVATION

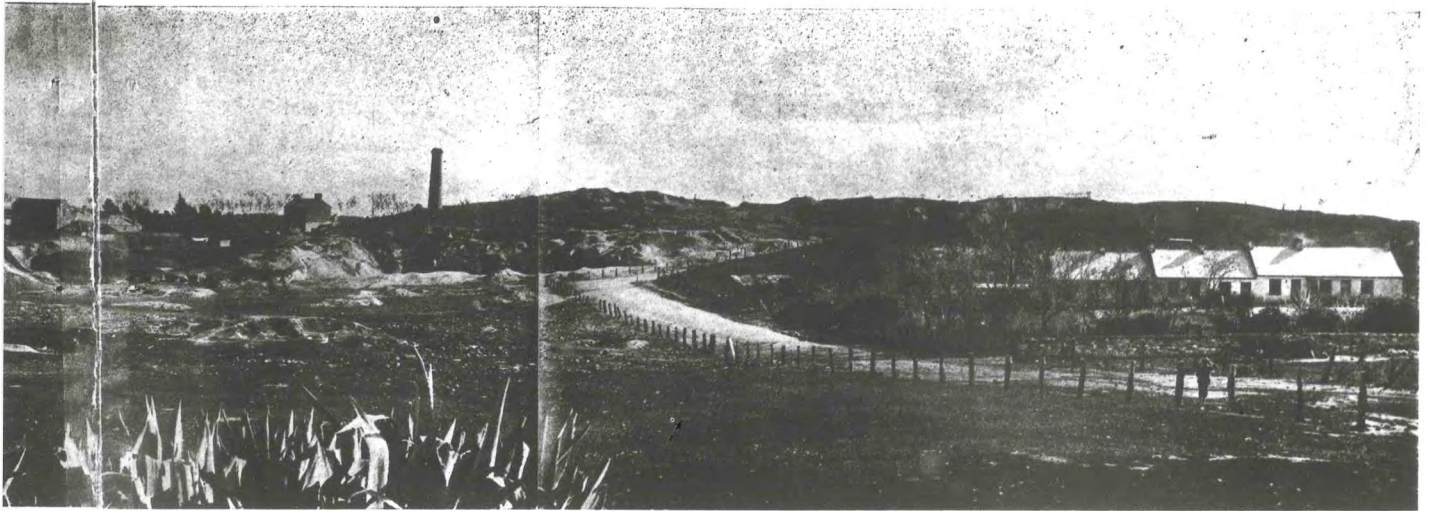
9.3.92
6629-10103



FILM 1752
NEG. 30

ROOF FROM N.E.

9.3.92
6629-10103

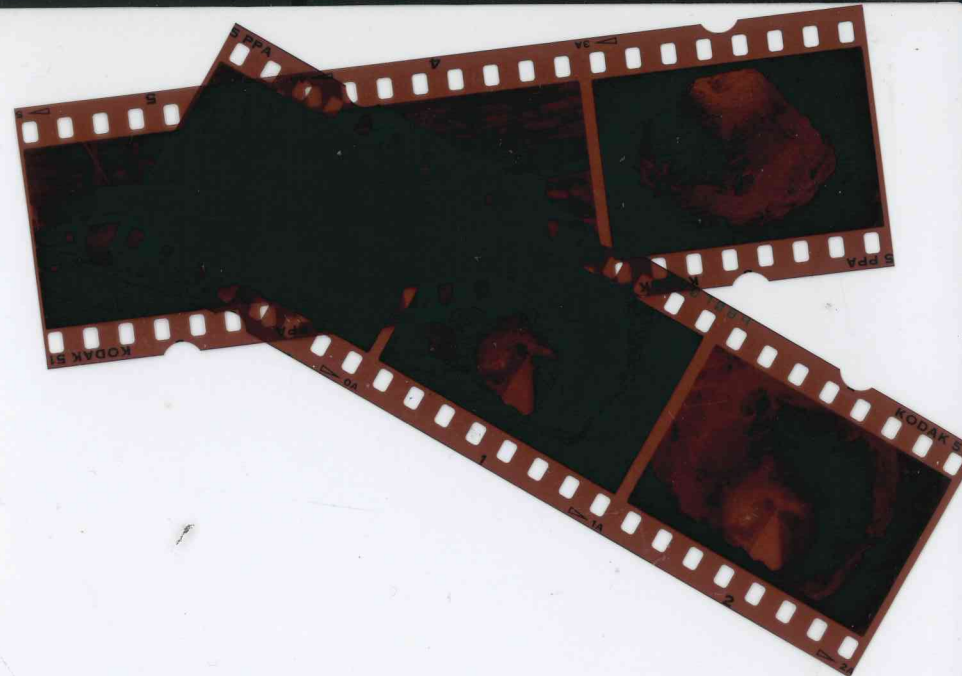


THE KAPUNDA MINE IN 1903.

Assaying from 184 to 194, value of £1,082 7/10, being a net value OUR ILLUSTRATIONS. ly supplied to us by Captain Osborne, (recognised by the large where the discovery of



No further reproduction of this photo permitted without permission from the Mortlock Library of South Australia.







FILM 33 INTERIOR, "MINE SQUARE" COTTAGE
NO 3

KAPUNDA
8-2-79



FILM 33 "MINE SQUARE" COTTAGE, GOVERNMENT RD,
NO 4 INTERIOR

KAPUNDA
8-2-79



FILM 33 NORTH WALL "MINE SQUARE" COTTAGE
 NO 7

KAPUNDA
 8-2-79



FILM 33 "MINE SQUARE" COTTAGE
 NO 1

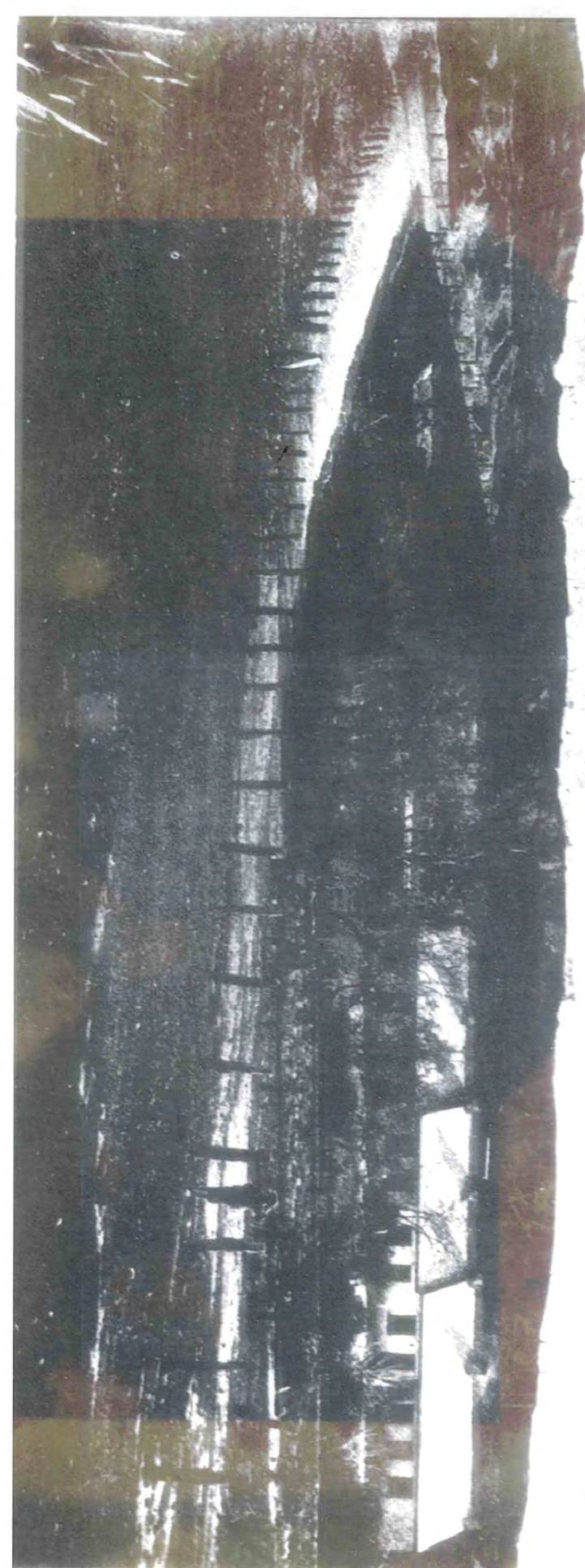
KAPUNDA
 8-2-79

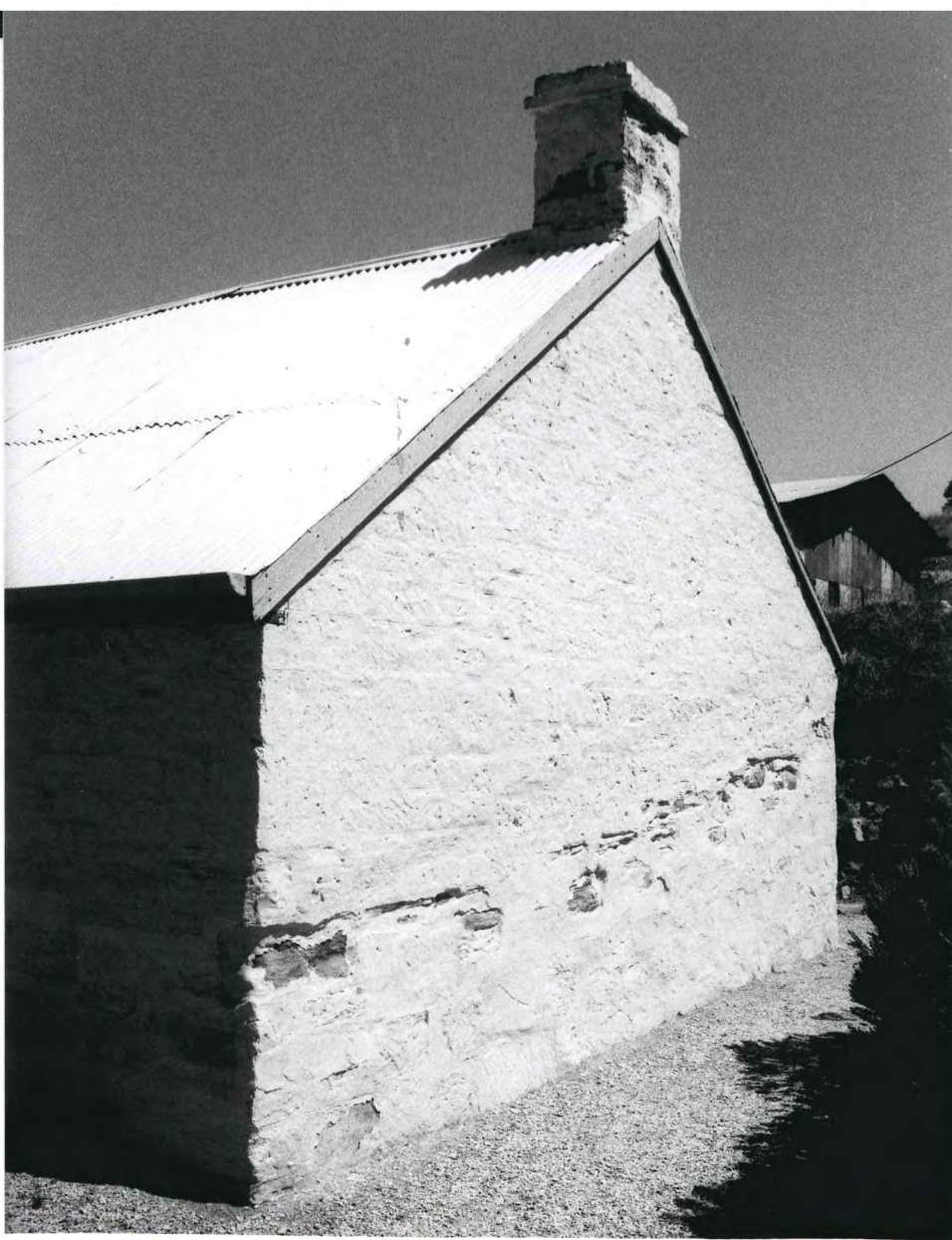


FILM 33
NO 3

INTERIOR, "MINE SQUARE" COTTAGE
6629 -10103

KAPUNDA
8-2-79





FILM 1752 SALT CAMP
NEG. 28 E. WALL

9.3.92
6629-10103



FILM 1752 CLOSE-UP - TERMITES IN
NEG. 26 WINDOW FRAME S.W. CORNER 9.3.92
6629-10103



FILM 1752 SALT DAMP S.W. CORNER
NEG. 27

9.3.92
6629-10103



FILM 1752 S.W. ROOM
NEG. 29

9.3.92
6629-10103

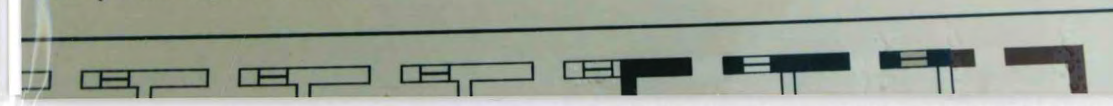




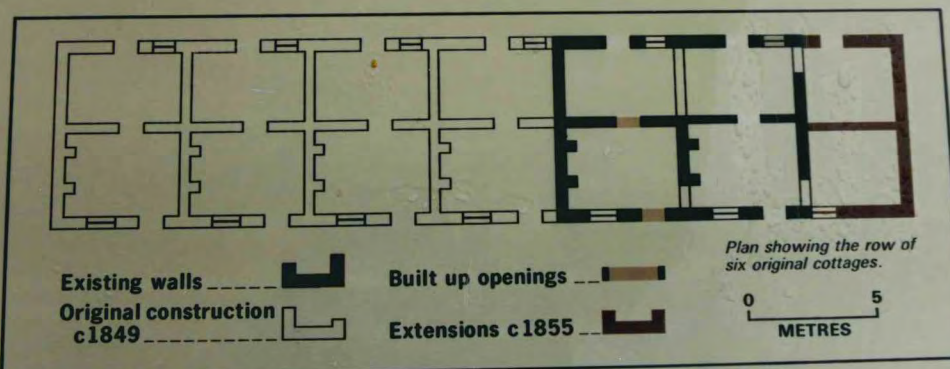
Northerly view of Mine Square Cottages by S.T. Gill, 1849 Art Gallery of South Australia



Westerly view of Mine Square Cottages, 1879



Westerly view of Mine Square Cottages, 1879



MINE SQUARE COTTAGE

This cottage is all that remains of three rows of six attached stone cottages built by the Kapunda Mine owners on their property to house mining families. The first two rows were built in 1845 and the third by 1849. This is a portion of the third row.

"Several rows of substantial stone cottages, on a uniform plan, are already erected, a hill of clay slate on the property affording excellent building stone, which being tinged more or less with copper, give the walls of the cottages a pretty mottled appearance. The miners having their families now living with them, are happy and contented, and are not continually interrupting the progress of the works by wanting to go to town as they formerly did."

South Australia and its Mines, Francis Dutton, 1846.

These cottages were the first examples of company provided accommodation in Australia. Soon after, land was surveyed around the mine property and sold at auction in 1846, leading to the establishment of the township of Kapunda.

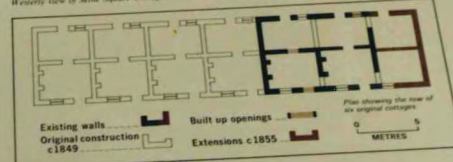
The walls were constructed of stone from the hill near the chimney and the roof of she-oak shingles, later covered with galvanised iron. The two-roomed cottages originally had compacted earth floors. After the mine closed in 1878, the end two cottages were modified to form one cottage, which survives.



Northerly view of Mine Square Cottages by S.T. Gill, 1849 Art Gallery of South Australia



Westerly view of Mine Square Cottages, 1879







MINE SQUARE COTTAGE

This cottage is all that remains of three rows of six attached stone cottages built by the Kapunda Mine owners on their property to house mining families. The first two rows were built in 1845 and the third by 1849. This is a portion of the third row.

'several rows of substantial stone cottages, on a uniform plan, are already erected, a hill of clay slate on the property affording excellent building stone, which being tinged more or less with copper, give the walls of the cottages a pretty mottled appearance. The miners having their families now living with them, are happy and contented, and are not continually interrupting the progress of the works by wanting to go to town as they formerly did.'

*South Australia and its Mines,
Francis Dutton, 1846.*

These cottages were the first examples of company provided accommodation in Australia. Soon after, land was surveyed around the mine property and sold at auction in 1846, leading to the



Northerly





Northerly view of Mine Square Cottages by S.T. Gill, 1849 Art Gallery of South Australia

