

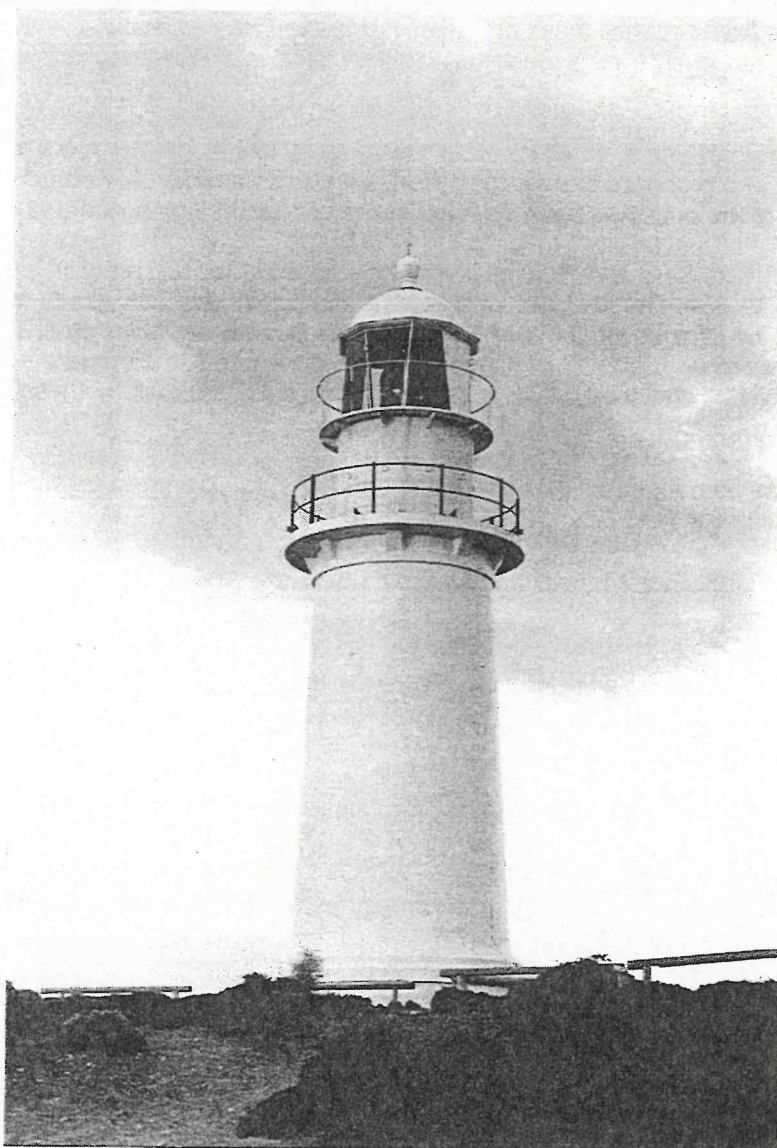
Corny Point Lighthouse**YP:067****LOCATION**

Address Lighthouse Road, Corny Point SA 5575
Land Description Section 19, Hundred of Carribe
Certificate of Title 2698/29

Owners C Hancock, Australian Maritime Safety Authority, PO Box 1108, Belconnen ACT 2616

State Heritage Status Registered, 24 July 1980 **SHR File No** 10110
Other Assessments Register of the National Estate, Registered
National Trust of SA, Classified (File No. 2421)

Photograph No PB09/47



Lighthouse, Corny Point

Corny Point Lighthouse**YP:067****DESCRIPTION**

Circular masonry tower 12 m high and 2.7m in diameter, with original cast iron lantern room.

STATEMENT OF HERITAGE VALUE

The lighthouse is associated with South Australia's maritime history and early economic development and is one of several similarly designed lighthouse in the State. It is a landmark on the southwestern coast of Yorke Peninsula.

HISTORY

This lighthouse was not erected until 1873, although the waters adjacent to the southern coast of Yorke Peninsula would have been among the busiest in the State from the early years of its settlement. Ships coming to Adelaide from the west coast of Yorke Peninsula, Eyre Peninsula, Western Australia and even the rest of the world have to pass between the Peninsula and Kangaroo Island in order to enter St Vincent's Gulf.

After a delay of several years, in which time the hazards of the nearby reefs were continually being reported, a survey of a proposed site for the lighthouse was undertaken in February 1881. A spot on the most western part of the point had been selected as the site for the lighthouse and cottages.

On 7 June 1881 Messrs Sara and Dunstan signed the contract for the erection of the lightstation. The contract sum was £2,859. By October of that year the lighthouse was ready to receive the lantern, designed and built by Chance Brothers of England. The lantern and third order light were delivered to the site on 31 December 1881. The lighthouse was completed in February 1882. The completed lightstation consisted of the tower, two cottages and a store, similar to those constructed at Cape Northumberland.

The lightstation was demanned on 13 June 1920 and the light converted to automatic operation. The cottages were demolished in 1922.

References

State Heritage Branch Files, File No. 10110

Danvers Architects, *Corny Point Lighthouse conservation Plan*, Australian Construction Services and AMSA

DRAWING N° 3

— CORNY POINT LIGHTHOUSE —

COTTAGES &c. FOR KEEPERS

— Scale $\frac{1}{4}$ inch to a foot.

CONTRACT N° $\frac{25}{81}$

1960

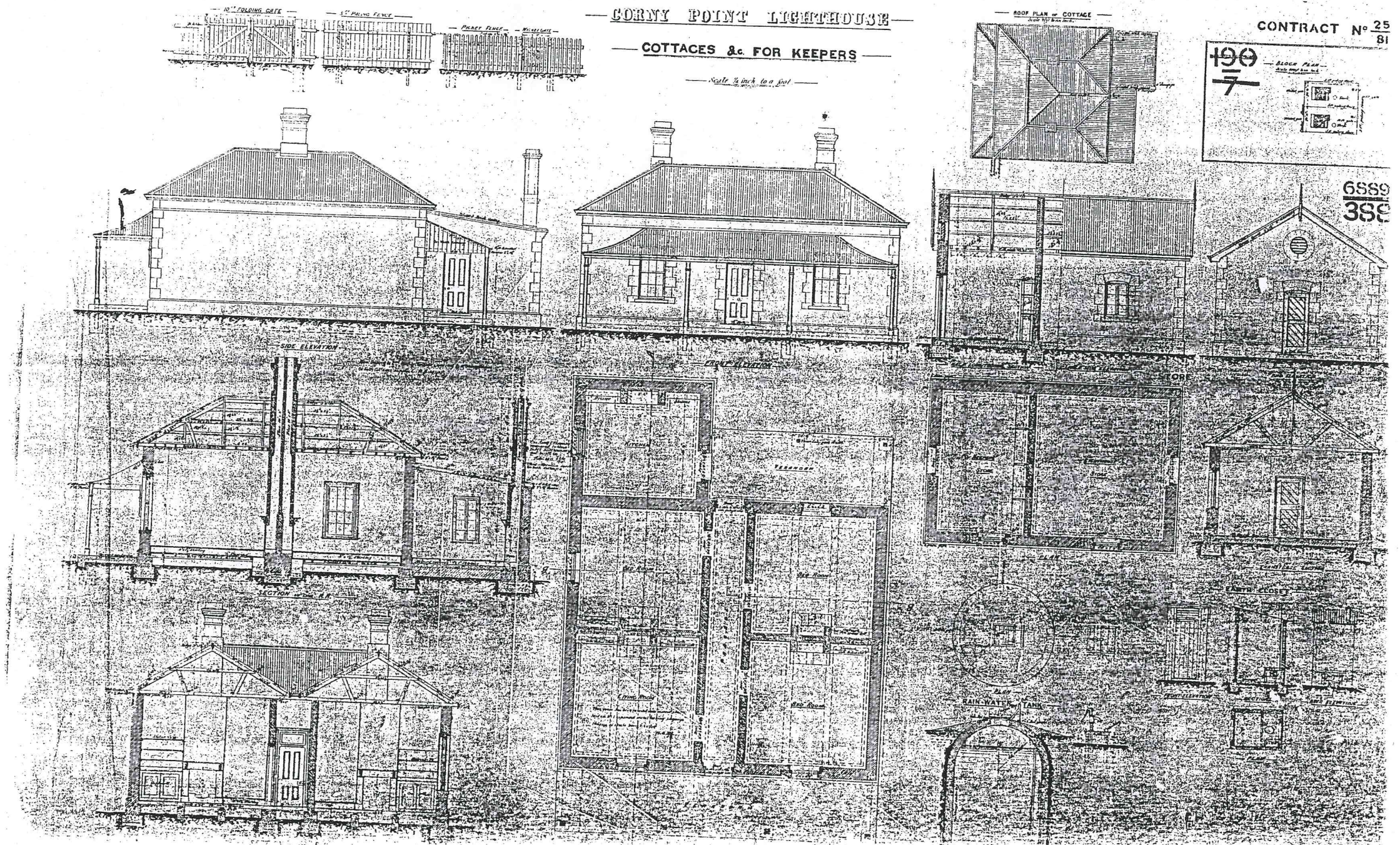
— BLOCK PLAN —
Block map of base building

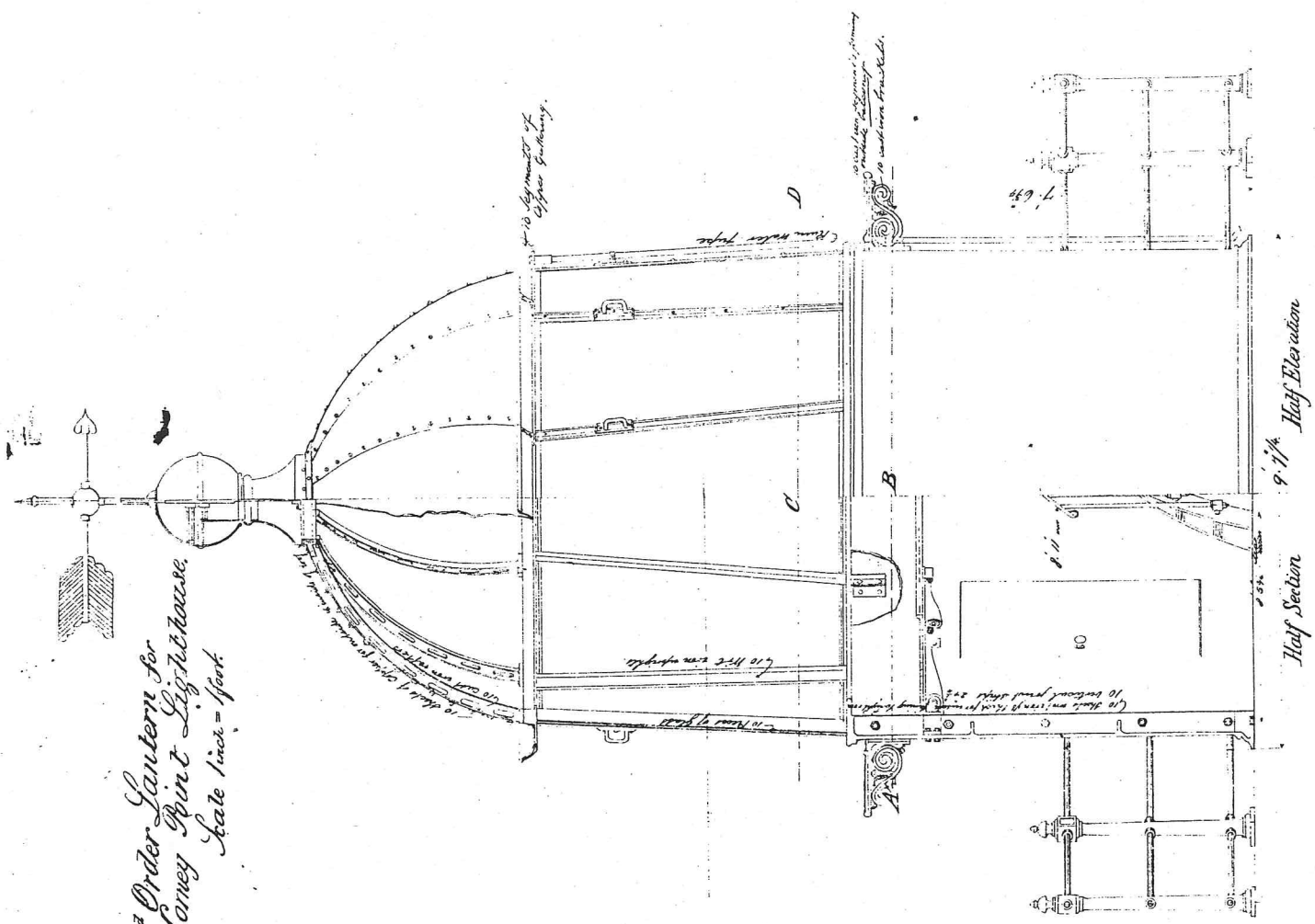
1st floor plan

2nd floor plan

GATE

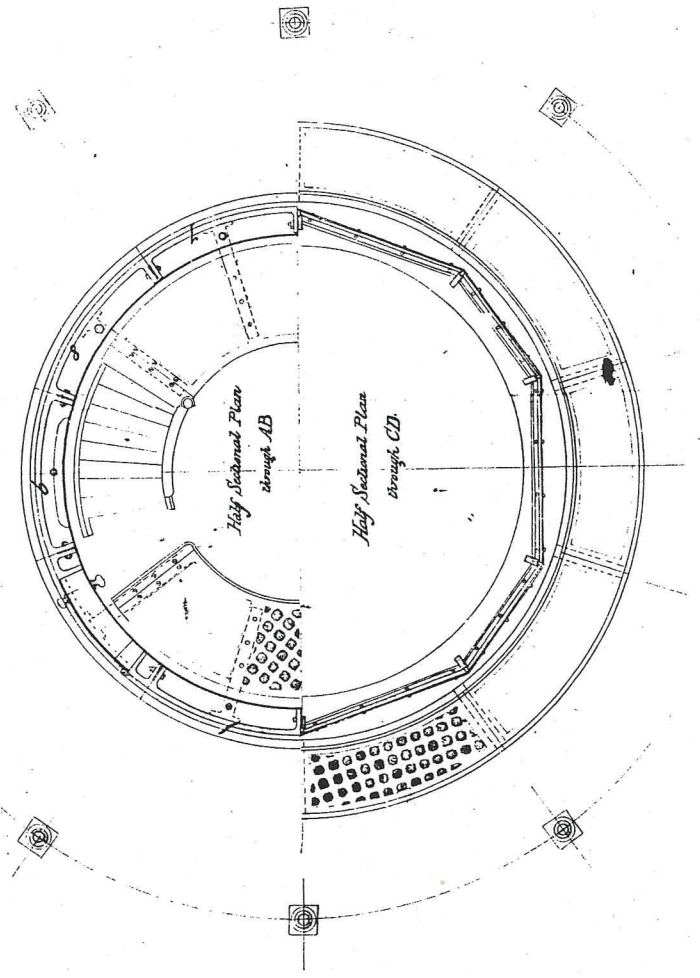
6889
359





3rd Order Lantern for
Caney Point Light House.
Scale 1 inch = 1 foot.

SSC
S169



SSC
S169



DRAWING N° 2

LIGHTHOUSE

FOR

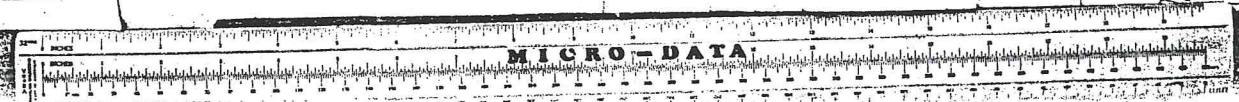
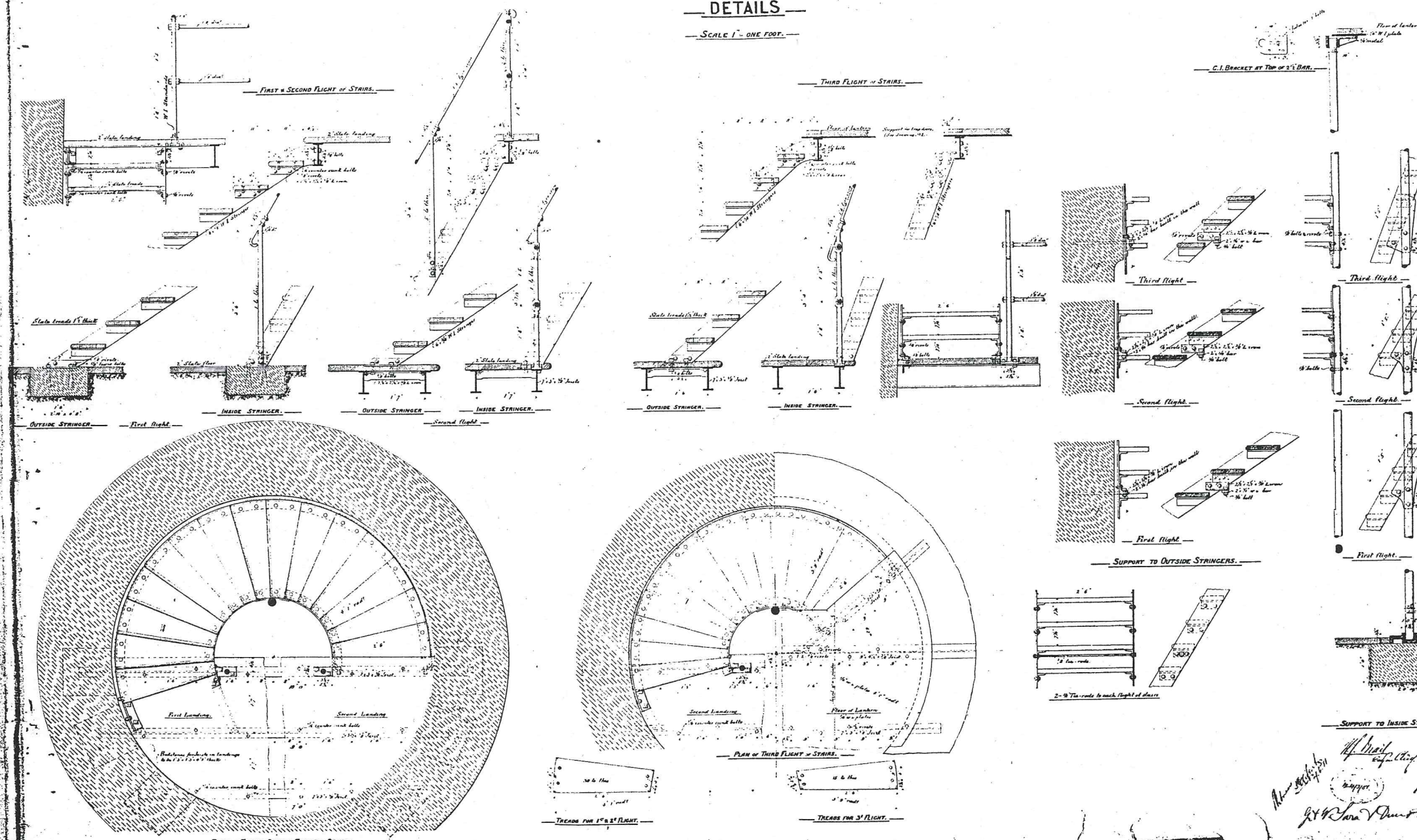
CORNET POINT

DETAILS

SCALE 1" = ONE FOOT.

CONTRACT N°

190
6888
388

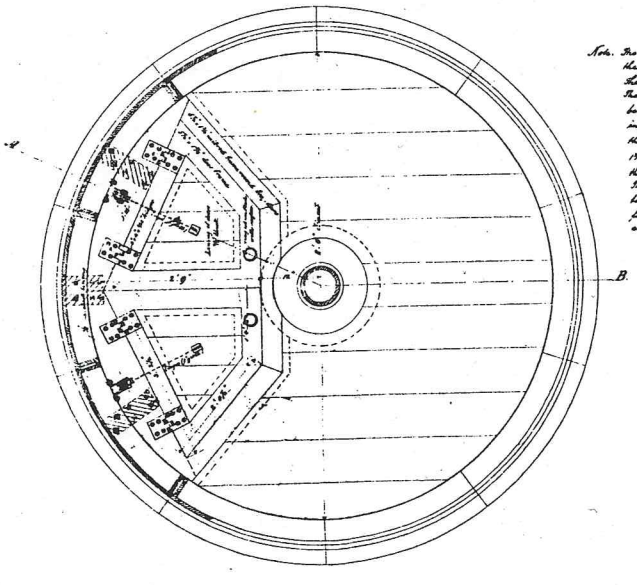
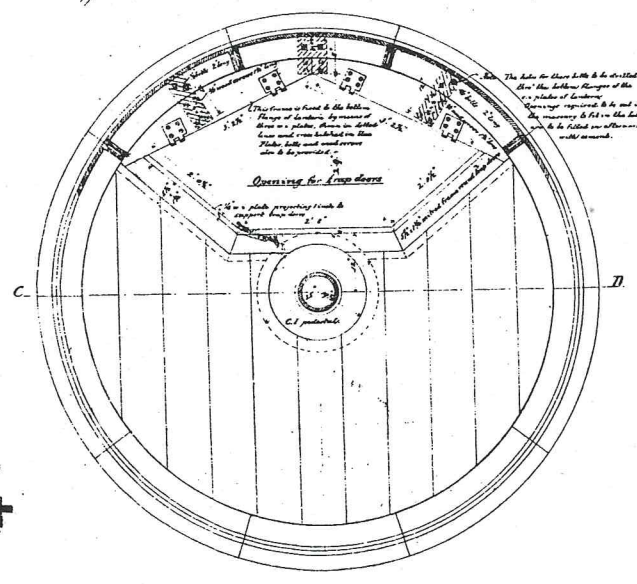
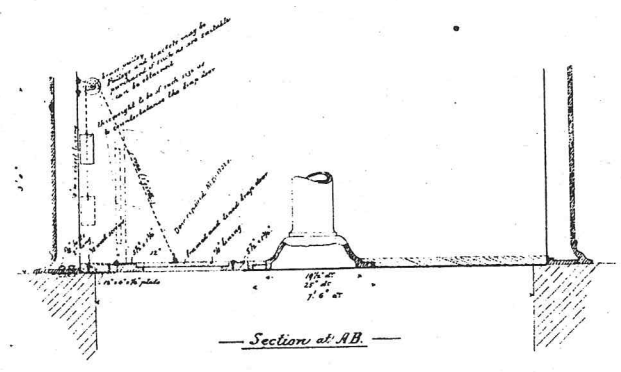
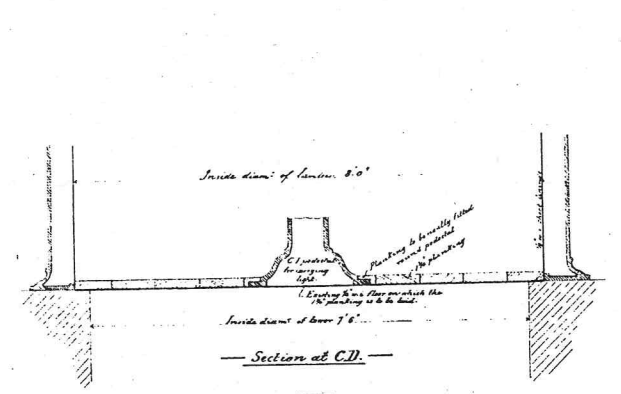


Handwritten notes and signatures:
New York City
J. H. ...
J. H. ...

6908
388

Corn Point Lighthouse
Trap doors and floor for lantern
Scale 1 inch to a foot.

(The work required to be done is shown elsewhere.)
This drawing to be forwarded to Corn Point with the material.



Note. The trap door and the floor to it of the lantern shall be made of heavy iron plate, the door to be properly framed and lined. The inside frame round door and the flooring to be made fitted to the iron plate and to the inside of the lantern, and to be fastened to the existing iron floor plate by 1/2" square 1/4" long bolts for which are already provided the iron plate. The inside surface and the joints of iron flooring to receive a coat of white lead paint before being fastened, the same surface to be painted perfectly smooth and to be lined with the trap door.

Forwarded to Mr. Mumford
at Corn Point by express
this work in hand
and having it forwarded
to Corn Point in the earliest
day is possible
17.1.12
1-158

And also fresh order for 221
19.1.12

