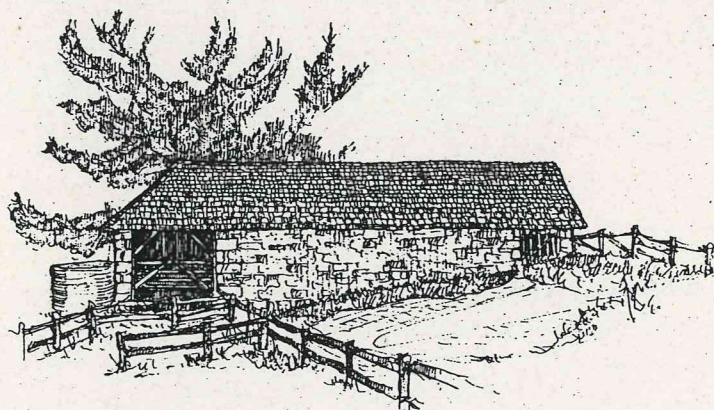


10150

Australia's Heritage Sketchbook



Keith Norris

LANSDOWNE PRESS
SYDNEY • AUCKLAND • LONDON • NEW YORK

1976

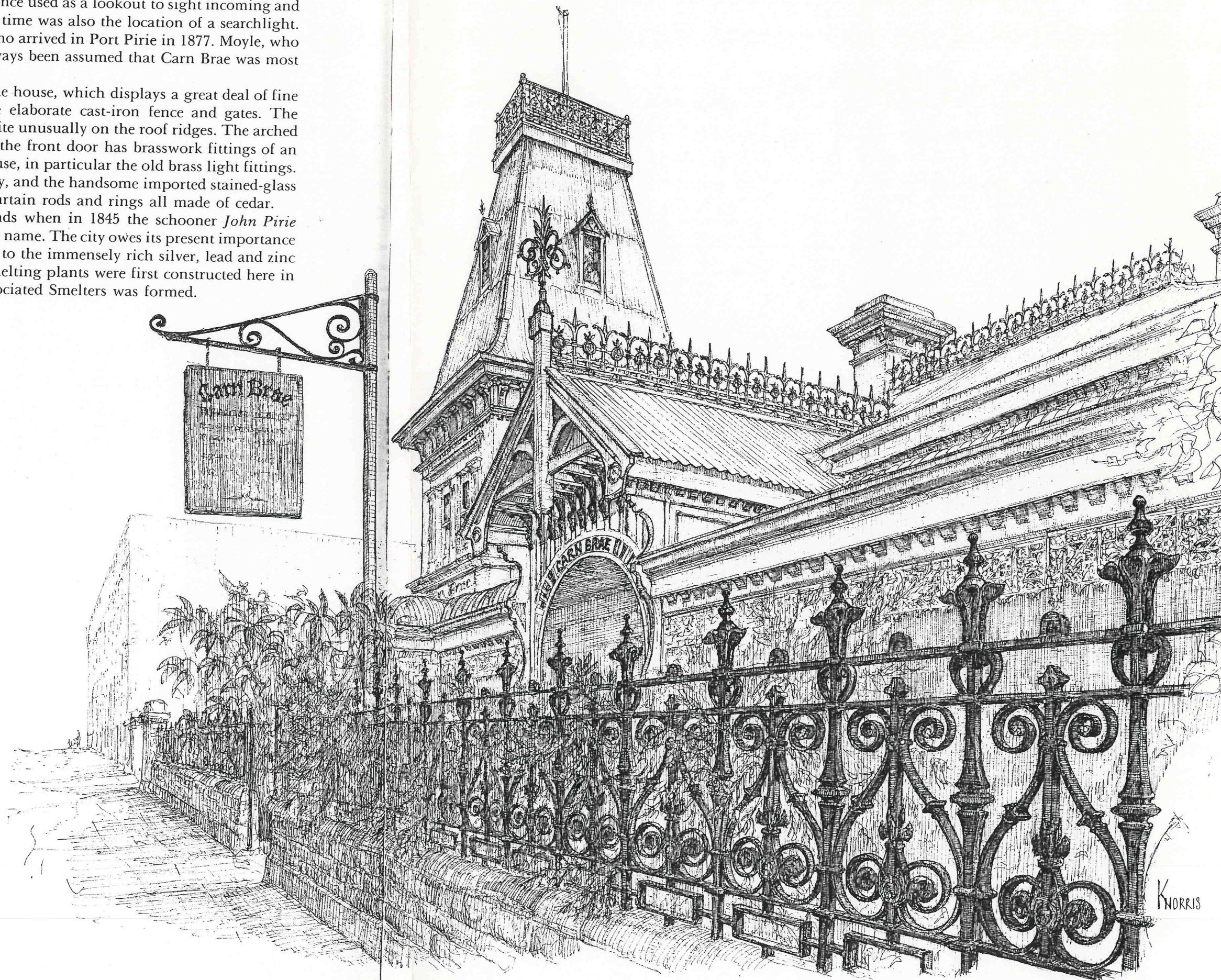
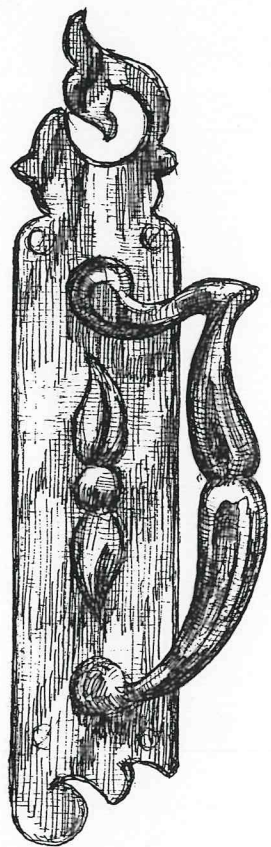
Carn Brae

Port Pirie

Carn Brae, Port Pirie's most important old historic home, is tucked away from general view in Florence Street, but its unusual tower can be seen from the Port Pirie River, some distance away. The tower, one of the highest points in the area, was once used as a lookout to sight incoming and outward-bound vessels in Spencer Gulf and for some time was also the location of a searchlight. The house was built for the family of W.H. Moyle, who arrived in Port Pirie in 1877. Moyle, who was born in 1834, came from Cornwall and it has always been assumed that Carn Brae was most likely named after Mount Carn Brae in Cornwall.

Little expense was spared in the construction of the house, which displays a great deal of fine detail-work. Particular note should be taken of the elaborate cast-iron fence and gates. The beautiful cast-iron lace on the verandah is repeated quite unusually on the roof ridges. The arched design of the entrance makes it most impressive and the front door has brasswork fittings of an unusually high quality that is echoed through the house, in particular the old brass light fittings. Ceilings and cornice mouldings are of exquisite beauty, and the handsome imported stained-glass windows are enhanced by wooden venetian blinds, curtain rods and rings all made of cedar.

Port Pirie was surrounded by desolate swamp lands when in 1845 the schooner *John Pirie* sailed up what is now the Pirie River to give the area its name. The city owes its present importance and development to the fact that it is the closest port to the immensely rich silver, lead and zinc deposits at Broken Hill in New South Wales. Lead smelting plants were first constructed here in 1888; later, in 1915, the company of Broken Hill Associated Smelters was formed.

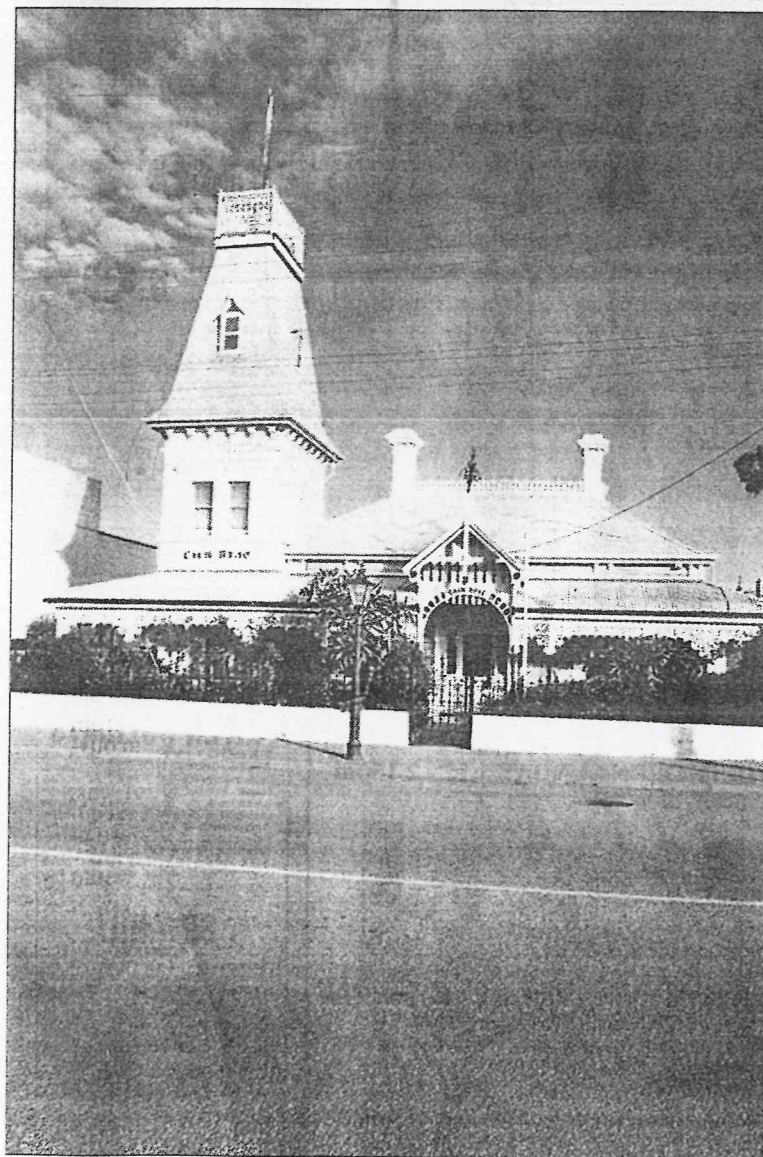


Ray White
REAL ESTATE
"Best in the Clare Valley & Mid-North by a Country Mile"
(08) 88 42 3099
326 Main North Road, Clare
Mark Forde a/h (08) 88 43 4385

The Advertiser

HILLS & COUNTRY

PINE LOG HOMES
SOLID LOG AND CYPRESS PINE TIMBER
HOMES INDIVIDUALLY DESIGNED FOR YOU
PINE LINE HOMES
9 Walla Street, Lonsdale
PH: 8384 4337
Open Sunday 1-4 p.m. Weekdays 9-5 p.m.



Carn Brae, going under hammer.



A section of the dining room.



Relaxing in the sitting room.



Leadlight a special feature.

■ Port Pirie

New life for mansion

THE DOORS of Carn Brae — one of Port Pirie's legendary tourist attractions — may open again in a different form. The fate of the stately turn-of-the-century mansion, in the heart of the city at 32 Florence St, will be decided at auction on Friday.

The 11am sale is expected to attract hundreds of buyers interested in the magnificent home and a sizeable portion of the antiques and knick-knacks collected over a lifetime by the former owners, the late Fred and Phina Young.

A recent clearing sale of furniture, and ruby and carnival glass, also drew hundreds of buyers from around South

Australia and interstate. A Mid-North landmark, Carn Brae, with its grand tower, return verandahs and wedding cake iron lacework, has State and Commonwealth Heritage and National Trust listing.

Built by the Moyle family (reputed to be descendants of the 14th-century pirate Bully Moyle) at the turn of the century, it celebrates the skills and handiwork of the tradespeople and artisans of a bygone era.

Among its many interior highlights is an extensive leadlight collection, featuring 20 hand-painted scenes and 26 separate panels, believed to have been imported from Germany. Com-

prising four bedrooms, a sitting room and a formal dining room, both adorned with beautiful cedar panels, a drawing room, a kitchen and two bathrooms, Carn Brae, named after a castle in Cornwall, could be retained as a house or it has the potential to be used as a bed-and-breakfast establishment or for commercial offices.

It is expected to sell for a price in the \$120,000-to-\$150,000 range.

Inspection is by appointment.

Rates: council, \$460 a year; SA Water, \$87.60 a quarter.

□ Inquiries: Alan Craigie, Myles Pearce Real Estate, Port Pirie, ph 08 8632 4077.

In the unexpected setting of industrial Port Pirie, on the doorstep of South Australia's vast northern mining and pastoral region, the gracious old town mansion "Carn Brae" with its ornamental tower and antique treasures is a welcome surprise.

"Carn Brae" restored by Fred and Phina Young, who have opened the mansion to the public and also live there, has a National Trust classification.

Visitors from all over Australia have admired its priceless German stained glass windows and doors with their hand-painted scenes and climbed the steep tower with its sweeping views over Port Pirie to the Flinders Ranges.

The romantic old home was built in 1909 by Edward Moyle, son of a pioneer Port Pirie business man.

Fred and Phina bought it in the 1960s with much of the original furnishings, adding their own collection of pieces.

Phina Young said, "We both fell in love with 'Carn Brae' as soon as we saw it. But it was in a dilapidated condition. We had to do a lot of expensive restoration."

"We had been in the catering business for many years and 'Carn Brae' was an ideal setting for wedding receptions and public functions. But we are now retiring and devoting ourselves exclusively to showing off 'Carn Brae' and its treasures to the public."



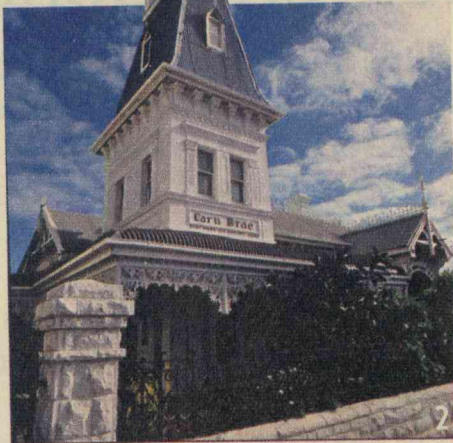
The house where time stands still

Richly carved overmantels and ornate plaster and gold leaf decorated ceilings add to the elegance of drawing and dining-rooms, each a miniature museum in itself, with collections of beautiful porcelain, coloured glass, paintings, silver and Italian walnut and cedar furniture.

With its huge table set for a formal dinner with heavy old silver and china, its massive sideboard and great fireplace, the dining-room needs only parlourmaids in streamered caps to bring it to life.

Adding to the charm of "Carn Brae" are intimate personal touches from long ago. In the main bedroom a wedding picture is framed in the veil the bride wore, a lace-trimmed chemise and children's smocks hang behind the door and an 80-year-old doll wears a child's christening robe as old as the doll.

Phina Young's pride and joy is her collection of about 1500 dolls, many of them old and rare. She is furnishing a



special dolls' room at "Carn Brae."

Keeping "Carn Brae" open to the public will be Fred and Phina's retirement project. Phina admitted there was a lot of work involved in looking after the house and its treasures. "We do it because we love it," she said.

Story: NOEL RAIT

1. The turn-of-the-century dining-room has been the scene of lavish entertainment.

2. "Carn Brae" with its ornamental tower.

3. An old-world bedroom is filled with personal treasures from long ago.

4. The front hall at "Carn Brae." German stained glass panels with hand-painted scenes decorate the front door and are a feature of the house.

5. Old kitchen canisters and utensils from the "Carn Brae" collection.

6. The drawing-room with its antique furniture and bric-a-brac.

Pictures: Milton Wordley.



3



4



5

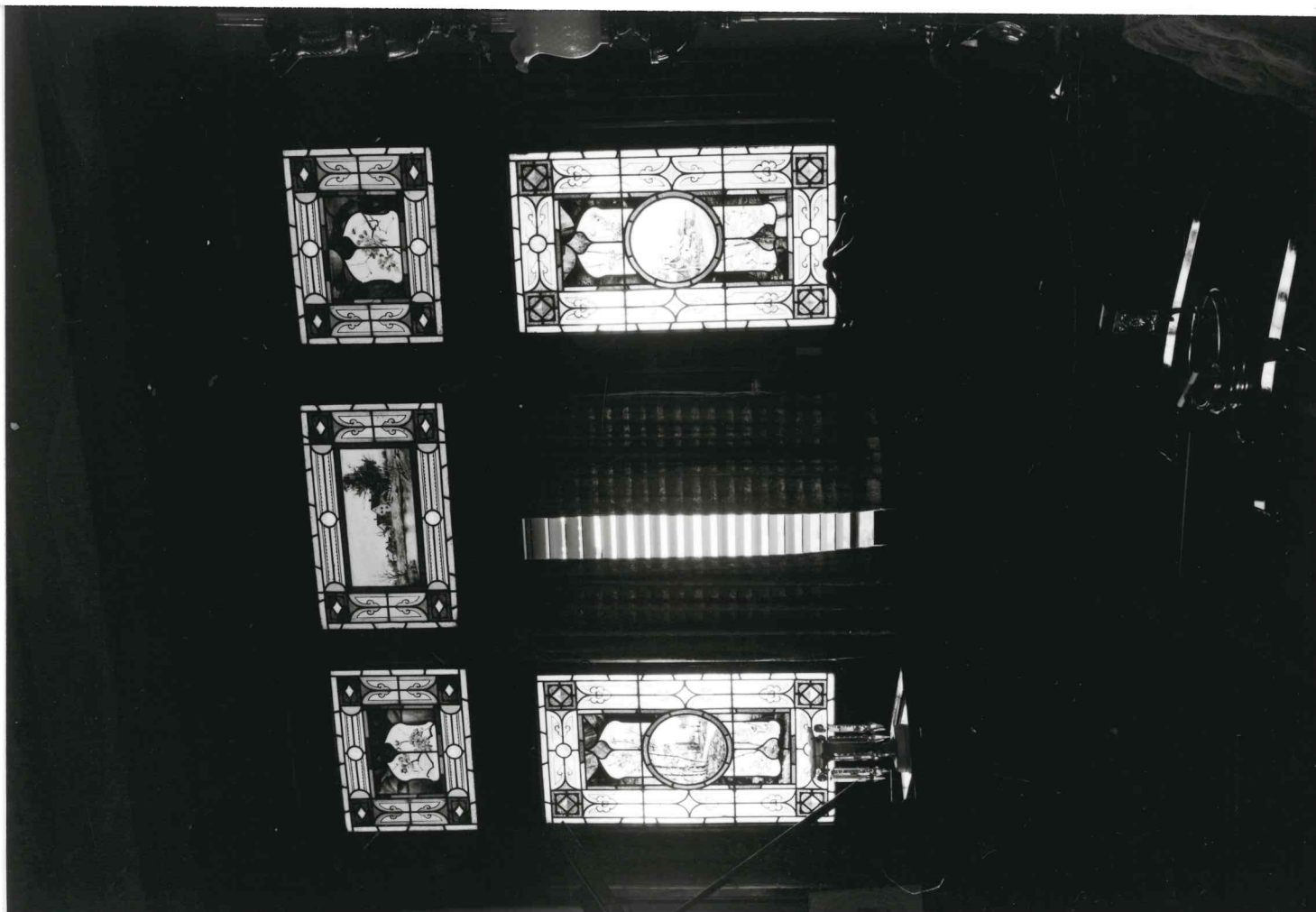




FILM 99
NO 9

"CARN BRAE" 32 FLORENCE ST
SOUTH EAST CORNER

PORT PIRIE
20-7-79





FILM 99 "CARN BRAE" TOWER FROM NORTH EAST
 NO 8

PORT PIRIE
 20-7-79

