

6532-10154

Police Station and
Court House Melrose
by Collwell and
Finch 1973

88/17/02

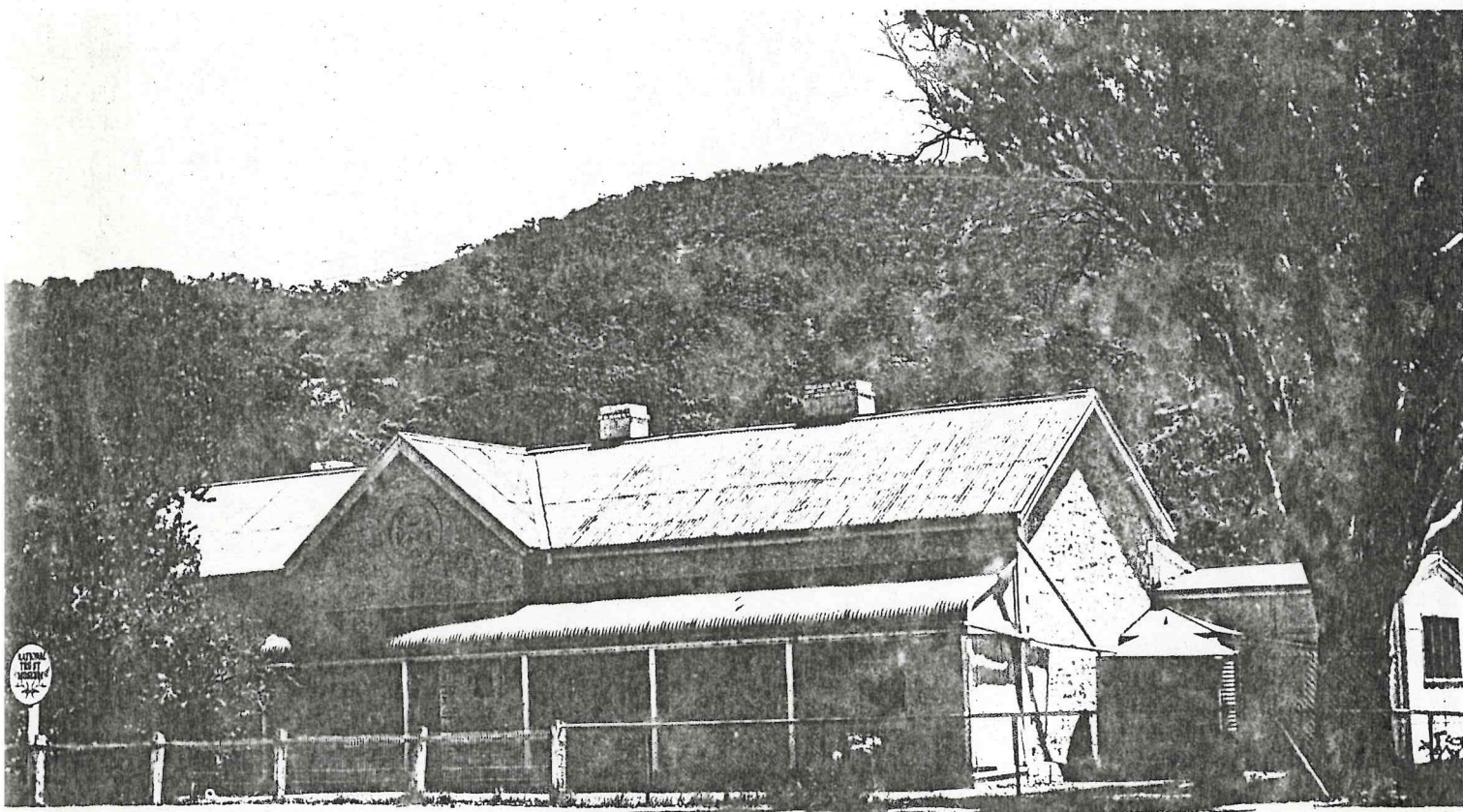
Collwell & Finch - 1973

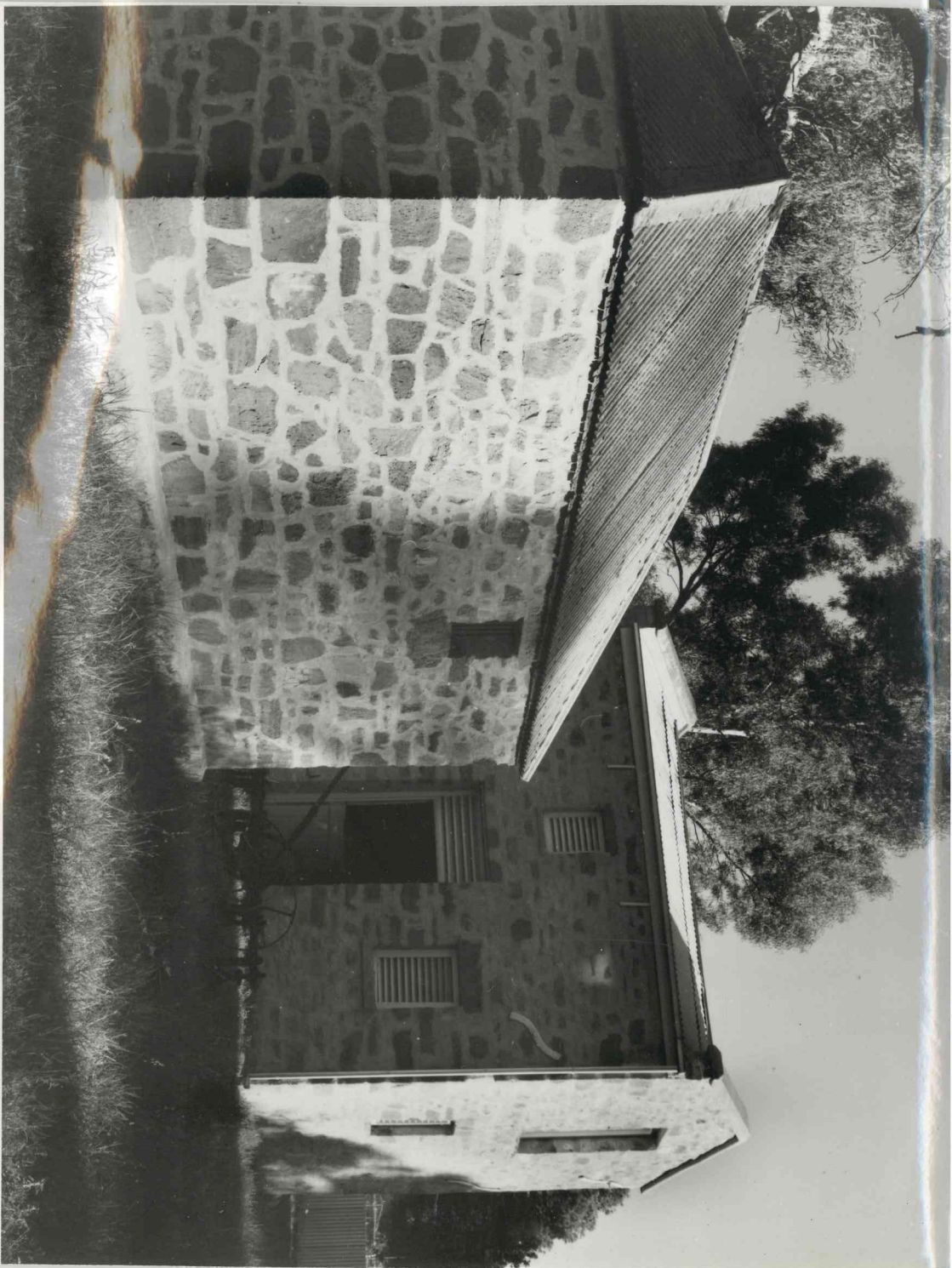
POLICE STATION and COURT HOUSE, Melrose

To combat sheep stealing and pilfering by Aborigines, the residents of the Mount Remarkable area brought pressure on the government for police protection. In 1848 a temporary police station was built by James Crawford for twenty pounds. It was twenty-six feet long and sixteen feet wide with a chimney of slabs cased with stone, and had three windows, a bark roof, and a rammed floor.

The station was usually manned by a corporal, two troopers, and an Aboriginal constable. For nine years, it was the most northerly police station in South Australia. By 1855 it was nearly in ruins, and was replaced by two pine log huts with a lock-up and lean-to for prisoners. Included was a room for the local court.

The present Melrose police station and court house, built in 1862 for £1,327 by W. Freeman and W. Richardson on the site of the old wooden buildings, now houses a folk museum which was officially opened on 6 April 1968 by the Northern Branch of the National Trust.

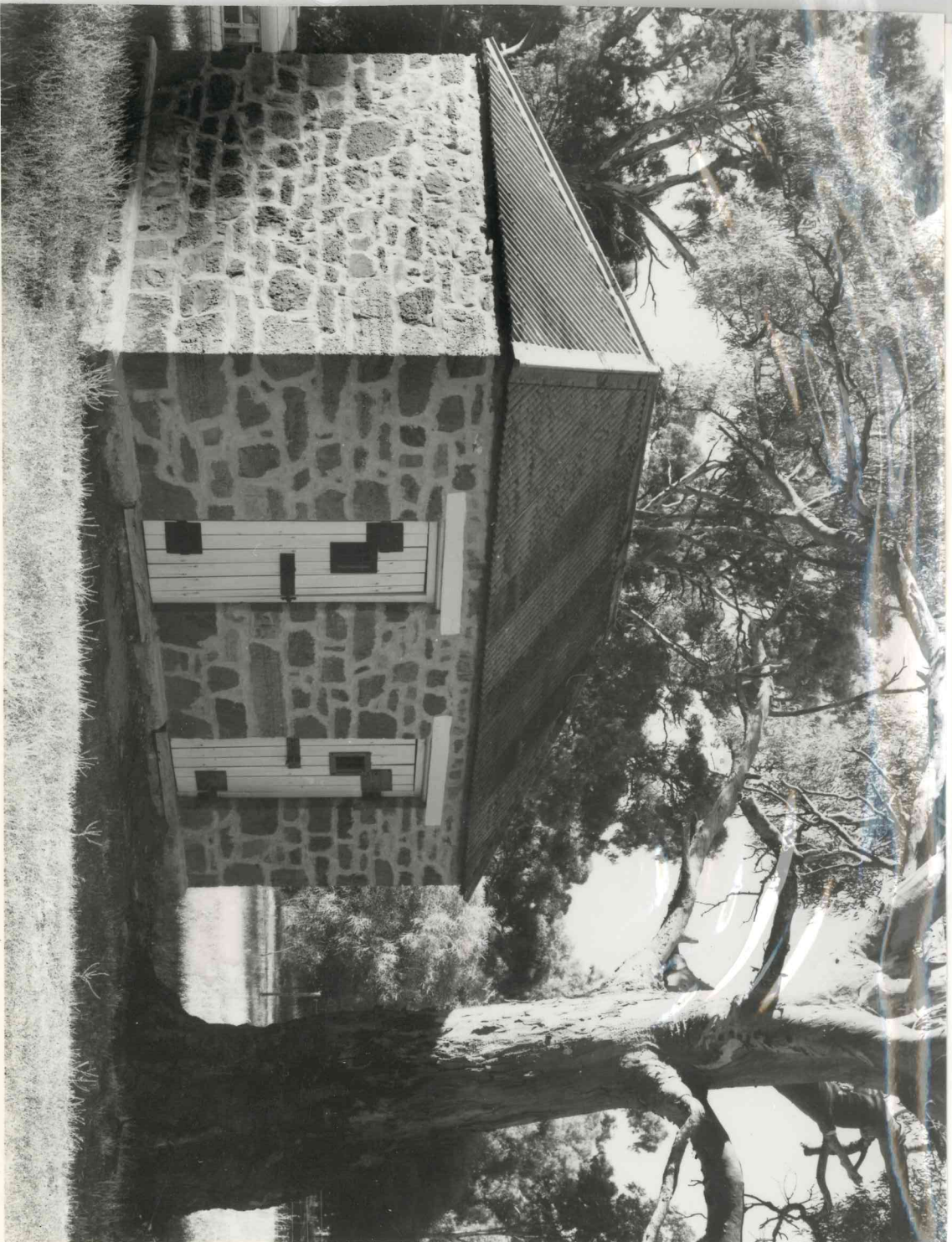




FILM 87
NO 5

LOCKUPS AND STABLES FROM
NORTH WEST

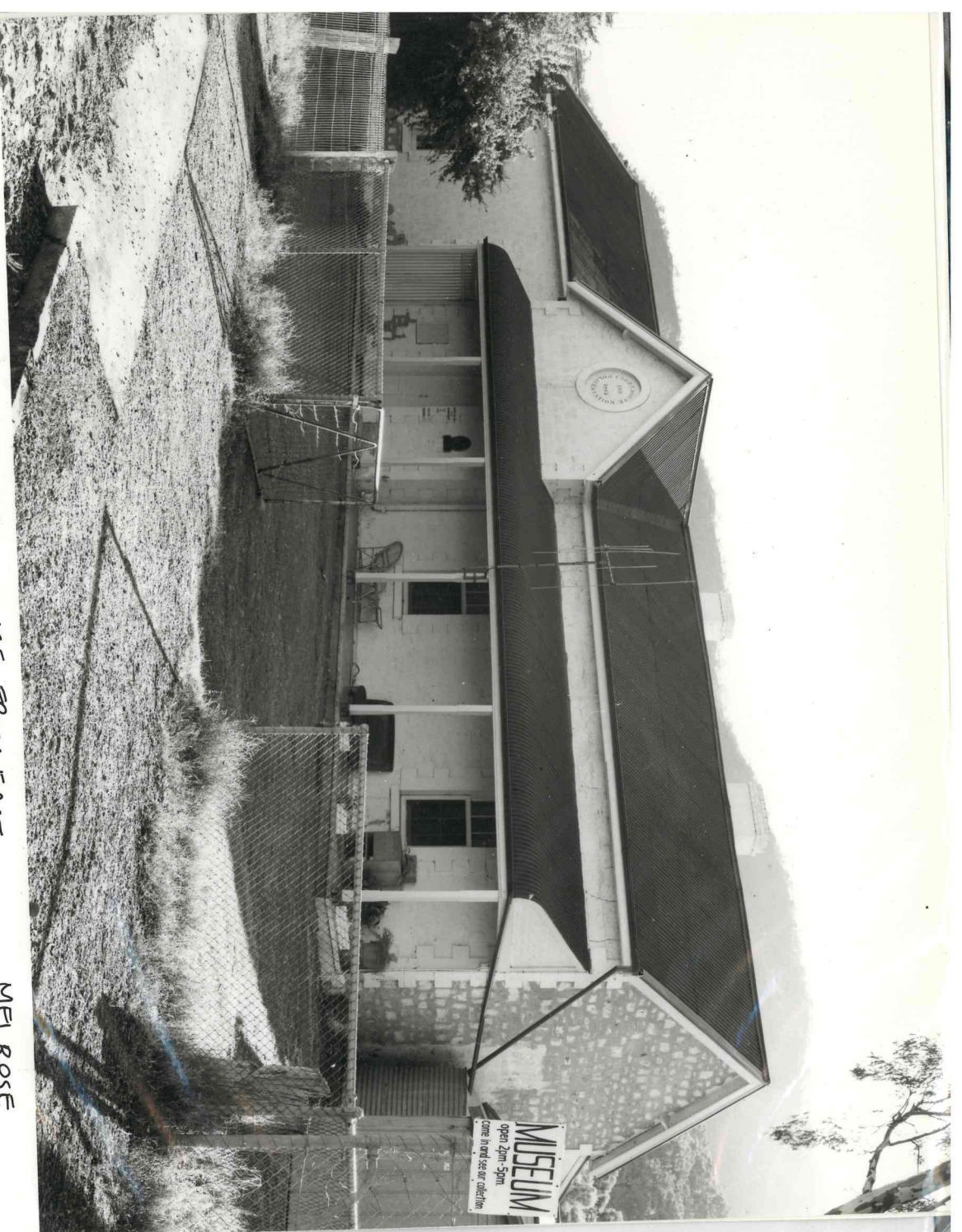
MELROSE
11-3-79



FILM 87
NO 3

OLD LOCKUPS

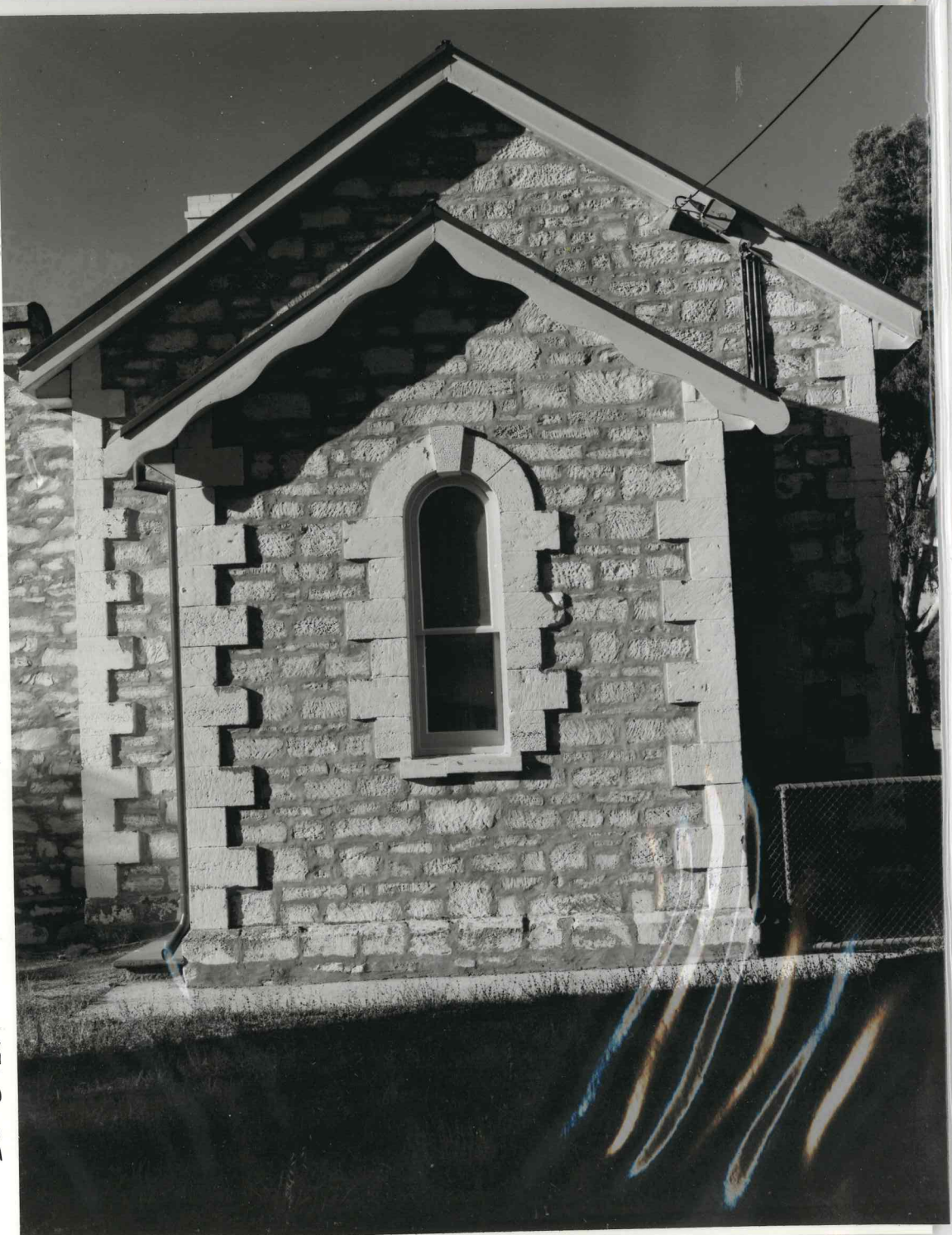
MELROSE
11-3-79



FILM 87
NO 2

FORMER COURT HOUSE FROM EAST

MELROSE
11-3-79



FILM 87
NO 7

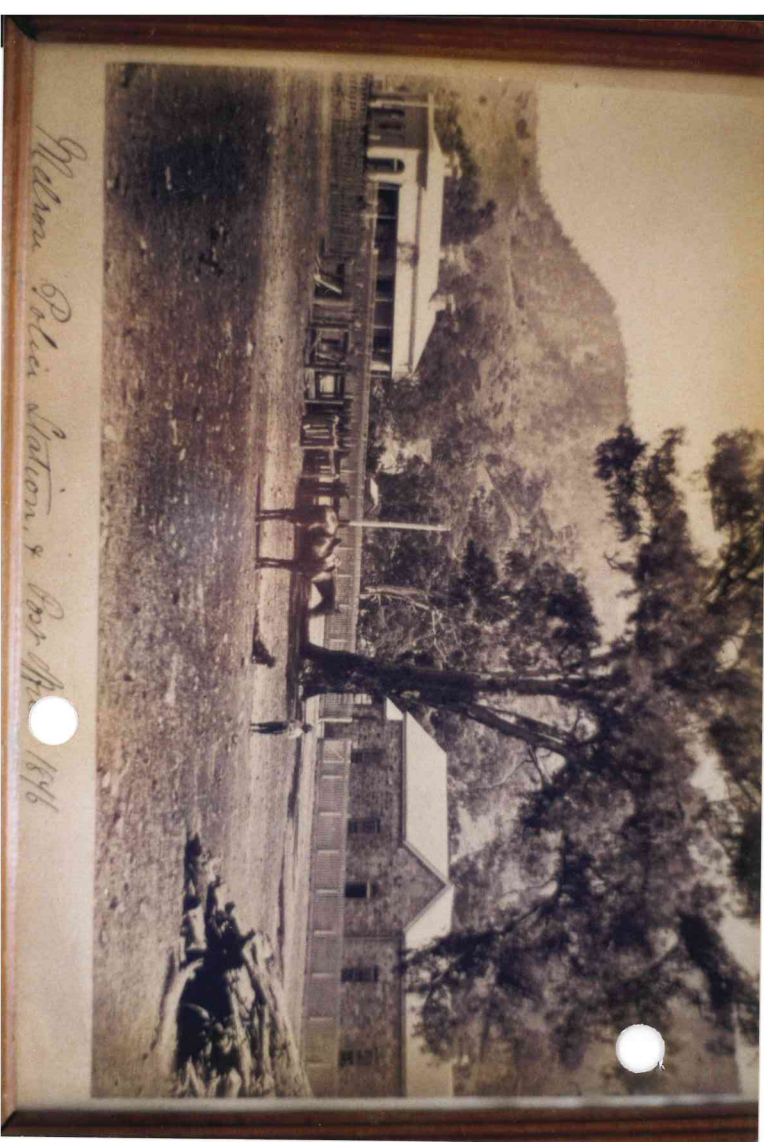
SOUTH WALL OF FORMER COURTHOUSE

MELROSE
11-3-79

0661

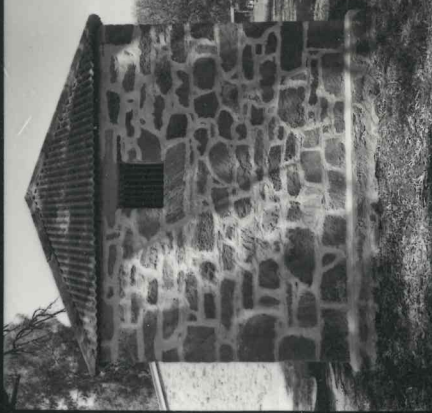


0661



Yellow River Station, Nov. 1896

337
DATE
20.1.1981
Lothar
Brasse



MELROSE POLICE STN & Ct. Hse etc. FILE No. 88.13.02

(1) 2 Cell lock up

(2) Stable, shed etc.

(3) Internal stables.

(4) Front Entrance

(5) Inscribed slate
-omission of date??

(6) Well

FILM
337
DATE
20.1.1981
Lothar
Brasse



WALLAROO POLICE STN & COURT HOUSE FILE No 30.10.01

(7) P.S. complex from back
Court Hse boundary wall

(8) Court Hse. back-from
South.

(9) Court House From N-W.

(10) P.S. from S E

(11) stables on R.H.S. single
mens' cts. behind.

(12) complex (P.S.) from back
C.H. boundary wall

7,8,9

10,11,12

FILM
338
DATE
19.1.1981
Lothar
Brosse

1,2,3



4,5,6



STONE HUT FILE NO. 87.27.01

(1) Thatched barns South of Hut

(2)

(3)

(4) Back elev. from N-W

(5) From N-E.

(6) Front Elevation of 'Stone Hut'

FILM
338
DATE
20.1.1981
Lothar
Brosse

7,8,9



10,11,12



MELROSE POLICE STATION, COURT HOUSE STABLES ETC. File No. 88.13.02.

(7) Cell block & stables etc.

(8) Double Cell block on R.H.S. (9) Melrose Along main st from North - Rd. stn on R.H.S.

(10) Cell window & Timber ceiling detail

(11) Front Elevation detail (12) Front - East. Elevation