
FORMER COACHING STABLES

WIL:001

Place Name and Address: *Former Coaching Stables, Fourth Street,
Wilmington

LOCATION: Fourth Street, Wilmington South Australia
5485
LOCAL GOVERNMENT AREA: District Council of Mount Remarkable
LAND DESCRIPTION: Lot 98, Hd Willochra, CT 5136/813

OWNER: SA Brewing Co Ltd
c/- Cobiach and Chapman, 1st Floor
26 The Parade West, Kent Town South
Australia 5067

REGISTER STATUS: Registered 23 September 1982
Heritage South Australia File No.: 10177

PHOTOGRAPH: FP 19 - 12



Former Coaching Stables, Wilmington

FORMER COACHING STABLES

WIL:001

DESCRIPTION

A two storeyed stone building with rendered surrounds, located behind the Wilmington Hotel. The stables have central doorways on both the ground and upper floors and a small window located on either side of the doorway. The building has a gabled roof.

STATEMENT OF HERITAGE VALUE

Of significance as a substantial building associated with a travellers' inn located on one of the major roads to the north of South Australia. The former stables reveal the importance of providing facilities for the animals, mainly horses that travellers used on their northward journeys.

HISTORY

The first licensee records for the still operating Wilmington Hotel date back to 1880, when the lessee was A Rehder.

The town of Wilmington is located on the road from Port Augusta through Horrocks Pass to the hinterland. A hotel in this location would have serviced travellers about to make the journey north. Most of those travellers would require a stabling and other facilities for horses and/or other animals.

REFERENCES:

Heritage South Australia File 10177.

Hoad, JL (Bob), *Hotels and Publicans in South Australia 1836 - 1984*, Australian Hotels Association (South Australian Branch) and Gould Books, Adelaide, 1986, pp. 687-88.

Former Coaching Stables, Wilmington 10177

News

Volunteers 'rescue' stables

Wilmington

Wilmington's State-listed Heritage Cobb and Co coaching stables are undergoing restoration work at the hands of volunteers from the local Progress Society.

But according to a Wilmington Progress Society member, Marie Storey — one of the driving forces behind the project — the work is more of a rescue bid.

The work needed to be done this winter or the building would have

been beyond salvage," Mrs Storey said.

"The project is being carried out in a couple of stages, with restoration of the front being the major work, and we expect this to be completed by about the end of this month."

She said up to about 12 society volunteers had helped by collecting stone to be used in the restoration work by a professional stone-mason, Norm Adams.

The volunteers will also be peeling and preserving the timber, as

well as carrying out drainage and gutting work, and desalting the area, she said.

Funding for the first stage of the project has come from a \$15,000 Heritage SA grant, together with another \$1500 from the Mount Merrivale District Council.

Mrs Storey said a further grant would be sought for the second stage of the project, which represented about a third of the restoration work, and involved repairing minor

cracks in the side and rear walls.

"We are not sure exactly how old the stables are, but we know the (adjacent) house was built in 1870 and the stables were built after that," she said.

"These are photos of the hotel showing the stables in the background, as they must have been built somewhere between 1870 and 1900."

The inside of the building is in a good state, and still has the original — cast-iron — flooring and rangers.

Mrs Storey said the stables would be used to house museum artefacts — including old saddlery gear and a cart — in keeping with the theme of the building.

It would eventually be open for guided tours, she said.



Government of South Australia
 Department for Environment
 and Heritage

Fire Management Plan

Southern Flinders

As Part 100 is extended to members of the public, to register their interest in a Fire Management Plan being developed by DEN for the Flinders of the Southern Flinders Ranges. The plan covers the following reserves:

- Mount Brown Conservation Park
- The Duchichen's 1980 Conservation Park
- Mount Knappe and National Park (including the Rappert's Rock)
- Flinders Range Conservation Park

Calling for registration of interest is one component of the consultation process during the development of a Fire Management Plan.

People registering their interest will receive 2 copies of the final Fire Management Plan for comment available in early 2004. Commenting on the draft plan will also provide opportunities for individuals and groups to raise any issues or areas of concern. They may also be contacted to discuss other issues relevant to their interest in the plan.



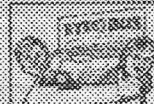
Government of South Australia
 Primary Industries and Fisheries SA

ATTENTION ALL CATTLE PRODUCERS From July 1 2005

All cattle leaving the property must be identified with a MUD device.

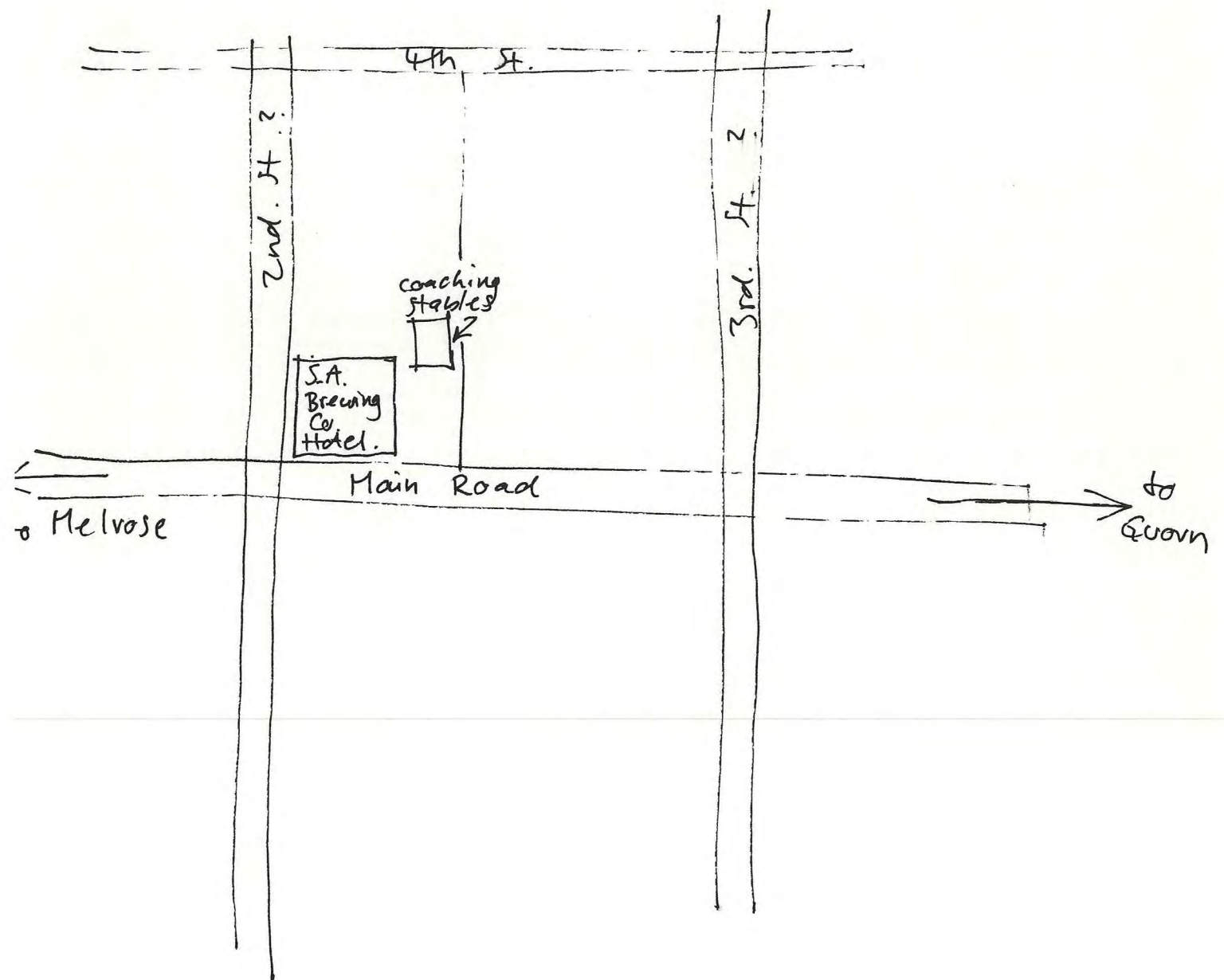
Exemptable apply to:

RESTORATION: Local volunteer, Chris O'Neil, manhandles one of the heavy stones being used in the restoration of Wilmington's old Cobb and Co coaching stables. According to a Wilmington Progress Society spokesperson, Marie Storey, the restoration work needed to be carried out this winter or the building would have been beyond salvage.



EYE-BUS
 EYE-BUS
 Register South Hwy 10 2004
FOR APPOINTMENTS

Wilmington



State Library of South Australia : South Australiana database

[Return to Catalog](#)

TITLE: Wilmington

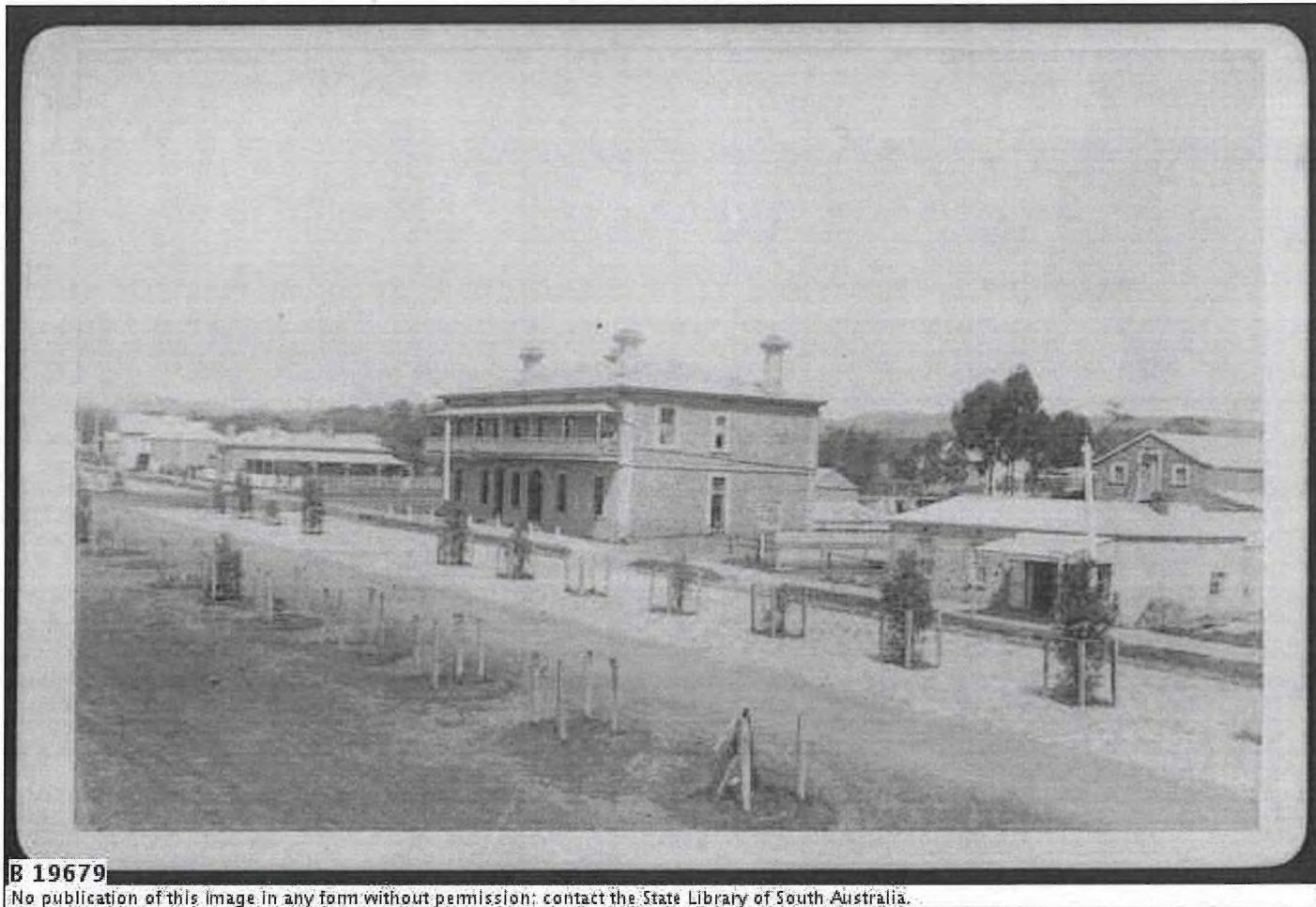
10177

Image record

If you can provide additional information for this image, please [tell us](#).

Copies of this image may be made for private research/study. You may [order](#) a high quality photographic copy.

Any other use requires [permission](#) from the State Library of South Australia.

**B 19679**

No publication of this image in any form without permission; contact the State Library of South Australia.

TITLE	Wilmington
DESCRIPTION	Post Office and Globe Hotel.
DATE	ca.1890
Size of Master Image	3261 x 2172 pixels, 20.3 MB

TIME TABLE.

DEPARTURE OF

JOHN HILL & CO.'S



ROYAL MAIL COACHES.

CHIEF BOOKING OFFICE—

King William Street, Adelaide.

BRANCH BOOKING OFFICES—

Strathalbyn,

Main Street, Clare,

And at Laura.

ADELAIDE TO CALLINGTON—From Adelaide to Nairne by the 2.30 afternoon coach, thence by coach leaving Nairne 6.45 p.m. daily.

CALLINGTON TO ADELAIDE—Leaves Callington daily at 4.40 a.m., passengers changing into other coach on arrival at Nairne.

ADELAIDE TO KADINA—Daily. From Booking Office, Adelaide, at 7 a.m., to Port Wakefield, and thence by train to Kadina, Wallaroo, Green's Plains, or Moonta.

ADELAIDE AND KINGSTON, en route for Mount Gambier, Narracoorte, Penola, and overland to Victoria—Daily, from Booking Office, at 6.45 a.m.

ADELAIDE AND LOBETHAL—Twice daily, 6.45 a.m. and 2.30 p.m. From Booking Office, proceed by Nairne coach to Grunthal, thence by branch coach via Balhannah and Woodside.

LOBETHAL AND ADELAIDE—Twice daily. Leaves Lobethal at 5.50 a.m. and 1.45 p.m. for Grunthal, &c.

ADELAIDE AND MANNUM—By coach at 2.45 p.m. from Adelaide for Mount Pleasant. On arrival at Blumberg take the branch coach for Mannum via Palmer.

FROM MANNUM TO ADELAIDE—Coaches leave daily in time to catch coach from Palmer.

ADELAIDE AND MEADOWS—From Adelaide Booking Office at 2.45 p.m. via Belair, Coromandel Valley, Cherry Gardens, Clarendon, Kangarilla, Dashwood's Gully, &c.

LEAVES THE MEADOWS FOR ADELAIDE daily at 6 a.m.

ADELAIDE AND MILANG—Twice daily, from Booking Office (mornings 6.45, afternoons 2.30), via Crafers, Aldgate, Warland's, Echunga, Battunga, Macclesfield, Strathalbyn, and Belviders.

LEAVES MILANG FOR ADELAIDE—Twice daily, at 3.0 a.m. and 11 a.m.

ADELAIDE AND MOUNT PLEASANT—Twice daily, from Booking Office (mornings 7.0, afternoons 2.30), via Modbury, Teatree Gully, Inglewood, Chain of Ponds, Gumeracha, and Blumberg.

LEAVES MOUNT PLEASANT FOR ADELAIDE—twice daily—mornings at 6.0, afternoons at 2.0.

ADELAIDE AND MOUNT TORRENS—Daily, from Booking Office, at 2.30 p.m., by coach direct, via Grunthal, Balhannah, Woodside, and Charleston.

MOUNT TORRENS TO ADELAIDE direct, daily; leaves Mount Torrens at 5.40 a.m.

ADELAIDE TO NAIRNE—Twice daily, from Booking Office (mornings at 6.45, afternoons at 2.30), via the Eagle, Crafers, Aldgate, Cox's Creek, Hahndorf, Mount Barker, and Littlehampton.

FROM NAIRNE TO ADELAIDE—Twice daily, 6.20 a.m. and 1.45 p.m.

ADELAIDE AND NORMANVILLE—Once daily. Proceed by Willunga coach (afternoon only) as far as Noarlunga; thence by branch coach via Bennett's Hill, Aldinga, Sellick's Hill, and Myponga.

FROM NORMANVILLE TO ADELAIDE—Once daily, mornings, at 3.0.

ADELAIDE TO PALMER—By coach at 2.45 p.m. from Adelaide for Mount Pleasant; on arrival at Blumberg take branch coach for Palmer.

FROM PALMER TO ADELAIDE—Coaches leave Palmer daily (mornings), at 11.30 a.m.

ADELAIDE AND WELLINGTON—Once daily. Proceed by Milang coach leaving Adelaide at 6.45 a.m. as far as Strathalbyn; thence take branch coach via Belvidere, Langhorne's Creek, and Wyley's.

WELLINGTON TO ADELAIDE—Leaves Wellington daily at 6.30 a.m.

ADELAIDE AND WILLUNGA—Twice daily, from Booking Office. Leaves morning 8.0, afternoons 2.30, via Sturt, Tapley's Hill, Reynella, Morphett Vale, Hackham, Noarlunga, and McLaren Vale.

FROM WILLUNGA TO ADELAIDE—Twice daily, mornings at 6.0, afternoons at 3.

ANGASTON VIA MOUNT PLEASANT—Leaves Booking Office daily at 7.0 a.m. via Springton and Eden Valley.

CLARE AND SADDLEWORTH—Twice daily, from Clare, at 6.0 a.m. and 2.40 p.m., via Seven Hills, Penwortham, Watervale, Leasingham, and Auburn, arriving at Saddleworth in time to catch train.

SADDLEWORTH TO CLARE—From Saddleworth on arrival of each train from Adelaide.

TO CRYSTAL BROOK—Daily. From Adelaide by first train to Saddleworth or Farrell's Flat Station; thence by coach to Clare, and thence by coach from Clare at 3 p.m. via Rochester, Koolunga, Red Hill, and the Broughton.

FROM CRYSTAL BROOK daily, at 8 a.m. to Clare, and thence by coach to Saddleworth or Farrell's Flat in time for train.

FARRELL'S FLAT TO CLARE daily on arrival of first train from Adelaide.

CLARE TO FARRELL'S FLAT daily from Clare at 3.30 p.m.

FREELING TO ANGASTON—Twice daily. Leaves Freeling on arrival of each train from Adelaide, via Daveyston, Greenock, and Nuriootpa.

ANGASTON TO FREELING—Twice daily, leaving Angaston 4.50 a.m. and 2.25 p.m.

FREELING AND BLANCHETOWN—Bi-weekly. Leaves Freeling on arrival of morning train from Adelaide on Tuesdays and Fridays in each week.

FREELING AND TRURO—By morning coach from Freeling to Nuriootpa, thence by branch coach to Truro.

TRURO TO FREELING—Leaves Truro daily at 4.30 a.m.

PORT AUGUSTA—Daily from Adelaide per first train to Hallett; thence by coach to Jamestown, Gladstone, Laura, Stone Hut, Wirrabara, Melrose, Wilmington, Horrocks's Pass, Stirling North, &c.

LEAVES PORT AUGUSTA FOR ADELAIDE daily at 7 p.m. via Laura, leaving Laura at 6.30 a.m. daily.

FROM PORT WAKEFIELD TO ADELAIDE—Daily. Leaves Port Wakefield at 11 a.m.

HALLETT AND JAMESTOWN—Leaves Hallett for Jamestown via Canowie and Belalie on the arrival of morning train from Adelaide daily at 1.15 p.m.

LEAVES JAMESTOWN FOR HALLETT 11.50 a.m. daily.

TEROWIE AND OKOROO—Leaves Terowie for Okoroo via Yongala, Yatina, Black Rock Plains, on the arrival of morning train from Adelaide daily; Jamestown and Mannanarie on Monday, Wednesday, and Friday at 4.30 p.m., returning alternate days at 8.40 a.m.

10177