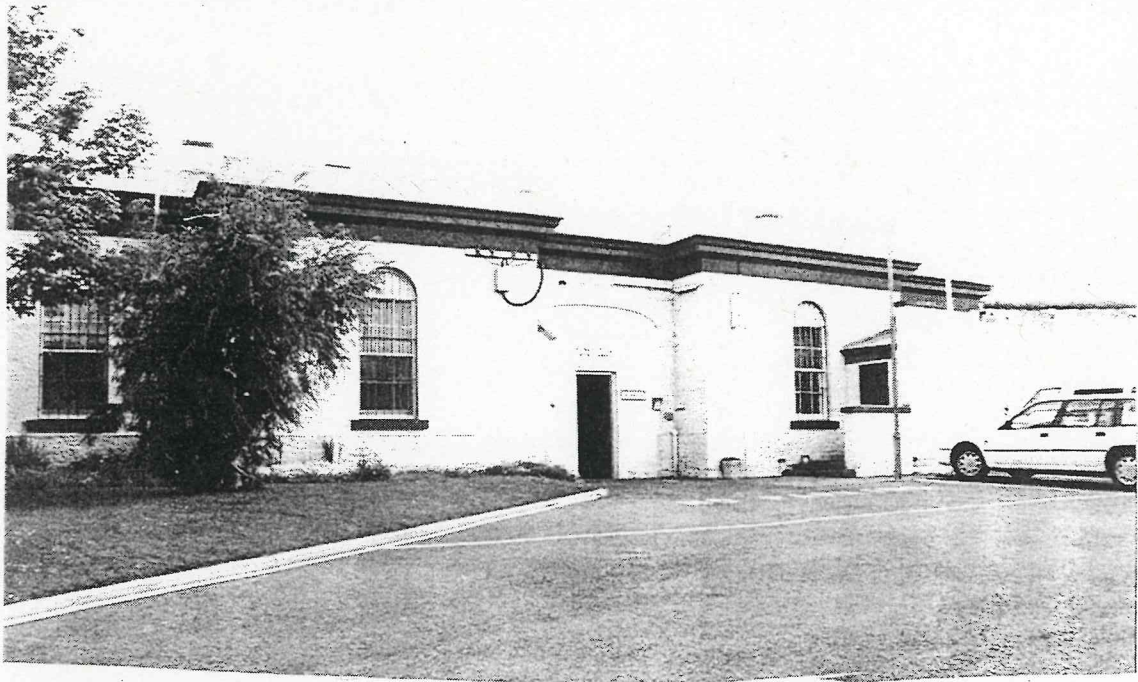


MOUNT GAMBIER GAOL 45 WEHL STREET SOUTH



C.T: 985/30 (Part Section 1100)

HERITAGE LISTING: State Heritage Register

STATEMENT OF HERITAGE VALUE: This Gaol building represents the consolidation of Government facilities and services within the Mount Gambier district and the spread of law and order to these newly settled areas. The building was completed in 1866.

RECOMMENDATION: Retain in the State Heritage Register.

ASSESSMENT:

Historical - Tenders for a new gaol in Mount Gambier were called in 1863 as there were no suitable facilities in which to detain law breakers prior to that time. Long term prisoners were sent to the Adelaide Gaol from Mount Gambier before the construction of the Mount Gambier Gaol.

Plans were drawn up by the Colonial Architect's Office and the builders for the gaol were J Goss, W Allison and T Potter. The overall dimensions of the first building were 190ft x 160ft and outside walls enclosed more than an acre of ground. The gaol was built of pink and grey dolomite from Tantanoola, 23 miles away from the site. The building has a typical symmetrical front facing the entrance drive from Margaret Street with a now painted detailed cornice and a projecting tuck pointed low parapet concealing the roof structure.

Extensions were made to the gaol in 1912 and in 1963 when 12 modern style cells were erected. A new gaol is being constructed out of the Mount Gambier city area and when this is fully functional the 1866 Mount Gambier gaol will be decommissioned.

MOUNT GAMBIER GAOL
45 WEHL STREET SOUTH (cont)

Site Record

Gaol - Mount Gambier Gaol
45 Wehl Street South
Mount Gambier SA 5290

Location	45 Wehl Street South, Mount Gambier
Description	Single storey stone gaol building with enclosed gaol yard behind stone wall
Boundary	Gaol reserve extends to Wehl Street, with access from Margaret Street. It is adjacent to the Primary School, Infants School and Sports Field Reserve within the triangle of Margaret Street, Wehl Street, O'Halloran Terrace.
Land Description	CT 985/30
Local Government	City of Mount Gambier
Owner	Department of Correctional Services
Use	Gaol
Condition	Generally sound
Other Assessments	Heritage Survey of the South East, Region 6 Les R Hill, <i>Mount Gambier - the City around a Cave</i>
Heritage Status	State Heritage Register

South Australian
Heritage Act 1978-80:

HERITAGE SURVEY ITEM IDENTIFICATION SHEET

REGION 6
SOUTH EAST

Item No. : MTG:006
ITEM NAME: Mount Gambier Gaol.
Former or other names:

LOCATION:

Address: Margaret Street,
Mount Gambier

Allotment:

Section :

Hundred : Blanche

County : Grey

L.G.A. : Mount Gambier

S.H.P. Region: 6

A.M.G., Ref. Z: 54 N: 5812550
E: 480250

TYPE OF ITEM:

Description: Gaol

Subject: 3.05

Period: 1860-1880

Date: 1865 -

Condition: Well Kept

Architect: Col. Arch. - William Hanso

Builder: J. Goss, W. Allison & T. Pot

STATUS State Heritage List: Register
National Estate : Listed
National Trust : Classifi

HERITAGE SIGNIFICANCE

RECOMMENDATION: State

Description:

Parapet wall of tuck-pointed dolomite with massive corbelled string course, plinth to sill height, all painted white. Semicircular arched fanlights over double hung windows. Small raked portico over front door surrounded with fanlight and sidelights.

The building was of Tantanoola dolomite and was opened April, 1866. Major additions and alterations occurred in 1912 and later this century. There are eleven cells.

Report Text:

REFERENCES: L. Hill, "Mount Gambier, the City around a Cave" pp.31,38,1
S. Game, "National Estate Study, Mount Gambier" p. 59

Verbal: Mr. Stratman (Keeper)

PHOTOGRAPHS:

Slide No :

Film No : 21

Negative No: 24,25,26

Archival No:

DANVERS ARCHITECTS Date: 1983

