

South
Australian
Heritage
Act
1978-80

HERITAGE SURVEY

ITEM IDENTIFICATION SHEET

HERITAGE SURVEY REGION 5

Item Ref. No. 5

ITEM NAME: Former Overland Corner Hotel
Former or other

Office Use
ITEM No.
DOCKET No.

HERITAGE SIGNIFICANCE

The Overland Corner Hotel is the oldest and most original of the several inns which were built along the early overland route between Adelaide and Sydney. It was built by John Chambers in 1859 and first licensed by William Brand. The licence changed hands several times until 1897, when it lapsed though it continued to act as a comfort stop for travellers until the highway between Morgan and Barmera was re-aligned and sealed in the mid-nineteen sixties. William Napper was the licensee for a time after 1876. The former hotel passed to the National Trust of South Australia in December 1965. The Hotel is of additional interest because of its construction from the local limestone. The south and east wings were the first parts of the hotel to be built. One of the Brand children - Walter - is buried in the small graveyard which is near the hotel.

LOCATION
Address

Town Overland Corner
Postcode
Section 75
Hundred Parcoola
County
L.G.A. Barmera
S.H.P. Region 5
A.M.G. Ref. 6929-I
54 43900 622060

SUBJECT

4.6

PERIOD
State

Study Area
1853-1880

REFERENCES

National Trust of S.A., 105.
Woolmer, The Barmera Story: A History of Barmera and District
pp 11-13
Cooper (ed) A History of the Overland Corner Hotel

TYPE OF ITEM

LAND Natural feature ☐
Historical site ☐
Historical Gdn. ☐

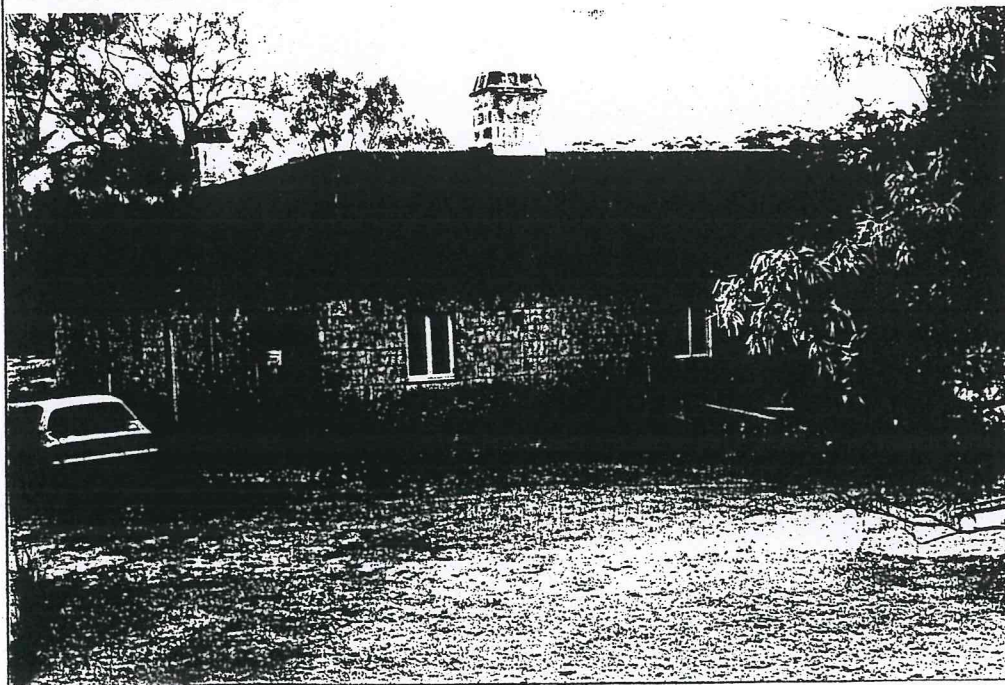
BUILDING ☒

STRUCTURE ☐

PHYSICAL CONDITION ☐

Verbal George Woolmer, 1983
Archival photographs

PHOTOGRAPH Film No. 808 Negative No. 8
Direction of view to W



STATUS

Reg. of State Her. Items
Reg. ☒ Interim L ☐
Nominated ☐
National Estate
Reg. ☒ Proposed L ☐
National Trust
CL ☒ RL ☐ File ☐
Other

RECOMMENDATION

(A) State ☒ (B) Local ☐

PREPARED BY

HERITAGE INVESTIGATIONS

Date: 1983

IIS/D4/25.11.81

FILM 71
NO 3



Ca 373
SA 914
1-88.56

SVY
854
SA



Overland Corner
Hotel

563/2/209-1.





FILM 71
NO 6

VIEW ALONG ROAD PAST HOTEL
FROM EAST

OVERLAND CORNER
2-3-79



FILM 71
NO 7

NORTH WALL OVERLAND CORNER HOTEL

OVERLAND CORNER
2-3-79





FILM 71
NO 5

VIEW FROM EAST OF HOTEL

OVERLAND CORNER
2-3-79



FILM 71 INTERIOR VIEW TOWARDS
No 3 FRONT BAR OF HOTEL

OVERLAND CORNER
2-3-79