

South
Australian
Heritage
Act
1978-80

HERITAGE SURVEY
ITEM IDENTIFICATION SHEET

PROJECT
HERITAGE SURVEY REGION 5

Item Ref. No. 24

ITEM NAME: Napper's Accommodation House
Ruin
Former or other Napper's Lake Bonney Hotel

Office Use
ITEM No.
DOCKET No.

HERITAGE SIGNIFICANCE

The land on which the inn was built was alienated in December 1862 and transferred to William Napper, a licensed victualler, in February 1863. It was presumably built soon thereafter. The hotel was built of local limestone, but has long since fallen into disrepair, and is now but a ruin. However, it remains of considerable historical significance because of its association with the early European settlement of the area. Napper first came to the area as a timber-cutter in 1855. He is buried, with his wife in a paddock near the remains of the inn. The ruins were dedicated as a historic site in December 1963 - the centenary year of the inn.

LOCATION

Address Morgan Road,
Lake Bonney
Town nr Barmera
Postcode
Section 419
Hundred Out of Hundreds
County
L.G.A. Barmera
S.H.P. Region 5
A.M.G. Ref. 6929-I
54 44690 621580

SUBJECT

4.6

PERIOD

State

Study Area
1853-1880

REFERENCES

National Trust 1602
Woolmer, The Barmera Story: A History of Barmera and District, p. 10

Verbal George Woolmer, 1983
Archival photographs

TYPE OF ITEM

LAND Natural feature
Historical site
Historical Gdn.
BUILDING
STRUCTURE
PHYSICAL CONDITION

PHOTOGRAPH Film No. 808 Negative No. 4
Direction of view to S

STATUS

Reg. of State Her. Items
Reg. Interim L.
Nominated
National Estate
Reg. Proposed L.
National Trust
CL RL File
Other

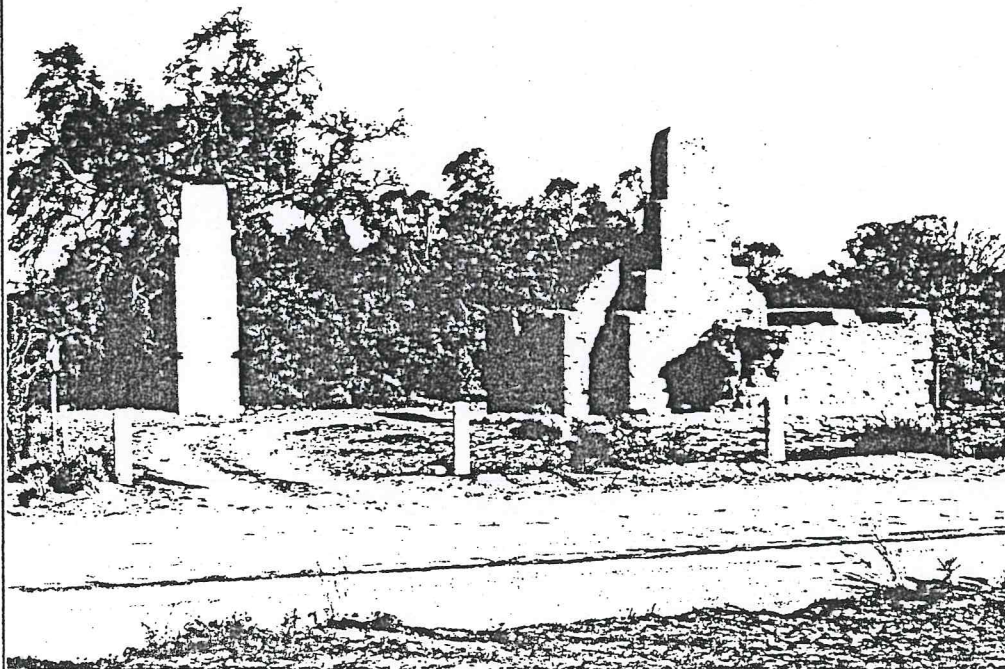
RECOMMENDATION

(A) State (B) Local

PREPARED BY

HERITAGE INVESTIGATIONS

Date: 1983



IIS/D4/25.11.81

6929-10278

Former 'Overland
Corner' Hotel
Overland Corner

~~75/27/01~~ 68/27/13

Collwell & Finch - 1973

NAPPER'S OLD ACCOMMODATION HOUSE

The establishment of a colony on the Adelaide plains in 1836 created a market in South Australia for stock, and in 1837 Joseph Hawdon and Charles Bonney left Howlong on the Murray River in New South Wales with a mob of 300 cattle.

After crossing the South Australian border they followed the river to Overland Corner, then pushed on to Nor' West Bend (Morgan), and on to Adelaide.

Within ten years their track, which in many places followed a "native highway" along the Murray River, was the recognised overland route to the growing capital city.

The overlanders needed accommodation, so such places as Napper's Accommodation House on the northern end of Lake Bonney were built along the route.

Originally called the Lake Bonney Hotel, it was owned by William Napper who came to the district in 1853. Napper's cottage, still intact, stands near the river.

Both buildings are on the site of an Aboriginal burial ground.

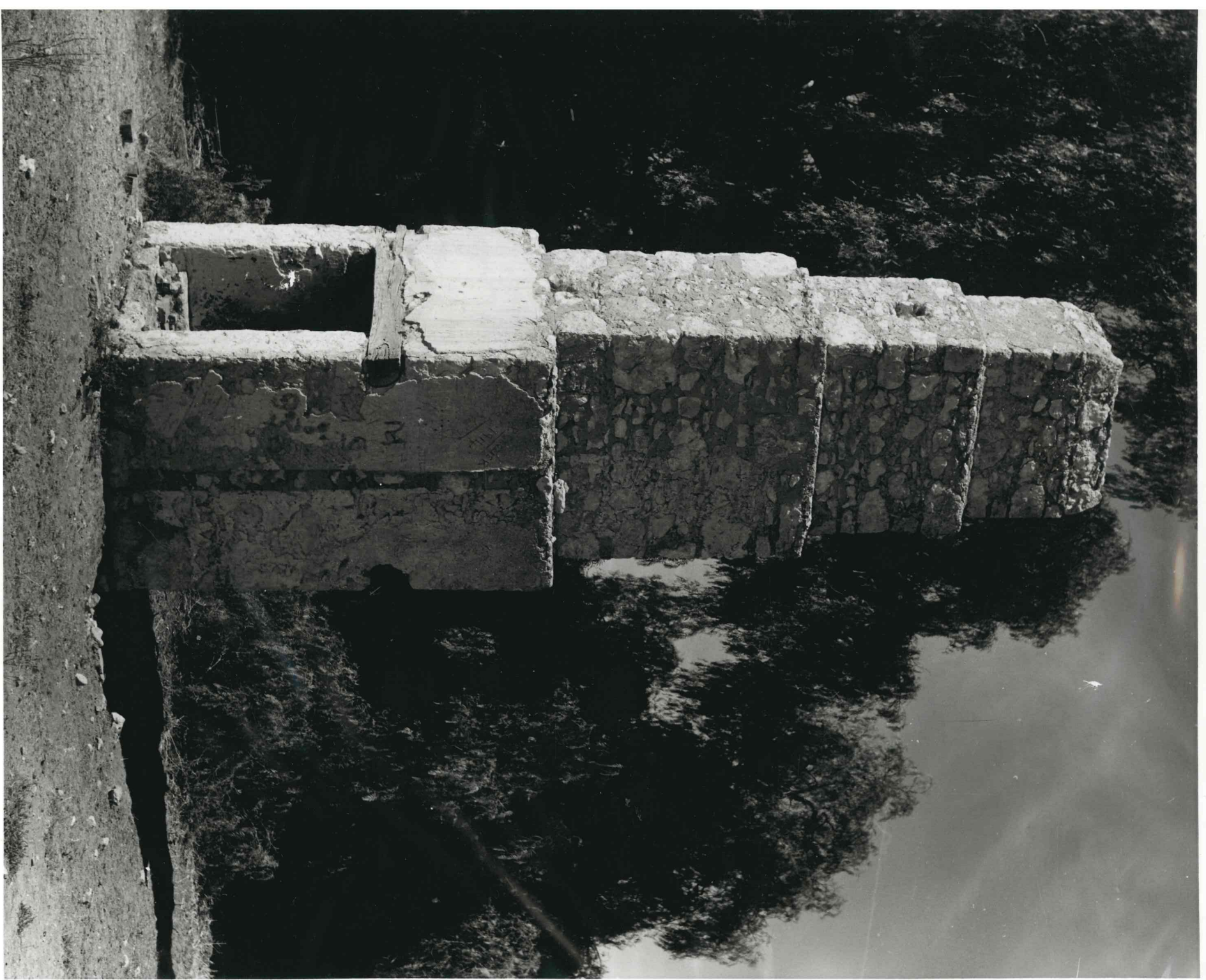




Lake Benney.

§ Inn
25/26° 0' 0" S Long 160° 20'







FILM 70
NO 9

NORTH WEST CORNER, NAPPER'S OLD
ACCOMMODATION HOUSE 6929-10279

BARMERA
2-3-79