

10312, 10169

03/05/94

AUSTRALIAN HERITAGE COMMISSION

PAGE: 27

LISTING FOR Water Transport  
IN SA

NAME OF PLACE Lighthouse and Keepers Cottages

006887 306196000101  
REGISTERED

LOCATION/BOUNDARIES:

Lighthouse and Keepers Cottages: Althorpe Islands, off the tip of Yorke Peninsula in Investigator Strait, 14km south west of Stenhouse Bay.

The Commission originally proposed the entry of the Lighthouse Keepers Cottages and Jetty in the Register. Following an objection to the proposal, the Commission subsequently entered the Lighthouse (Tower) & Cottages in the Register of the National Estate.  
N.T. S.A. Classified Buildings Ref: 2419.

TITLE INFORMATION:

STATEMENT OF SIGNIFICANCE:

With Lighthouse-Keepers Cottages and Jetty, constitutes a complex. Althorpe Island is a conservation park of 91 hectares. Lighthouse built 1879.

SIGNIFICANT ASSOCIATIONS:

Hickson, R  
Designer

SIGNIFICANT DATE(S):

1879

DESCRIPTION:

A round tower surmounted by a cornice, supporting a first order dioptric light; constructed of limestone quarried and cut on the island; lintels, quoins & cornice are of hard sandstone quarried from the base of the island; there is a spiral staircase inside made of solid blocks of sandstone, and the treads are faced with mintard slate; there are also four slate floors. The light was converted to electric 1963.

CONDITION:

BIBLIOGRAPHY:

10312  
10314

17/03/94

AUSTRALIAN HERITAGE COMMISSION

PAGE: 7

NAME OF PLACE Lighthouse and Keepers Cottages  
-----

006887 3/06/196/0001/01  
REGISTERED

LOCATION/BOUNDARIES:  
-----

Lighthouse and Keepers Cottages: Althorpe Islands, off the tip of Yorke Peninsula in Investigator Strait, 14km south west of Stenhouse Bay.  
The Commission originally proposed the entry of the Lighthouse Keepers Cottages and Jetty in the Register. Following an objection to the proposal, the Commission subsequently entered the Lighthouse (Tower) & Cottages in the Register of the National Estate.  
N.T. S.A. Classified Buildings Ref: 2419.

TITLE INFORMATION:  
-----

STATEMENT OF SIGNIFICANCE:  
-----

With Lighthouse-Keepers Cottages and Jetty, constitutes a complex. Althorpe Island is a conservation park of 91 hectares. Lighthouse built 1879.

SIGNIFICANT ASSOCIATIONS:  
-----

SIGNIFICANT DATE(S):  
-----

Hickson, R  
Designer

1879

DESCRIPTION:  
-----

A round tower surmounted by a cornice, supporting a first order dioptric light; constructed of limestone quarried and cut on the island; lintels, quoins & cornice are of hard sandstone quarried from the base of the island; there is a spiral staircase inside made of solid blocks of sandstone, and the treads are faced with mintard slate; there are also four slate floors. The light was converted to electric 1963.

CONDITION:  
-----

BIBLIOGRAPHY:  
-----

# INVESTIGATOR STRAIT SHIPWRECK TRAIL

*Since 1878, when the schooner 'Young St George' was wrecked during a gale, a further five vessels have been lost on or around Althorpe Island.*

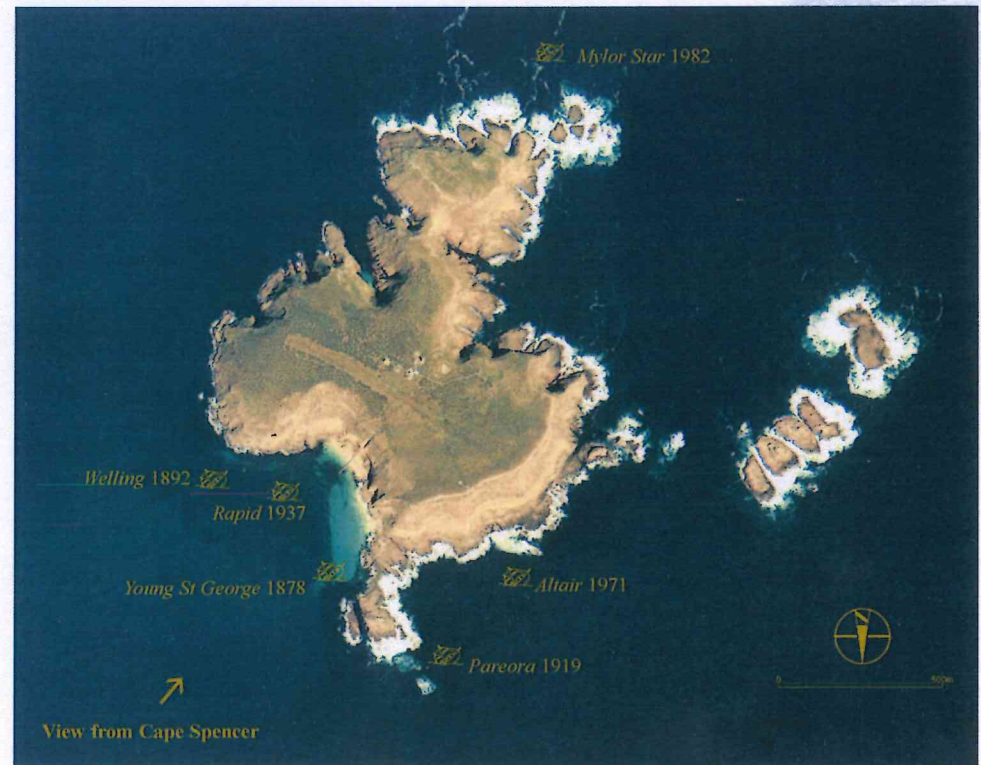
The *Young St George* was anchored on the north-east side of the island, carrying material for the construction of the new light station, when it parted from its moorings and was blown onto nearby rocks. The crew reached safety and returned the next morning to salvage everything moveable. The hull was a complete loss.

In 1919 the 650-ton steamer, *Pareora*, grounded on rocks and sank within a few hours during a voyage from Port Pirie to Hobart with a cargo of zinc concentrates. The captain and ten crew died in this tragedy.

The other four wrecks were all fishing cutters. Two, the *Welling* in 1892 and the *Rapid* in 1937, came to grief while sheltering from storms - evidence that, despite appearances, Althorpe Island is not always a safe anchorage in a storm. It can be a dangerous place for small vessels caught by a sudden shift of wind.



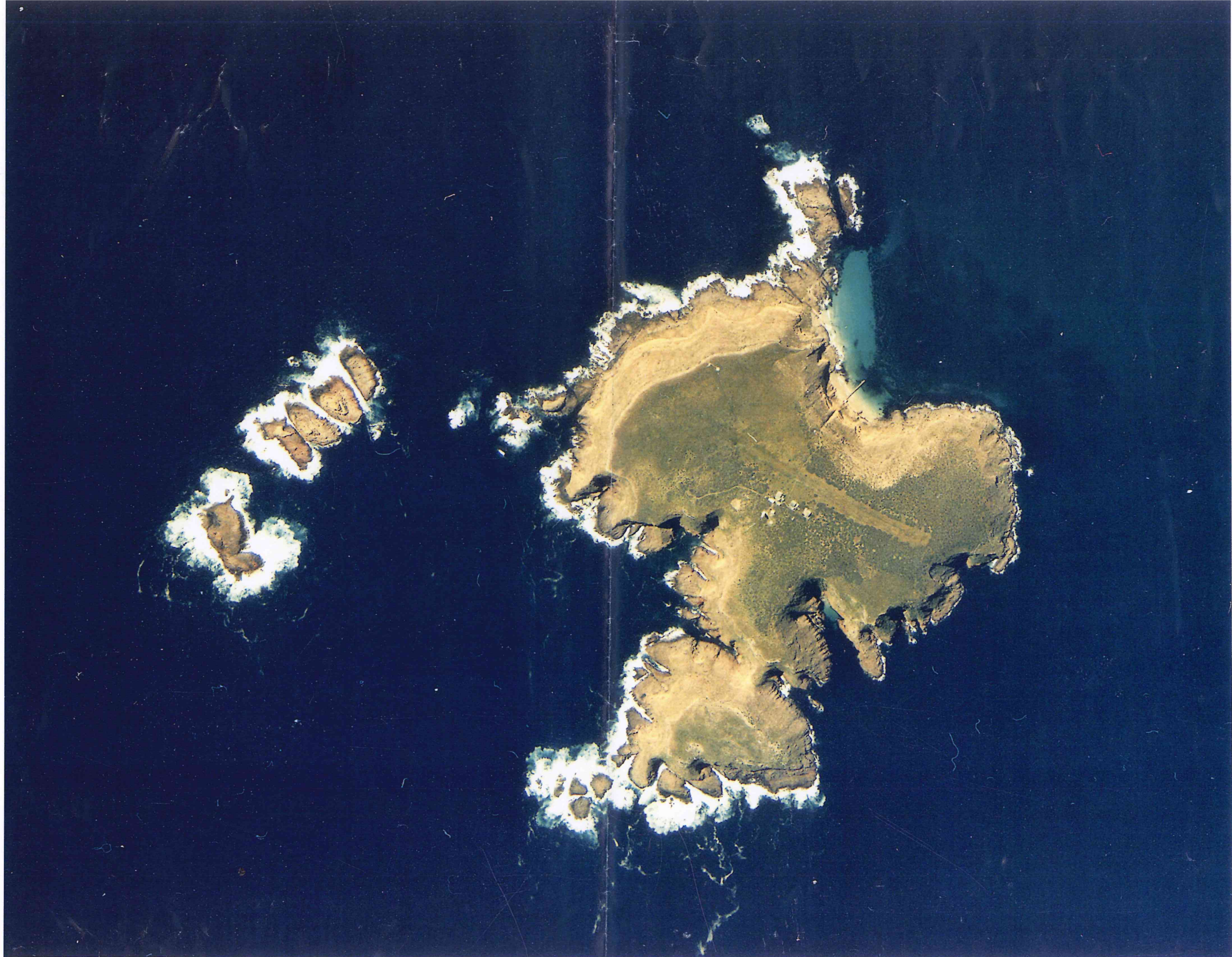
In 1971 the *Altair* ran aground in unexplained circumstances, while the shark boat *Mylor Star* (above) was lost in 1982, when its engines failed and the \$100 000 vessel crashed onto rocks.



## Althorpe Island

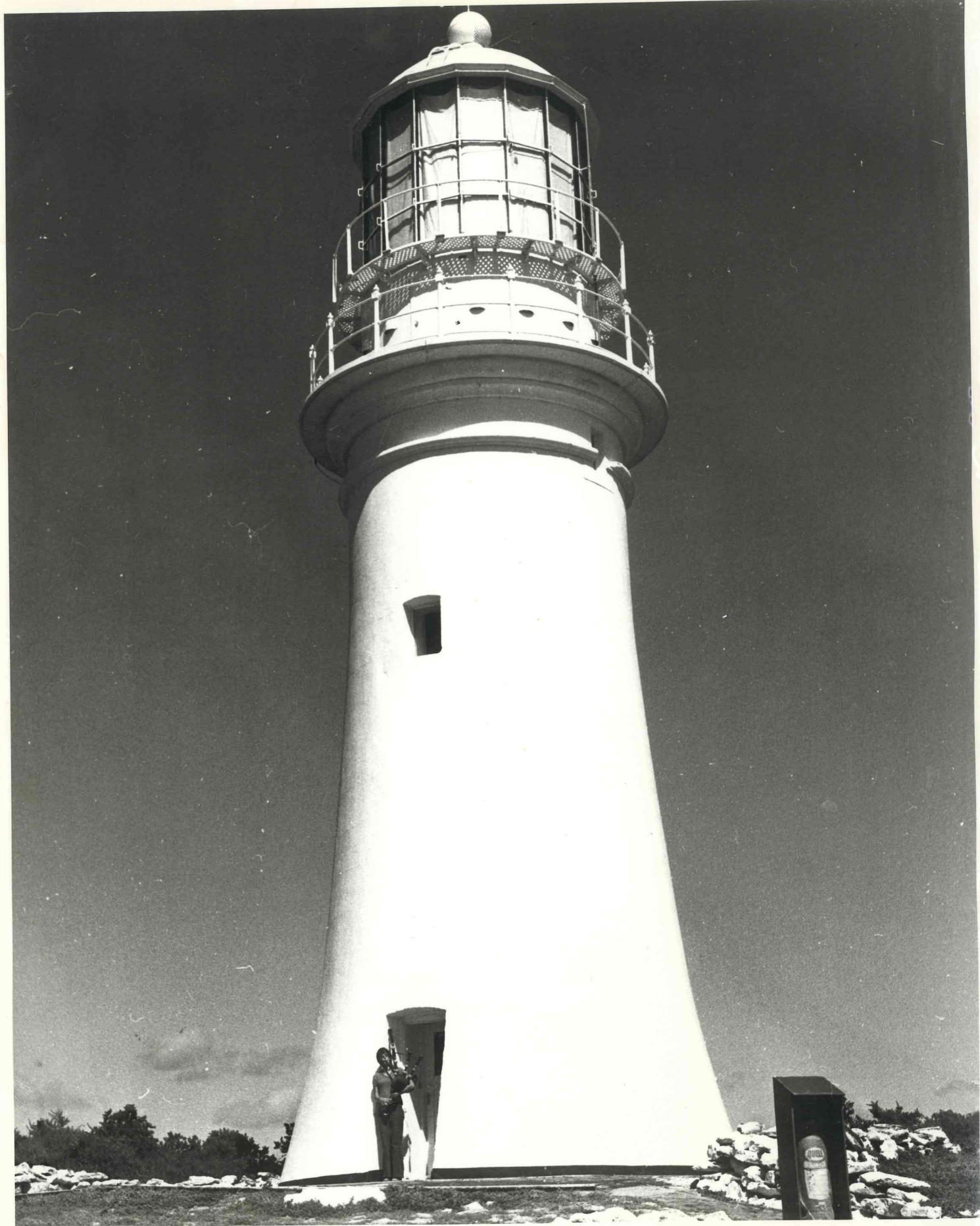
SIGN 7 (OF 7) INVESTIGATOR STRAIT MARITIME HERITAGE TRAIL





st / me  
43

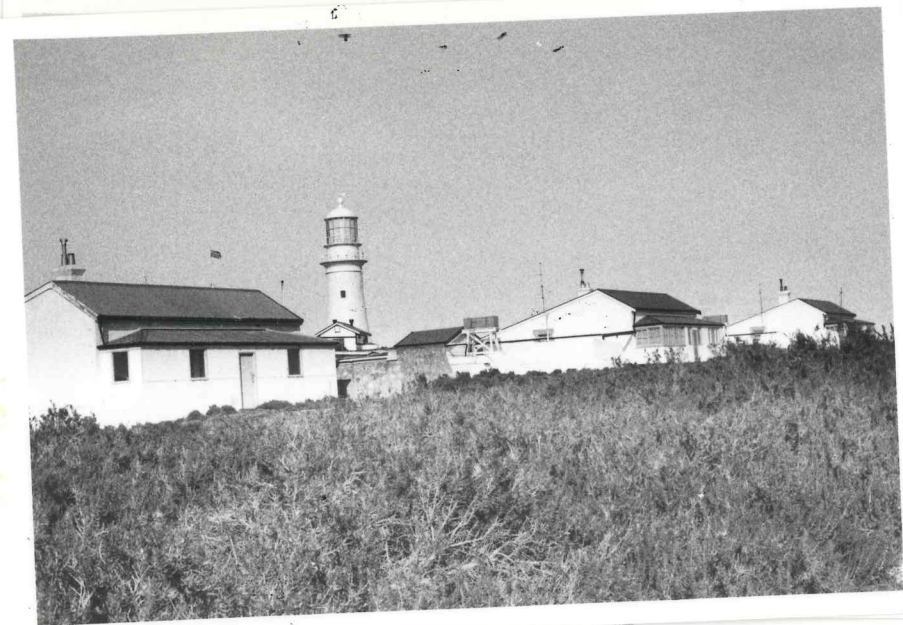












Kodak  
PAPER  
400

0010

0010



KODAK  
SAFETY FILM



































