

ITEM IDENTIFICATION SHEET

ITEM NAME

Current: MCKINLAY MEMORIAL

Historical:

ITEM NUMBER

116

DATE

HERITAGE SIGNIFICANCE:

Erected with funds donated by the people of Gawler to commemorate the services and personal merit of the explorer John McKinlay (1819-81). The Mayor of Gawler, W.F. Wincey, was chairman of the Commemorative Committee and most of the prominent citizens were members.

Foundation stone (presented by Hugh Fraser, Manager of the Delabole Slate Company) laid 14 November 1874 by John Forrest, a fellow explorer and later premier of W.A., and the keystone of the arch was laid in position 11 March 1875. The monument was completed in September 1875, the total cost being £650. Obelisk of polished Aberdeen granite, lower arch of diamond hammered freestone. Original design by Adam Ball not undertaken (too costly).

McKinlay associated with James Pile, a prominent Gawler resident, from 1850 and married Pile's daughter in 1863. He settled in Gawler following his return from the Northern Territory exploration expedition in 1865 and died at "Oaklands" (q.v.) on 31 December 1872. He is buried in the Willaston Cemetery.

Adjacent wall (subsequently known as Pioneer Place Wall) built in 1875 (contractor Manifold and Pimlott).

REFERENCES:

Written: Loyau 161-74; Coombe 289-91, 392-3; National Trust 886, Bunyip 11 March 1970.

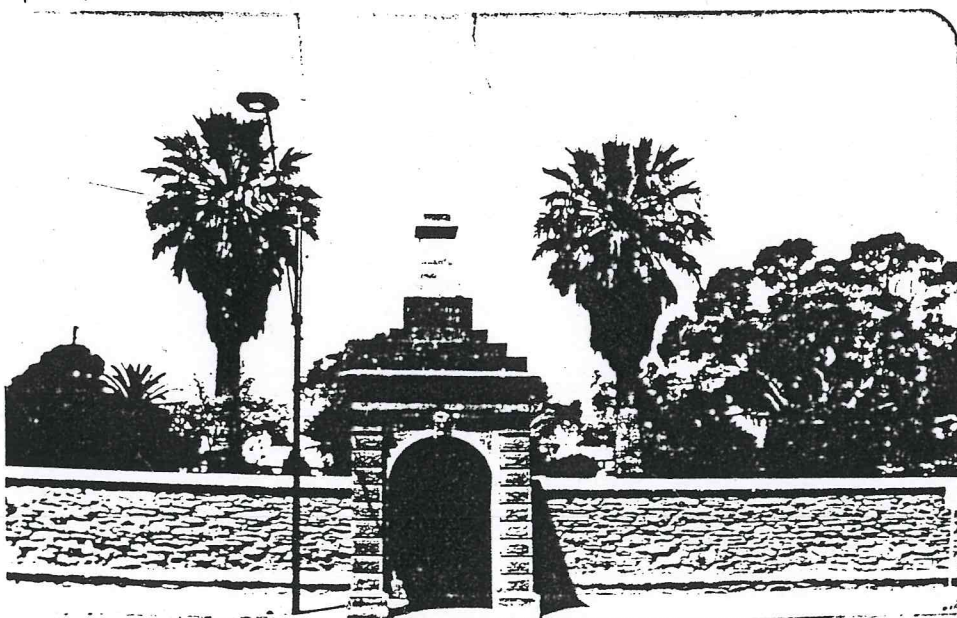
Vocal:

Archival Photographs: SAA.B.25175

RECOMMENDATION:

PHOTOGRAPH

Film No: Negative No:
Direction of view:



LOCATION

Street No:
Allotment:
Section:
Hundred:
Street: Murray
Town:
LGA:
Postcode:
State Hist.Pres.
Region:

HISTORICAL THEME

Theme:
Subtheme:

HISTORICAL PERIOD

State:
Study Area: 1871-1900

TYPE OF ITEM

LAND Natural Feature
Historical Site
Garden
BUILDING Individual
Group
STRUCTURE Complete
Relic

STATUS

Register of State Heritage Items
On Register
Interim List
Nominated
National Estate
National Trust 886
R.A.I.A.
Civic Trust
N.P. & W.L.S.
Council
Australian Heritage Engin. Record
Other

MAP

Scale:
Source:

PREPARED BY:

DATE:

GAWLER HERITAGE SURVEY STAGE 2

REGISTER NOMINATION REPORT

<p>Date: 3/10/83</p> <p>Item Name: MCKINLAY MEMORIAL AND PIONEER PARK.</p> <p>Item Address: Murray Street, Gawler.</p>	<p>Heritage Branch Reference Number: 6628-10381</p> <p>Gawler Heritage Survey Stage 1 Item No. : 116</p>
--	--

SUMMARY

This report has been prepared under Stage 2 of the Gawler Heritage Survey.

Historically, this monument is significant because it commemorates the services and personal merit of explorer John McKinlay. It was erected in 1874/75 adjacent to the old Gawler cemetery, now known as Pioneer Park, in which many of Gawler's early settlers were laid to rest.

Architecturally, the structure represents fine craftsmanship and design and is unique in the township.

Environmentally, the structure is an important component in developing the character of the early exploring spirit of the township and should be closely associated with the adjacent Pioneer Park.

The integrity is still complete.

HERITAGE CONSERVATION BRANCH RECOMMENDATION:

..... *Brian C. Rowing*
 Manager

It is recommended that this item be included/~~not included~~ (delete that phrase not applicable) on the Register of State Heritage Items, and that it be categorised (recommended S.A. Heritage Committee categorisation, if applicable). **H1, H2, A2, A3.**

SOUTH AUSTRALIAN HERITAGE COMMITTEE RECOMMENDATION:

.....
 Chairman

Assessed: Recommended.

The Committee added the following riders:

1.

2.

South Australian Heritage Act 1978-82	Register of State Heritage Items ITEM EVALUATION SHEET Buildings and Structures	Ref. No. 6628-10381
	Item MCKINLAY MEMORIAL AND PIONEER PARK. Murray Street, Gawler.	Status National Trust 886 N.E.
Age 1875	Subject People	Style Classical Monument.

Qualitative Data

Grading

History	E	VG	AG	FP	NA
1. Context Erected in 1874/75 to commemorate the contribution made by explorer John McKinlay on his expeditions to the interior and northern parts of Australia. Married Jane Pile at Gawler 1863 and died here in 1872. Constructed adjacent to Pioneer Park, Gawler's	X				
2. Person/Group original cemetery. John McKinlay led S.A. Burke Relief Expedition 1861/62 - also expedition to Northern Territory 1865.	X				
3. Event First crossing of Australia from South to North.		X			
Architecture					
4. Architect/Builder Citizens of Gawler.		X			
5. Design A particularly attractive monument with three Roman arched openings with Keystone. Intricate and elaborate brick worked stone.		X			
6. Construction Diamond hammered freestone lower arch. Obelisk of polished Aberdeen granite.		X			
7. Interior			X		
8. Representation This item does represent some architectural significance. It is a rare and scarce example of this type of monument.		X	X		
Environment					
9. Continuity The item relates well to its immediate environment being situated next to Pioneer Park. It is also at a major intersection. Relates well with the wall along Pioneer Park and Pioneer Park.		X			
10. Local Character The item is significant to the local character of Gawler and its early exploring spirit.		X			
11. Landmark One of Gawler's most significant landmarks.	X				
Integrity					
12. Alterations There have been none.		X			
13. Condition Badly discoloured from the weather and caked with moss.			X		
14. Compatibility Pioneer Park is used as a recreation park and is compatible to the locality.		X			

South Australian Heritage Act 1978-82	Register of State Heritage Items ITEM EVALUATION SHEET Buildings and Structures	Ref. No. 6628-10381
	Item McKINLAY MEMORIAL AND PIONEER PARK Murray Street, Gawler.	Prepared By: HIGNETT & COMPANY MARGARET MAY

Supplementary Information

Adaptation: It is very unlikely that the McKinlay Memorial and associated Pioneer Park will be changed to other uses.

Interpretation: Both items have high interpretation potential. The McKinlay Memorial is interpretative of the early pioneers of Gawler and how Gawler was the Gateway to the North. The land base capability is good, accessibility by the public is good but could be better. Proximity to other such resources is fair. Relative geographic position is good.

History and Sources

The McKinlay Memorial in Murray Street erected in 1874/75 commemorates the contribution made by explorer John McKinlay on his expeditions to the interior and northern parts of Australia.

John McKinlay, born in 1819, migrated to New South Wales in 1836 where he established himself by taking up squatting leases and selling them, some in partnership with James Pile of Gawler.

Well known by 1861 as a bushman and explorer, he was appointed by the South Australian Government to lead the South Australian Burke Relief Expedition. He and his party found Burke's grave in December the same year, then journeyed on to the Gulf of Carpentaria.

He was welcomed back at Gawler in 1862 as "a conquering hero". The following year he married James Pile's daughter Jane at St. George's Church of England, Gawler.

In 1865 he led an expedition to the Northern Territory to choose and survey a suitable area for settlement - he selected Port Darwin.

He settled at Gawler on his return from his Northern Territory exploration expedition and took up residence with his wife and father-in-law at "Oaklands" where he died in December 1872.

After his death a committee was formed to consider the erection of a suitable memorial. In November 1874 the foundation stone of the Memorial was presented by Hugh Fraser M.P. and laid by fellow explorer John Forrest. The Monument was completed in September, 1875 at a cost of £650. The lower arched portion some fifteen feet high, was constructed of diamond hammered freestone; the obelisk on top, ending with a needle point added a further twenty feet and was constructed of Aberdeen granite.

The monument was erected on the footpath in Murray Street adjacent to the old Gawler Cemetery. The cemetery was part of Light's original plan of the township of Gawler and was used as such until 1870.

South Australian Heritage Act 1978-82	Register of State Heritage Items ITEM EVALUATION SHEET Buildings and Structures	Ref. No. 6628-10381
	Item MCKINLAY MEMORIAL AND PIONEER PARK	Prepared By:

History and Sources

The earliest headstone in the cemetery was a memorial to Emily Louisa King (died 15.1.1836), a daughter of Stephen King, one of the original proprietors of the Gawler Special Survey. The last burial was conducted here in 1870. In 1936 the old cemetery became a public park and has since been known as Pioneer Park.

Until recently some of the original headstones were retained in the park. The park now comprises rose gardens and lawns and a memorial to those who fell in the Great War and also in Malaysia, Korea, Borneo and Vietnam has been erected.

Sources:

- C. L. Alexander, Royal Geographical Society of Australasia (S.A. Branch) Proceedings, 63 (1962) pp.1-22
- Ian Auhl, Gawler Sketchbook (Adelaide, 1973) pp. 18-19.
- Australian Dictionary of Biography, 5 (Melbourne, 1974)pp.174-6.
- A. R. Dawes, List of Burials in the Original Cemetery of Gawler Town (SAA).
- E. H. Coombe, History of Gawler 1837-1908 (Adelaide, 1910),pp289-91,392.
- Gawler Heritage Study Stage 1 (Adelaide, 1981)p. 98.
- George E. Loyau, Handbook of Gawler, (Adelaide, 1880)pp.161-174.
- National Trust , 886.

