

South Australian Heritage Act 1978-80	Register of State Heritage Items ITEM EVALUATION SHEET Buildings and Structures						
	Item HOPE COTTAGE Centenary Avenue, KINGSCOTE. K.I.						
Age 1859	Theme		Office 6426-10401				
Period 1852-1883	Subject SETTLEMENT - Early		Region 14 Kangaroo Island				
Building Type Dwelling	Style Colonial/vernacular		Status N.T. 1233 R.				
<u>Qualitative Data</u>			<u>Grading</u>				
Component			E VG AG FP NA				
Comment							
<u>HISTORY</u>							
1. Context: Strongly associated with the early history of settlement of Kingscote.			*				
2. Person/Group: Association with the Calnan family, prominent early pioneers, who built and lived in the three cottages.			*				
3. Event: No specific event known			*				
<u>ARCHITECTURE</u>							
4. Architect/Builder: Not established			*				
5. Design: One of three identical six-roomed cottages, symmetrical with deep hipped roof. Cellar & attic.			*				
6. Construction: Coursed limestone rubble walls, originally shingle roof, 4-paned sash windows.			*				
7. Interior: Panelled linings to doorways are unusual for cottage.			*				
8. Representation: originally noteworthy as one of a group of three identical cottages. Hope alone retains any integrity.			*				
<u>ENVIRONMENT</u>							
9. Continuity: Part of National Trust museum complex; the upper part of Cape Willoughby Lighthouse and implement sheds recently erected on site.			*				
10. Local Character: Contributes to the dominant older character of the area.			*				
11. Landmark: Little significance			*				

South
Australian
Heritage
Act
1978-00

Register of State Heritage Items
ITEM EVALUATION SHEET
Buildings and Structures

Item HOPE COTTAGE
Centenary Avenue, KINGSCOTE. K.I.

Component

Comment

Grading

E VG AG FP NA

INTEGRITY

12. Alterations: shingle roof replaced with corrugated iron in approx. 1920. Back verandah possibly later addition.
13. Condition: maintained by National Trust.
14. Compatability: Used as a museum, however, retains domestic scale and character.

*

*

*

Supplementary Information

Adaptation: Any ancillary museum buildings erected by the National Trust should allow sufficient curtilage to be retained around the cottage.

Interpretation: interpretive role as part of the Museum complex.

Current Situation: Owned by the Department of the Environment and leased to the Kingscote Branch of the National Trust for 20 years in 1980.

Evaluated By Carolyn Wig
Register Architect

Reviewed By Mark A. Butcher
Register Supervisor

I.E.S./D5/301182



CHARITY COTTAGE (HOPE IN BACKGROUND)

KINGSCOTE

1982



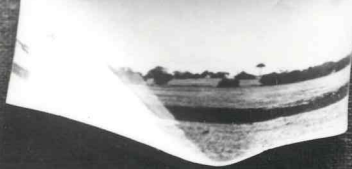
HOPE COTTAGE, KINGSCOTE

1982

FILE 620
No 11

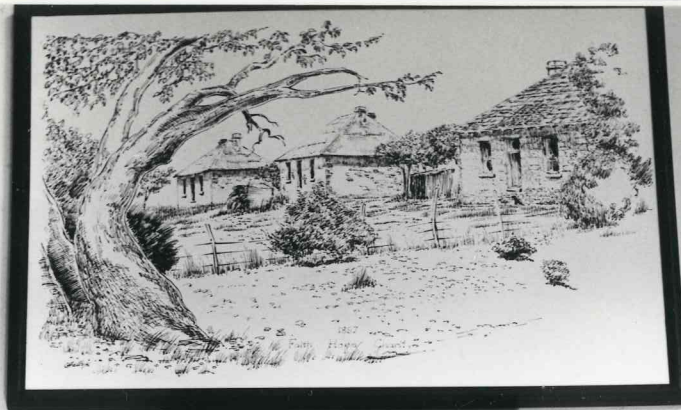
DETAILS FROM KINGSOTE
NAT. TRUST MUSEUM

NOV '82
LHMAN



For the comfort of others
and your health's sake
NO SMOKING PLEASE
NATIONAL HEART FOUNDATION OF AUSTRALIA

Copyright 1982 by National Trust
All rights reserved. No part of this publication may be reproduced without permission in writing from the National Trust.



THE STORY OF HOPE COTTAGE

HOPE COTTAGE WAS OPENED AS A TOUR MUSEUM DECEMBER 10th 1972.

IN 1850 THE CALVIN BROTHERS BUILT 3 HOUSES ON THIS HILL, FAITH, HOPE AND CHARITY. 'HOPE' HAD MANY TENANTS OVER THE YEARS AND WAS VACATED FOR THE LAST TIME IN 1971.

THROUGH THE GOOD GRACES OF THE OWNER, MR ARTHUR DAW JR, THE NATIONAL TRUST WAS ABLE TO SECURE THE HISTORIC OLD HOME FOR PRESERVATION.

THE TASK OF RENOVATION LOOKED FORMIDABLE, BUT AFTER MONTHS OF PATCHING, PAINTING AND COUNTLESS OTHER JOBS, 'HOPE' WAS RESTORED. THE DARK FIREPLACES WERE REVEALED WHEN PLASTER WAS CHIPPED AWAY. SKILFUL REPAIR RESTORED THEM TO THEIR ORIGINAL STATE.

SHEDS WERE ERECTED TO HOUSE OUTSIDE EXHIBITS AND A START MADE ON THE GROUNDS WITH A PLANTING OF NATIVE TREES. BY OPENING DAY THE COTTAGE HAD A NEW LEASE OF LIFE.

THE CEREMONY WAS PERFORMED BY MAJOR GENERAL SYMES, FOUNDER OF NATIONAL TRUST IN SOUTH AUSTRALIA.

MORE OF THE STORY OF HOPE COTTAGE MAY BE READ IN THE ALBUM OF THAT NAME.



FILM 620
Nº 14

DETAIL FROM KINGSCOTE
NAT. TRUST MUSEUM

NOV '82
Lottan



Film 1625
Neg. 23

Hope Cottage, Kingscote
Kangaroo Island

6426-10401
May, 90



FIRST MOUNTAIN OF
DAY FAMILY
WHELAN DAY, MARGARET M. 1860

[illegible]

FILM 620
Nº 13

DETAIL FROM KINGSCOTE
NAT. TRUST MUSEUM

NOV '02
Lottman



HOPE COTTAGE, KINGSCOTE

1982.

10401

