

South Australian Heritage Act 1978-82	Register of State Heritage Items ITEM EVALUATION SHEET Historic Site	Ref. No. 6630-10432
	Item CEMETERY OFF SPRING STREET, BURRA	Status -
Age 1850-1970	Subject COMMUNITY SERVICES - Burial	Site Type Cemetery

History

Physical

Environment

Integrity

Context	Represents a continuum of Burra's population, which between 1845 and 1877 comprised a variety of nationalities involved in copper mining and associated activities. Following 1877, the population were engaged in farming and agriculture.	E	VG	AG	FP	NA
Person/Group	South Australian Mining Association, the owner of Section 1, established the Cemetery originally on a site nearby between 1846-1850, later relocating at present site.		X			
Event	1860's Wall erected by public subscription.			X		
Natural Elements	Set on flat open ground adjacent to Burra Creek, one formal avenue of trees down the centre, olives along the boundary walls on west and east sides, miscellaneous shrubs.			X		
Man-Made Elements	Large open cemetery punctuated by a stone perimeter wall and gazebo, wide range and variety of head stones and grave fencing.		X			
Representation	Large country cemetery, interesting in its perimeter wall and range of head stone types.		X			
Continuity	Set in cleared open ground, a contributing element in the landscape but not a visually dominant one.			X		
Local Character	Contributes to the broader historic character of Burra.			X		
Landmark	A familiar local landmark but not strong visually.			X		
Alterations	Basically intact, central portion cleared of head stones by District Council.		X			
Condition	Some areas and particular graves in need of maintenance, wall in need of repair in some spots.			X		
Compatibility	Only a few vacant plots remain within the walls, current burial occur outside eastern wall of cemetery.		X			

South Australian Heritage Act 1978-82	Register of State Heritage Items ITEM EVALUATION SHEET Historic Site	Ref. No. 6630-10432
	Item CEMETERY OFF STRING STREET, BURRA	Prepared By: Ivar Nelsen Iris Iwanicki

Supplementary Information

Adaptation: The central section, cleared of head stones, should be landscaped with lawns and shrubs to fill the unsightly void. A plan should be prepared for the orderly expansion of the cemetery beyond its present walled limits. New sections should be walled in a similar fashion to the present ones which themselves have been extended. The present wall should be retained and maintained better. New buildings should be kept to a minimum and made part of the stone walls. The approach to the cemetery should be improved but kept clear.

Interpretation: The site has an interpretive potential but this does not necessarily require an active physical device. Cemeteries are somewhat self explanatory.

History and Sources

A short distance from the former township of Korrunga (now Burra) lies the Burra cemetery. Approached through an avenue of trees, the cemetery was established in 1850, and is surrounded by a wall erected in the 1860's by public inscription and later extended. The headstones contained within the walls reveal the varied background of Burra's early population, which comprised Cornish miners, Welsh and German smelters, Irish carters and Spanish muleteers who were associated with the Burra Burra mine (1845-1877).

An original cemetery was established in 1845, shortly after the mine commenced operations. This is located on the hillside opposite the walled cemetery, and separated from the latter by Burra creek. A pile of stones and two solitary, badly weathered headstones, one believed to possibly commemorate Thos. Pickett, the shepherd who discovered copper at Burra, marks the area. The South Australian Mining Association would not permit freehold in its township, nor graveyards in the church allotments, mindful of the possibility of tracing further ore deposits within its section of land. Its first choice of a cemetery site was subject to flooding from the nearby creek. Reports of human remains uncovered by flooding prompted the S.A. Mining Association to relocate the cemetery to its present walled site around 1850. Some headstones from the old cemetery were placed along the inside of the western wall. The memorials, despite weathering, include fine examples of delicate, intricate carving in Mintaro slate by an A. Lutze. Many are in need of conservation measures if they are to be preserved. One notable headstone is that of a Chinese man named Kong Pong, who died in 1872, and whose name may be a version of his place of birth in China, the village of Gongbian in Baisha. Another commemorates the first murder in the township of Koorunga, and reads:

"Erected by his brother seamen to the memory of John Smith of London, aged 21 years, who was murdered by a German in the township of Koorunga on Christmas Eve 1849".

Others chronicle the lives and misfortunes of the predominantly mining community up to the 1870's, and afterwards, of the farming and agricultural families who used Burra as a commercial, social and religious centre. A cleared area in the centre of the cemetery resulted from a "tidying" exercise carried out in the late 1960's or early 1970's. Unusually heavy rainfall caused subsidence of graves, and headstones toppling or leaning at various angles. While many of the headstones were placed around the cemetery's perimeter, many have disappeared. A list of headstones

South Australian Heritage Act 1978-82	Register of State Heritage Items ITEM EVALUATION SHEET Buildings and Structures	Ref. No. 6630-10432
	Item CEMETERY OFF SPRING STREET, BURRA	Prepared By: Ivar Nelsen Iris Iwanicki

History and Sources

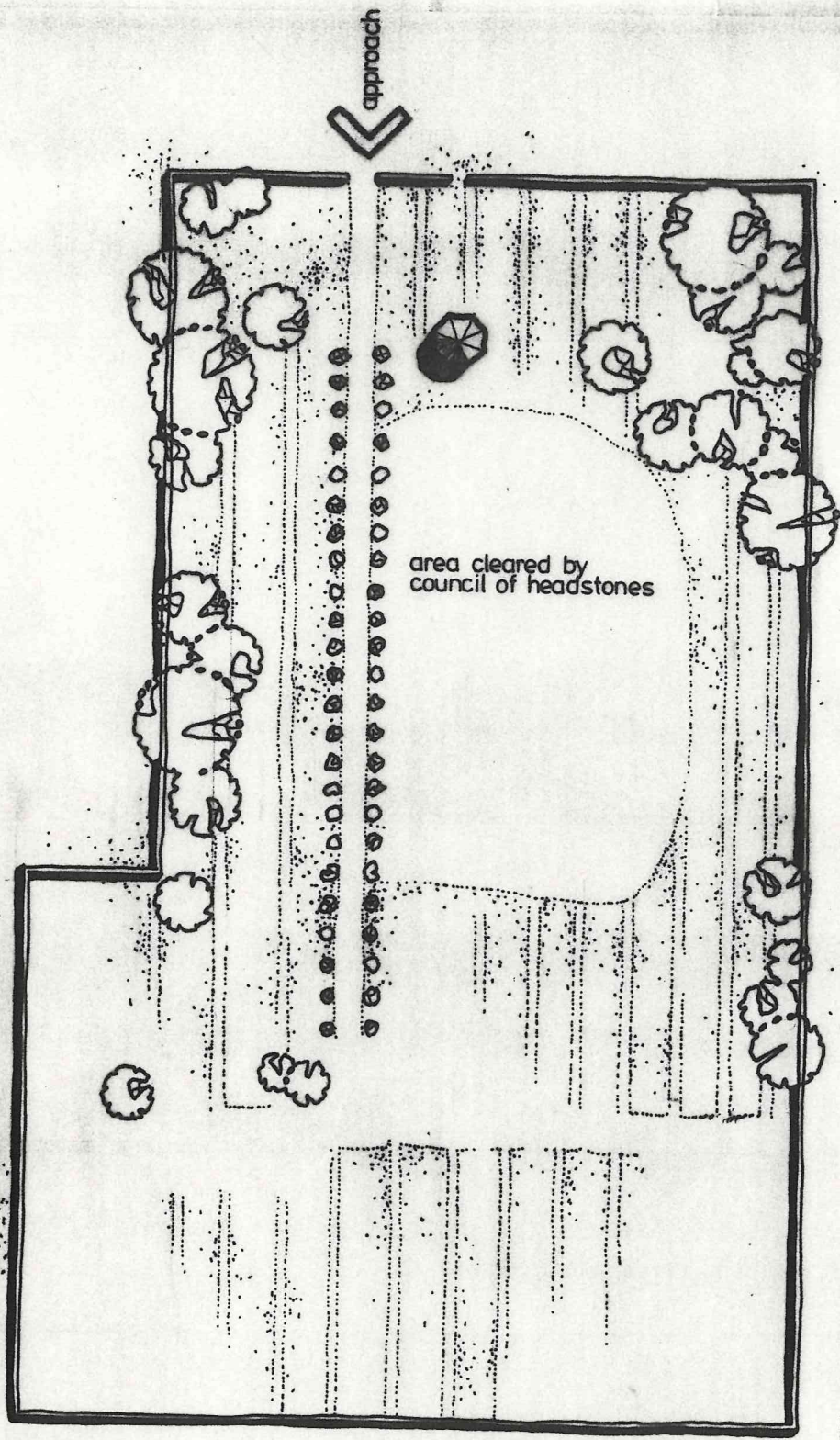
was made by the S.A. Geneology Society following the event and is stored in the State Library. (Burra Conservation Study, 1978).. Both cemeteries are owned by the Burra Council.

Burials now occur outside of the walled cemetery on the eastern side.

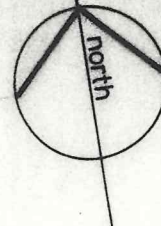
The cemetery is historically important at a regional and State level because of its association with the copper town of Burra, and its inhabitants.

Sources:

L.T.O. Searches
Mr. Michelmore, Burra Council
Mr. Ian Auhl, historian
I. Auhl and M. Perry, Burra Sketchbook
Father Kenny, Church of St. Joseph's, Burra
Burra Conservation Study, 1978.



cemetery, burro



0 25m

ivar jun 83

State Heritage Areas of South Australia



Burra Cemetery

Spring Street, Burra

SAHR 10432 – confirmed as a State Heritage Place 8 November 1984



Main gates and central avenue, 2005

The Burra Cemetery was established on its present site in 1850 and features a range of head stones and grave fencing and a stone perimeter wall, erected by public subscription in the 1860s and later extended.

It is set on open flat ground adjacent to the Burra Creek, with a formal avenue of trees in the centre and olives along the boundary walls. The cemetery provides a valuable record of the diversity of Burra's early mining population, and the later farming and pastoral community of the region.



Burra Cemetery, 2005

An earlier cemetery was established in 1845, shortly after the mine commenced operations. The site is located on the hillside opposite the walled cemetery, and separated from it by Burra Creek. The South Australian Mining Association would not permit freehold in its township (Koorunga), nor would it allow graveyards in the church allotments, being mindful of the possibility that the ore deposits might spread into these areas. However, the first choice of a cemetery site was subject to flooding from the creek. Reports of human remains uncovered by floods prompted the SA Mining Association to relocate the cemetery to its present position. Some sources suggest that headstones from the old cemetery were placed along the western boundary of the new site.

The headstones within the cemetery chronicle the lives and misfortunes of the mining community (up to 1877) and the pastoral and agricultural families who have since used Burra as a commercial, social and religious centre. A cleared area in the centre of the cemetery resulted from a 'tidying' exercise c1970. Unusually heavy rainfall caused the graves to subside and many headstones toppled or leant at various angles. While some of these headstones were placed around the cemetery's perimeter, many have unfortunately disappeared. A list of headstones was drawn up by the SA Genealogy Society following the clean-up, and is stored in the State Library.



Cleared centre area, 2005



Headstones along the boundary wall, 2005



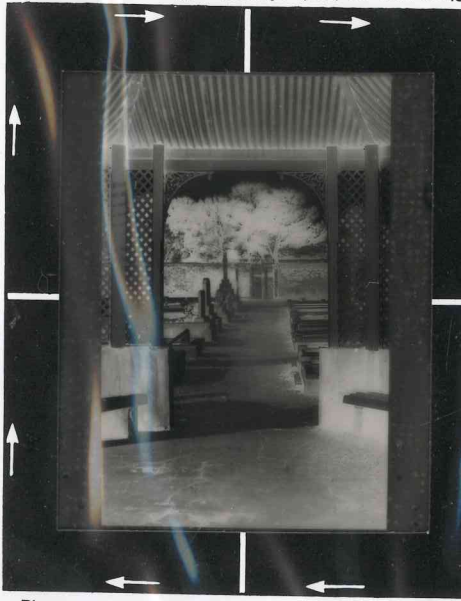
Government of South Australia
Department for Environment
and Heritage





1 2 3 4 5 6 7 8 9 10

TECHNICOLOUR. S.A.



Place neg. on back of mask with arrows on neg. in the same direction as the arrows on the mask i.e. emulsion faces mask.

Place neg. on back of mask with arrows on neg. in the same direction as the arrows on the mask i.e. emulsion faces mask.

PHOTOGRAPHER

CUSTOMER

NEG. No.

These sizes apply to full frame 35mm mask No.9 only

9x13 13x18 18x25

355

57

710

LAB. DATA

D

R

G

B

2

62

11

3

10x13 14x18 20x25 28x35 40x50 OTHER

45

557

810

1114

1620

SPECIAL INSTRUCTIONS

743 17a Cemetery, Bursa



Film No.

6630-10432
CEMETERY, BARRA

APR 83



Film No.

6630-10432
CEMETERY, BARRA

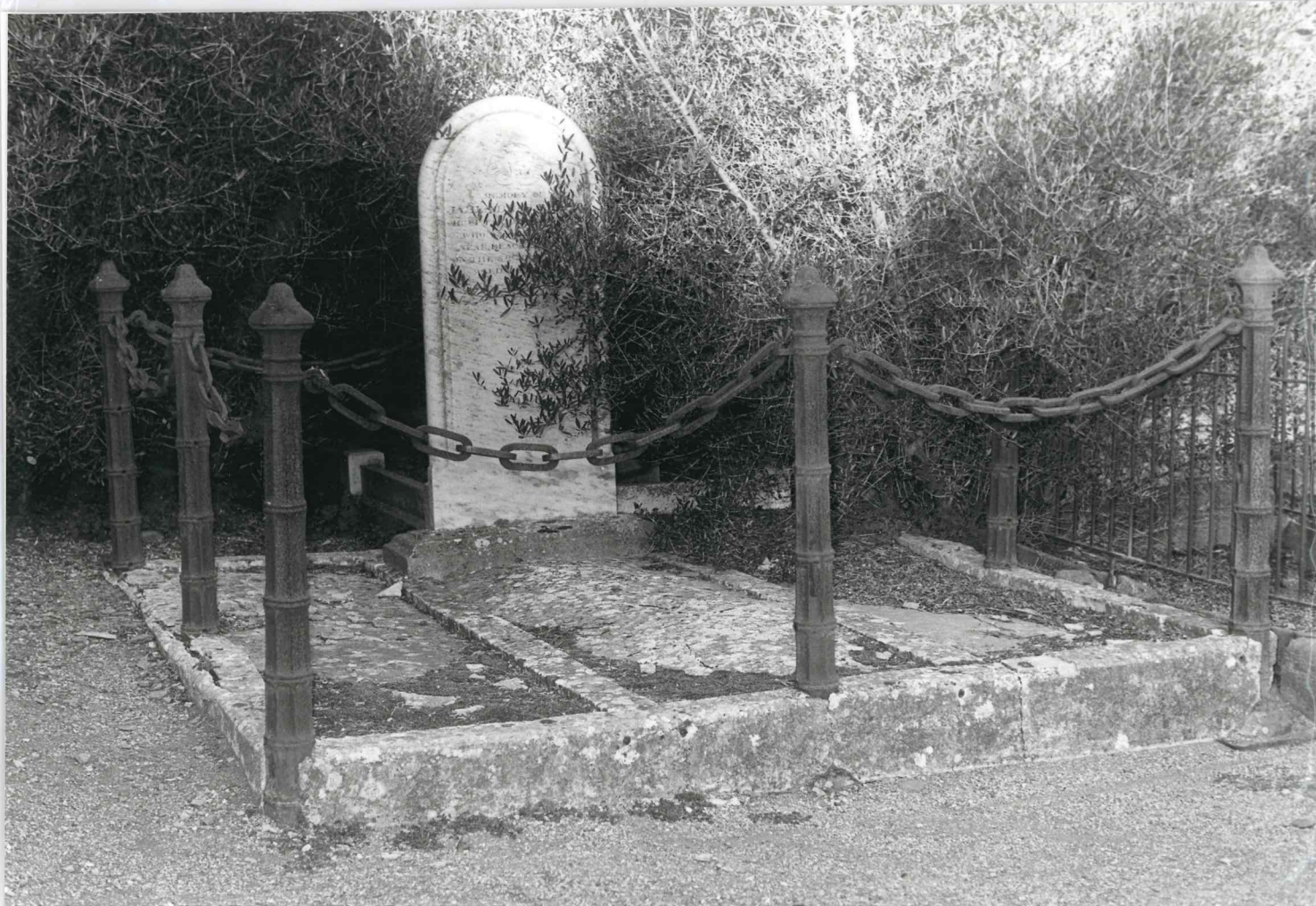
APR 83



FILM NO.

6630-10432
CEMETERY, BURRA

MAY 83



FILM NO.

6630-10432

APR 83



Film No.

6630-10430
CEMETERY, BURRA
TIMBER FENCE

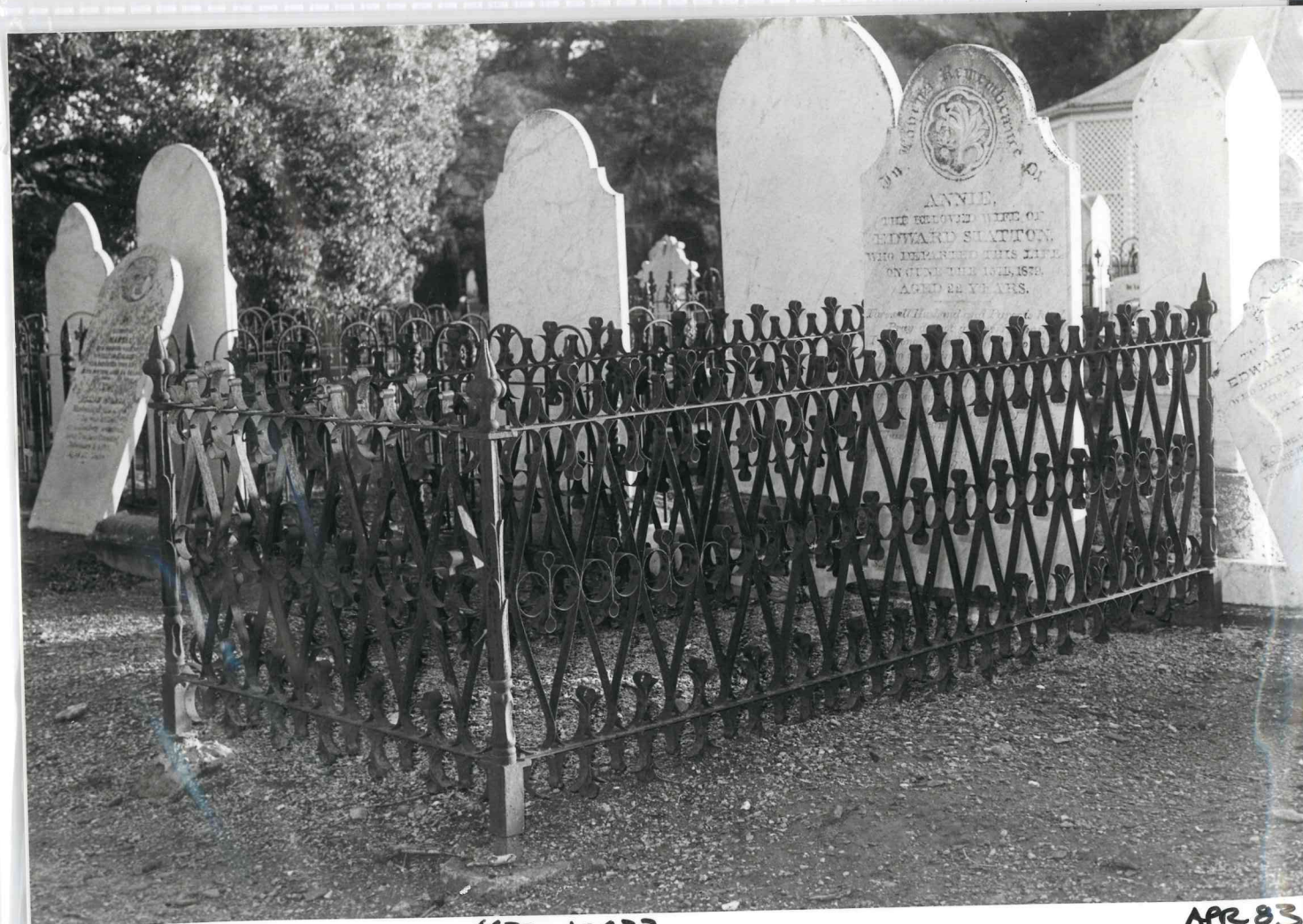




Film No.

6630-10432
CEMETERY, BURRA

APR 83



1124-10432

APR 83