

SUMMARY OF STATE HERITAGE PLACE

REGISTER ENTRY

Entry in the South Australian Heritage Register in accordance with the
Heritage Places Act 1993

NAME: Shelter Shed, Princess Elizabeth Children's Playground **PLACE NO.:** 26423

ADDRESS: South Terrace, Adelaide SA 5000
CR 6102/717 Section 6021 Hundred of Adelaide

STATEMENT OF HERITAGE SIGNIFICANCE

The Shelter Shed was built in 1929 as part of the Princess Elizabeth Children's Playground on South Terrace, Adelaide. The playground was constructed following the Royal visit to Adelaide by the Duke and Duchess of York in May 1927, and is representative of both the playgrounds movement and the increasing recognition of children's welfare and wellbeing during a period when supervised public playgrounds were developed for both play and personal improvement.

The Playground has been in continuous use as a children's playground for over 80 years, and alongside schools and kindergartens in the City, is one of Adelaide's few civic places dedicated for children's use.

RELEVANT CRITERIA (under section 16 of the *Heritage Places Act 1993*)

(a) it demonstrates important aspects of the evolution or pattern of the State's history.

The Shelter Shed, Princess Elizabeth Children's Playground is closely associated with a significant part in South Australian history; namely the playgrounds movement which stemmed from the increasing recognition of the importance of children's welfare and wellbeing. In the early twentieth century, the supervised public playground was regarded not only as a place for children to play but as a means for improving behaviour.

The Shelter Shed, Princess Elizabeth Children's Playground was established almost a decade after the first Glover Playground on South Terrace (1918). In the intervening years the Glover Playground at North Adelaide (1920), the redesigned West Terrace Playground (1924), and the Glover Playground at East Terrace (1925) were all built. Hence the Princess Elizabeth Children's Playground (1929) was one of the last of the first generation of playgrounds and is an important example of the earlier designs of playgrounds in South Australia.

The Princess Elizabeth Children's Playground illustrates the changing face of Adelaide, and especially the Adelaide Parklands, which began to include formal planned spaces for children. Designed places for children to play was transformed by child welfare and town planning advocates. Prior to that informal play had previously occurred on the streets.

The Princess Elizabeth Children's Playground has been in continuous use as a children's playground for over 80 years and alongside schools and kindergartens in the City, is one of the Adelaide's few civic places dedicated for children's use.

The first supervisor for the Princess Elizabeth Children's Playground, appointed by the Education Department, was Miss Grace Shannon, who was paid by the Adelaide City Corporation, as were subsequent appointees.

(b) It has rare, uncommon or endangered qualities that are of cultural significance.

The Shelter Shed in the Princess Elizabeth Children's Playground is one of the few surviving intact examples of such a structure.

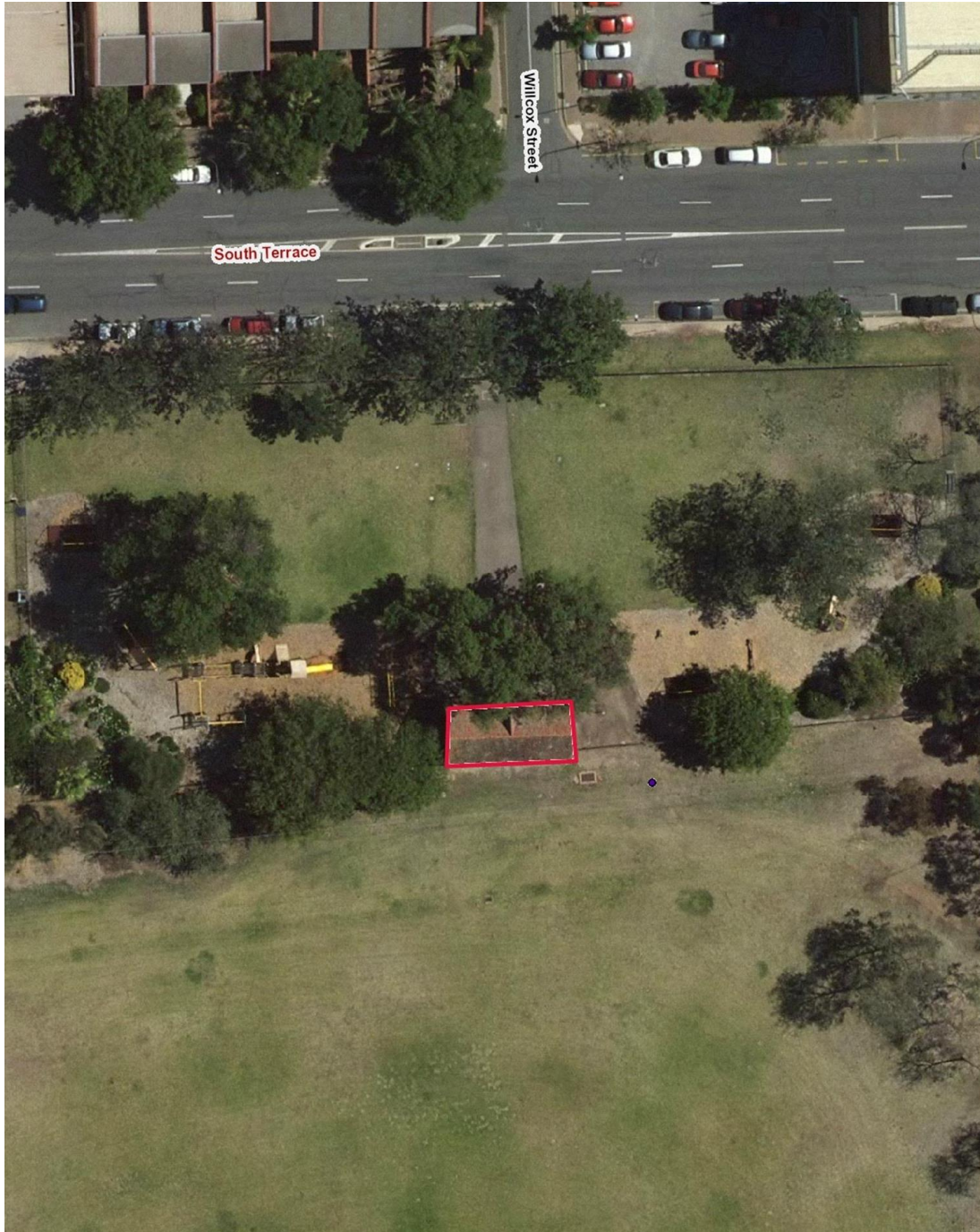
The Shelter Shed in 'Tudor Revival' style comprises a very small room for the supervisor, girls and boys toilets as well as verandah space for activities and games in inclement weather. The provision of supervisors in public children's playgrounds ended in the 1970s and as such the Playground's supervisor's office within the Shelter Shed provides built evidence of this now historical practice. The relationship between the Shelter Shed and the playground space is still intact.

The supervised playground, a North American invention, offered children a designated and safe play place under the care and direction of trained adults. Its development was linked to the rise of the health and education professions, in particular, and to increasing concern for the related issues of the welfare of children and the future of the nation.

SITE PLAN

Shelter Shed, Princess Elizabeth Children's Playground
Off South Terrace, Adelaide

PLACE NO: 26423



Shelter Shed, Princess Elizabeth Playground
Site plan generally indicating the important elements and features of the place
(outlined in red)

COMMENTARY ON THE LISTING

Description and notes with respect to a place entered in the South Australian Heritage Register in accordance with the *Heritage Places Act 1993*

Physical Description

The Shelter Shed at the Princess Elizabeth Children's Playground is a small red-brick 'Tudor Revival' style building comprising girls and boys toilets and what was originally the supervisor's office. An undercover verandah faces north. The roof is covered with terracotta tiles and has gable ends which are half-timbered to imitate the Tudor style.

Whilst the actual Princess Elizabeth Children's Playground, including modern play equipment and facilities, provides the setting for the Shelter Shed, it is not included as part of this State Heritage Place.

The components identified as being intrinsic to the heritage significance of the Shelter Shed at the Princess Elizabeth Children's Playground include:

- Red brick 'Tudor Revival' style small building comprising girls and a boys toilets and what was originally the supervisor's office
- Featuring terracotta tiled roof with half-timbered gable ends with a verandah on the north, east and west elevations

It excludes current day playground equipment, fencing, picnic and barbeque facilities, rubbish bins, drinking fountains, Cyclone mesh around the Shelter Shed, toilet pans, cisterns sinks and plumbing and electrical work in the Shelter Shed.

History of the Place

The Royal visit of the Duke and Duchess of York to Adelaide in May 1927 was the catalyst for the building of the Princess Elizabeth Children's Playground. Following the visit it was found that there was a surplus of funds raised by the Citizens' Committee and it was decided that these would be used for the establishment of a children's playground, on the understanding that the Adelaide City Council was to choose the site and maintain the playground. It was to be named the Princess Elizabeth Children's Playground.

A site was chosen on South Terrace, east of Goodwood Road, and the plans for the layout were prepared by City Gardener, August Pelzer and City Engineer, Ronald W Scott in July 1928. A Shelter Shed for the playground was designed by Scott at the

same time. In September 1928 tenders were called for the building of the Shelter Shed, with the successful tenderer being Messrs J King & Son.

The playground was opened on the 17 September 1929 by the Lady Mayoress, Mrs Bonython. On opening, the playground was on an acre of ground, laid out in lawns, shade trees, and flower beds, and equipped with playing apparatus. There are also a shelter shed, sanitary accommodation, wading pools, sand heaps, besides a well-built brick office for the supervisor.

Children from the Sturt Street School were frequent users of the Princess Elizabeth Children's Playground and remain so today.

References

The primary source for this Summary was:

- University of South Australia (Dr Julie Collins) 2013, Heritage Assessment Report 'Shelter Shed, Princess Elizabeth Children's Playground', commissioned by DEWNR.

Refer to the Heritage Assessment Report for more detailed information about the history of the Shelter Shed, Princess Elizabeth Children's Playground and references.

SITE DETAILS

Shelter Shed, Princess Elizabeth Children's Playground
Off South Terrace, Adelaide

PLACE NO: 26423

| | |
|-------------------------------------|---|
| FORMER NAME: | N/A |
| DESCRIPTION OF PLACE: | The shelter shed is a red brick 'Tudor Revival' style small building with terracotta tiled roof with half-timbered gable ends. |
| DATE OF COMPLETION: | 1929 |
| SA HERITAGE REGISTER STATUS: | Description: Confirmed Date: 7 March 2014 |
| LOCAL HERITAGE STATUS | N/A |
| CURRENT USE: | Description: Children's playground Dates: 1929 to present |
| PREVIOUS USE(S): | Description: N/A Dates: N/A |
| ARCHITECT: | Name: August Wilhelm Pelzer, City Gardener (Landscape Plan) Ronald W. Scott, City Engineer (Shelter Shed) Dates: 1928 |
| BUILDER: | Name: Messrs J. King & Son (Shelter Shed) Dates: 1929 |
| LOCAL GOVERNMENT AREA: | Description: Adelaide |
| LOCATION: | Unit No.: N/A Street No.: N/A Street Name: South Terrace Town/Suburb: Adelaide Post Code: 5000 |
| LAND DESCRIPTION: | Title Type: CR Volume: 6102 Folio: 717 Plan No.: H105100 Section: 6021 Hundred: Adelaide |

PHOTOS

Shelter Shed, Princess Elizabeth Children's Playground
Off South Terrace, Adelaide

PLACE NO: 26423



Entrance, Princess Elizabeth Children's Playground, South Terrace, Adelaide
View to the south



Shelter Shed, Princess Elizabeth Children's Playground, South Terrace, Adelaide
View from north-west