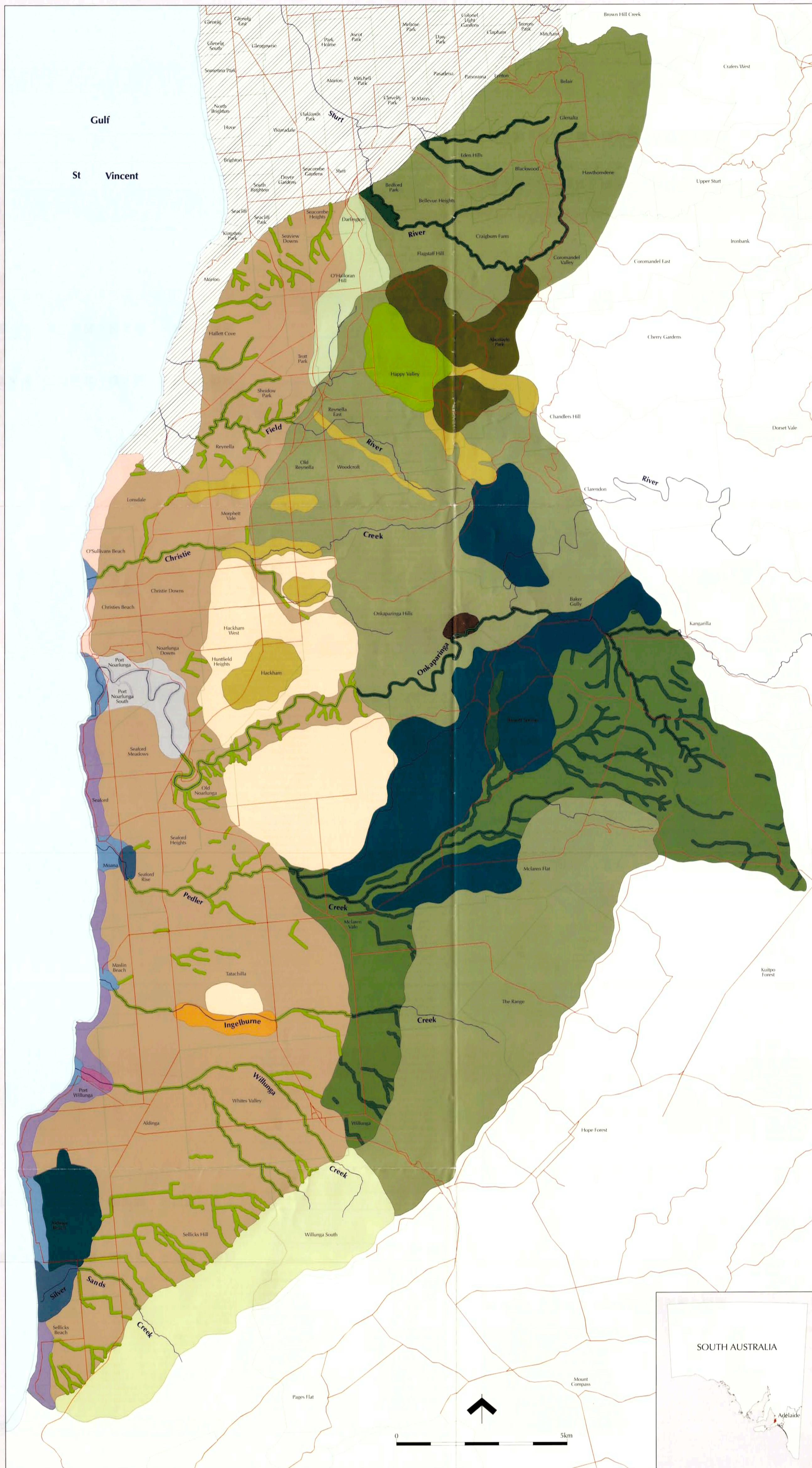


# WOODLANDS AND SHRUBLANDS OF THE SOUTHERN ADELAIDE REGION IN 1836

## A NATIVE VEGETATION PLANTING GUIDE



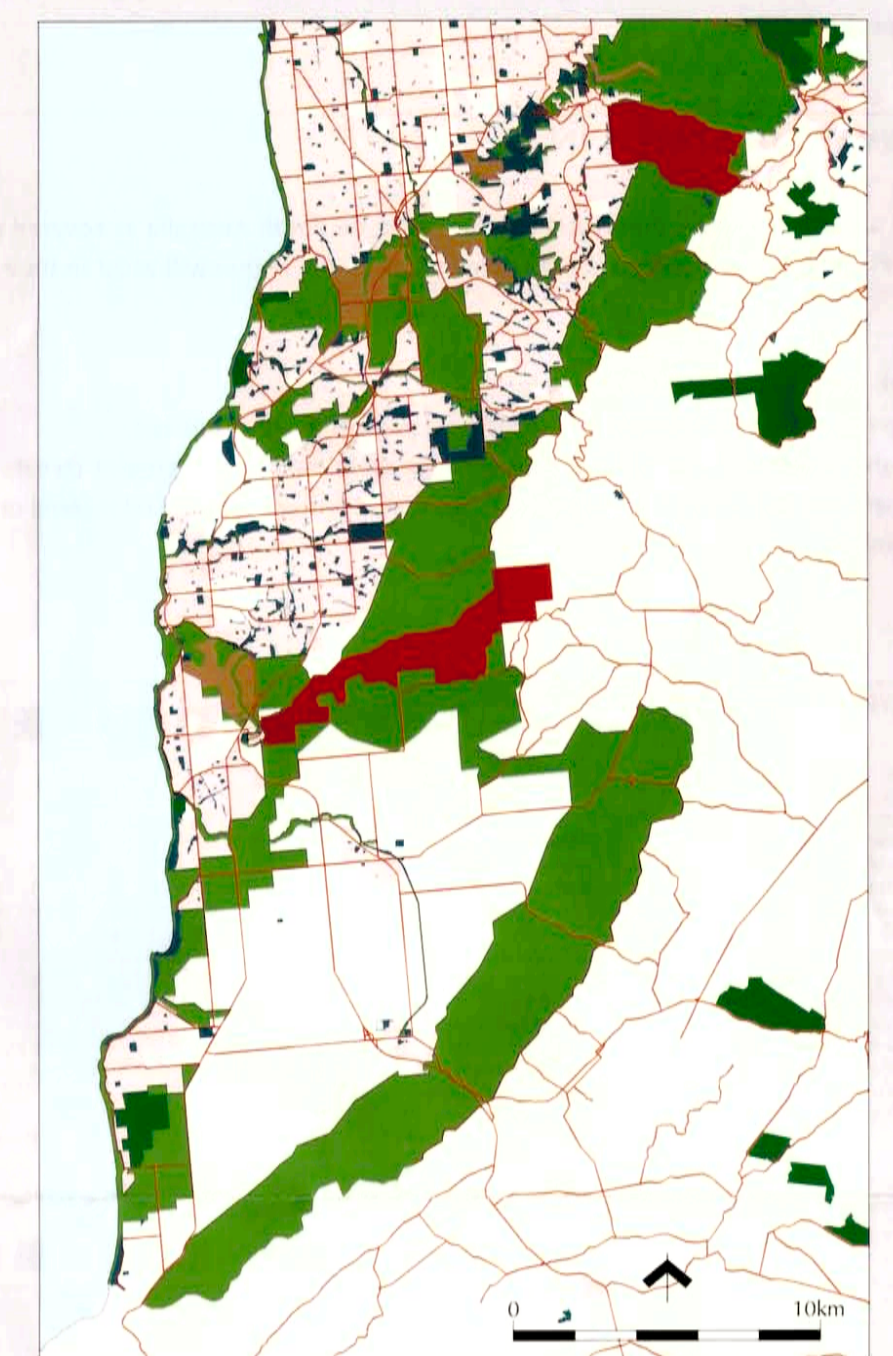
### How to use this Planting Guide:

This poster has been designed as a native vegetation planting guide. To use this map, locate an area of interest, such as your suburb, note the colour on the map and number in the corresponding key. This identifies the appropriate plant group. On the back of this poster find the number and colour to identify the plants indigenous to your area of interest. The plants have been listed under layer headings, such as trees, grasses, climbers or ground cover.

+/- Indicates that species can be either present or absent from the group

- WOODLANDS**
- 1** *Eucalyptus microcarpa* (grey box), +/- *Eucalyptus leucosylon* (South Australian blue gum) Woodland  
Soil Description: Heavy red brown clay to red brown clay  
Landscape Description: Foothills
  - 2** *Eucalyptus leucosylon* (South Australian blue gum), +/- *Banksia marginata* (silver banksia), +/- *Callitris gracilis* (southern cypress pine), +/- *Allocasuarina verticillata* (drooping sheoak) Woodland  
Soil Description: Grey to white-grey sands and sandy loams  
Landscape Description: Alluvial floodplains
  - 3** *Eucalyptus porosa* (mallee box), +/- *Eucalyptus microcarpa* (grey box), +/- *Allocasuarina verticillata* (drooping sheoak) Woodland  
Soil Description: Shallow red-brown to grey-brown soils with shale and limestone deposits  
Landscape Description: Foothills
  - 4** *Eucalyptus camaldulensis* (river red gum) over *Leptospermum lanigerum* (silky tea-tree), +/- *Melaleuca decussata* (totem-poles), +/- *Callistemon sieberi* (river bottlebrush) Woodland  
Soil Description: Sandy river soils  
Landscape Description: Rocky gorges, permanent creek lines
  - 5** *Eucalyptus camaldulensis* (river red gum) over *Juncus* spp. (rush) Open woodland  
Soil Description: Alluvial, black cracking clay soils  
Landscape Description: Watercourses
  - 6** *Eucalyptus porosa* (mallee box), *Melaleuca lanceolata* (dryland tea-tree), *Allocasuarina verticillata* (drooping sheoak) Open woodland  
Soil Description: Shallow red-brown loams over limestone  
Landscape Description: Plains
  - 7** *Eucalyptus porosa* (mallee box), *Callitris gracilis* (southern cypress pine), *Allocasuarina verticillata* (drooping sheoak), *Banksia marginata* (silver banksia) Open woodland  
Soil Description: Grey-brown sands over limestone  
Landscape Description: Base of foothills
  - 8** *Eucalyptus leucosylon* (South Australian blue gum), +/- *Eucalyptus camaldulensis* (river red gum), +/- *Eucalyptus microcarpa* (grey box) over *Allocasuarina verticillata* (drooping sheoak) Open woodland  
Soil Description: Red-brown terra rossa loams and black cracking clay loams  
Landscape Description: Flood plains
  - 9** *Banksia marginata* (silver banksia), *Allocasuarina verticillata* (drooping sheoak), *Callitris gracilis* (southern cypress pine), +/- *Banksia ornata* (desert banksia) Low woodland  
Soil Description: Yellow-brown to yellow-red deep sand deposits  
Landscape Description: Former coastal dunes
  - 10** *Eucalyptus fasciculosa* (pink gum), +/- *Eucalyptus leucosylon* (South Australian blue gum), +/- *Callitris gracilis* (southern cypress pine), +/- *Banksia ornata* (desert banksia), +/- *Banksia marginata* (silver banksia) Low woodland  
Soil Description: Deep white sands, with some laterite outcropping  
Landscape Description: Sandy rises in foothills
  - 11** *Eucalyptus porosa* (mallee box), *Eucalyptus odorata* (peppermint box), *Allocasuarina verticillata* (drooping sheoak), +/- *Eucalyptus microcarpa* (grey box), +/- *Eucalyptus leucosylon* (South Australian blue gum) Low woodland  
Soil Description: Shallow rocky-brown loams over limestone  
Landscape Description: Foothills of the range
  - 12** *Callitris rhomboidea* (Oyster Bay Pine) Low woodland  
Soil Description: Yellow-brown to yellow-grey rocky, skeletal soils with shale content  
Landscape Description: Onkaparinga Gorge
- SHRUBLANDS**
- 13** *Olearia axillaris* (coast daisy-bush), *Acacia longifolia* var. *sophorae* (coastal wattle) Tall shrubland  
Soil Description: Dune sand  
Landscape Description: Coastal dunes
  - 14** *Leptospermum lanigerum* (silky tea-tree) fringed by *Typha domingensis* (narrow-leaf bulrush), +/- *Phragmites australis* (common reed), +/- *Gahnia trifida* (cutting grass) Closed shrubland  
Soil Description: Black soils with high organic content  
Landscape Description: Creek lines and swamps
  - 15** *Myoporum insulare* (common boobialla) over *Cyperus* spp. (flat-sedge), +/- *Isolopis nodosa* (knobby club-rush), +/- *Typha* sp. (bulrush), *Bolboschoenus caldwellii* (salt club-rush) Shrubland  
Soil Description: Black cracking deep soils with high salt content  
Landscape Description: Coastal estuary
  - 16** *Beyeria lechenaultii* (pale turpentine bush), +/- *Calytrix tetragona* (common fringe-myrtle), +/- *Acacia cupularis* (cup wattle), +/- *Alysicarpus* spp. (sage), +/- *Santalum acuminatum* (quandong) with emergent *Eucalyptus porosa* (mallee box) Low shrubland  
Soil Description: Brown sandy to clayey soils often calcareous  
Landscape Description: Coastal cliffs
  - 17** *Allocasuarina verticillata* (drooping sheoak), +/- *Acacia cupularis* (cup wattle), +/- *Beyeria lechenaultii* (pale turpentine bush), +/- *Nitritaria billardierei* (nitre-bush) Low shrubland  
Soil Description: Brown sandy to clayey soils often calcareous  
Landscape Description: Coastal cliffs
  - 18** *Nitritaria billardierei* (nitre-bush), +/- *Maireana oppositifolia* (salt bluebush), +/- *Sarcocornia* spp. (samphire), +/- *Halosarcia* spp. (samphire), +/- *Atriplex paludosa* (marsh saltbush) Low shrubland  
Soil Description: Grey clays, and sands with high salt content  
Landscape Description: Coastal estuary
- SEDGELANDS**
- 19** *Gahnia filum* (smooth cutting-grass) +/- *Bolboschoenus caldwellii* (salt club-rush) fringed by *Muehlenbeckia florulenta* (lignum) Sedgeland  
Soil Description: Deep cracking light brown clay soils with high saline content, seasonally inundated  
Landscape Description: Former coastal lagoon and estuary
- Refer to the poster *Forests and Woodlands of the Adelaide Plains in 1836*

### OPEN SPACE AND RESERVE SYSTEM



- Metropolitan Open Space System
- Local Reserves
- Conservation Parks
- National Parks
- Recreation Parks
- Residential Areas

Metropolitan Open Space System (MOSS), shown above, is an initiative of State and Local Government to promote open space in the urban environment of Adelaide. MOSS incorporates all large areas of native vegetation remaining in the Adelaide region. Objectives of MOSS include providing assistance in the conservation of natural or semi-natural habitats and the provision of green corridors for wildlife.

### Woodlands and Shrublands of the Southern Adelaide Region in 1836

This map shows the native vegetation of the Southern Adelaide region as it probably was in 1836 at the time of European settlement. Very little of the plant cover in these areas still remains today. This map has been created using historic botanical records, extensive examination of small pockets of remaining vegetation throughout the Southern Adelaide region, and examining historic soils information and topography. This poster is a complimentary product to the *Forests and Woodlands of the Adelaide Plains in 1836: A Native Vegetation Planting Guide*, with the latter's southern extent represented on the main map with hatched shading.

The plant group boundaries shown on the map are approximate and provide an indication of where different plant groups are most likely to have occurred. In reality these boundaries would probably not have been as distinct, as areas such as forest, woodlands and grasslands often grade into each other.

### Soil and Landscape

Plant groups are generally correlated to a combination of soil type, topography or landscape and water availability. Each plant group is described with a soil and landscape description. The soils are derived from the map of Soil Associations of the Adelaide Region produced by the Department of Mines SA in 1972 and are a general description only. The top layer of soils in some areas may have been removed or altered and the current soil types may not be reflected in the descriptions given here. Some plant groups are closely associated with certain landscapes such as swamps, coastal cliffs or creek lines and these are described in the key.

**Produced by** Planning SA  
Department for Transport, Urban Planning and the Arts

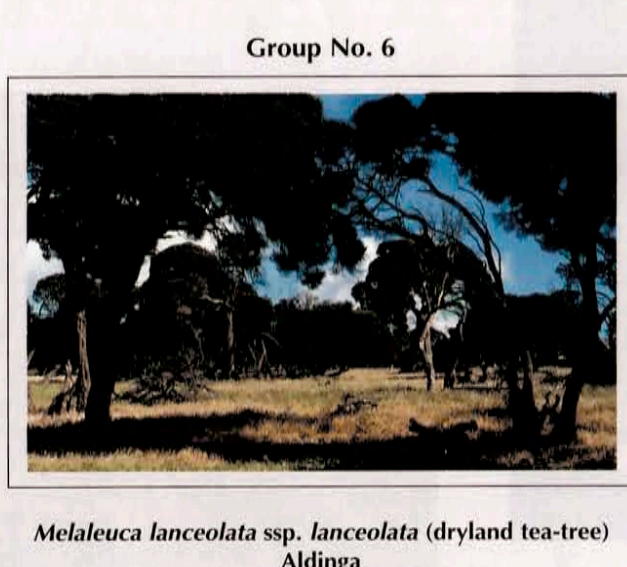
**Mapping and Interpretation** Darrell N Kraehenbuehl, Kate Smith, Jerry Smith, Matthew Turner and Felicity Smith

**Photographs** Darrell N Kraehenbuehl, Sue Kenny and Felicity Smith

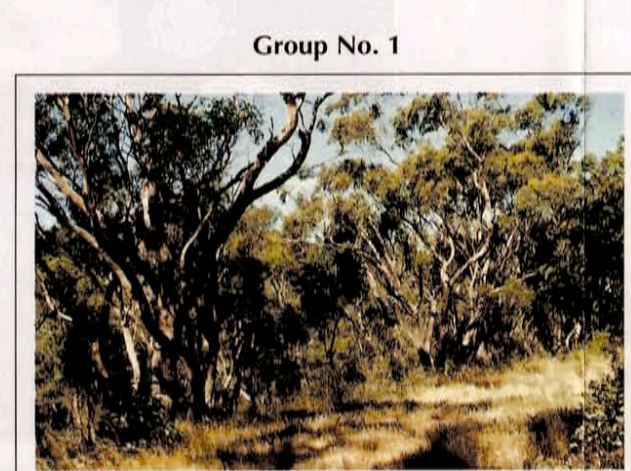
**Projection** Transverse Mercator  
**Map Published** May 2001

© Copyright Planning SA, Department for Transport, Urban Planning and the Arts 2001. All Rights Reserved. All works and information displayed are subject to Copyright. For the reproduction or publication beyond that permitted by the Copyright Act 1968 (Cwth) written permission must be sought from the Department.

Although every effort has been made to ensure the accuracy of the information displayed, the Department, its agents, officers and employees make no representations, either express or implied, that the information displayed is accurate or fit for any purpose and expressly disclaims all liability for loss or damage arising from reliance upon the information displayed.



Group No. 6  
*Melaleuca lanceolata* ssp. *lanceolata* (dryland tea-tree)  
Aldinga



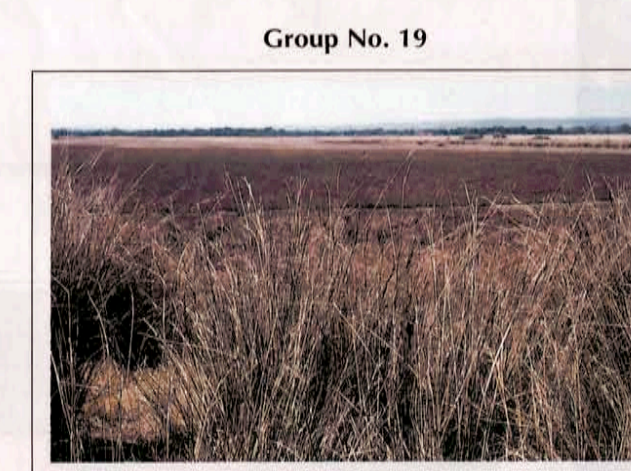
Group No. 1  
*Eucalyptus microcarpa* (grey box)  
Woodland Windy Point



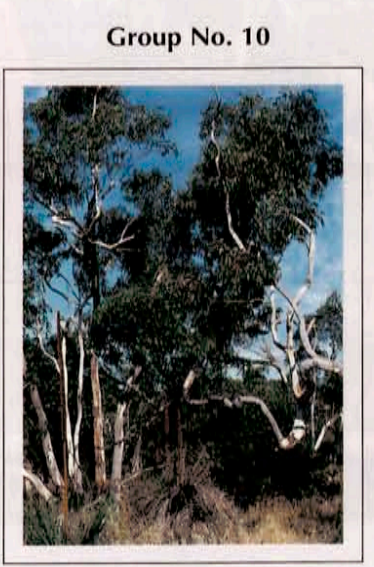
Group No. 14  
*Leptospermum lanigerum* (silky tea-tree) and  
*Phragmites australis* (common reed) Ingelburne Swamp



Group No. 17  
*Allocasuarina verticillata*  
(drooping sheoak) Coastal shrubland



Group No. 19  
*Gahnia filum* (smooth cutting-grass)  
Sedgeland Aldinga Washpool



Group No. 10  
*Eucalyptus fasciculosa* (pink gum)  
Low woodland Aldinga scrub

