

# **SIR JOSEPH BANKS GROUP MARINE PARK**

## **MANAGEMENT PLAN 2012**



**Government  
of South Australia**

Department of Environment,  
Water and Natural Resources



## Marine park management is important...

The Sir Joseph Banks Group Marine Park spans waters from just north of Bergs Beach to Point Bolingbroke and includes the islands of the Sir Joseph Banks Group and Dangerous Reef. It is one of 19 marine parks contributing to the South Australian Representative System of Marine Protected Areas.

This management plan has been made in accordance with section 14 of the *Marine Parks Act 2007*. It sets out a zoning scheme and management strategies for the Sir Joseph Banks Group Marine Park. The plan provides for the protection of marine and coastal biodiversity and life-sustaining ecological processes, the protection of natural, European and Aboriginal cultural heritage, as well as providing for ongoing ecologically sustainable development and use.

Community stewardship of marine parks is one of the keys to their success and this plan contains strategies to assist with community education, involvement and enjoyment of the park.

Many pieces of information and advice have informed the development of this management plan. I wish to thank members of the Sir Joseph Banks Group Marine Park Local Advisory Group, whose task was to facilitate early community advice to the Government to assist in the development of the zoning contained in this management plan. Members of the local community, peak stakeholders, the Marine Parks Council of South Australia, the Scientific Working Group and staff from South Australian Government agencies have also provided important advice.

I commend this plan to you. Further information about this plan and the background to its development are available on the Marine Parks website at [www.marineparks.sa.gov.au](http://www.marineparks.sa.gov.au) or freecall 1800 006 120.

Hon Paul Caica MP

**Minister for Sustainability, Environment and Conservation**



## Table of Contents

1.	INTRODUCTION .....	1
1.1.	Commitment to NRSMPA.....	1
1.2.	Planning context .....	1
1.2.1.	Management planning process .....	1
1.2.2.	Management plans and supporting documents .....	2
1.3.	Legislative context .....	2
1.4.	Management context .....	3
1.4.1.	Management tools.....	3
1.4.2.	Other management considerations.....	3
1.4.3.	Other policies, plans and strategies .....	4
2.	DESCRIPTION OF SIR JOSEPH BANKS GROUP MARINE PARK .....	5
2.1.	Location description.....	5
2.2.	Environmental, economic and social values.....	5
2.2.1.	Environmental values .....	6
2.2.2.	Economic values.....	6
2.2.3.	Social values .....	6
3.	MANAGEMENT CHALLENGES IN THE SIR JOSEPH BANKS GROUP MARINE PARK.....	7
3.1.	What are the particular management challenges?.....	7
4.	MANAGEMENT PRIORITIES AND STRATEGIES .....	8
4.1.	Protection .....	8
4.2.	Stewardship through community involvement.....	9
4.3.	Performance assessment, knowledge and review.....	9
4.4.	Compliance.....	10
5.	GUIDELINES FOR PERMITS .....	10
6.	ZONING SCHEME FOR THE SIR JOSEPH BANKS GROUP MARINE PARK .....	12
6.1.	Zoning.....	12
6.1.1.	General Managed Use Zones.....	12
6.1.2.	Habitat Protection Zones.....	13
6.1.3.	Sanctuary Zones.....	13
6.1.4.	Restricted Access Zones .....	13
6.2.	Boundary Definition Maps .....	13
7.	REFERENCES .....	14
	Appendix 1 Boundary Definition Maps .....	15



## **1. INTRODUCTION**

### **1.1. Commitment to NRSMPA**

The South Australian Government has developed the South Australian Representative System of Marine Protected Areas (SARSMPA) as part of the National Representative System of Marine Protected Areas (NRSMPA). Overarching policy documents for the SARSMPA include *South Australia's Strategic Plan 2011*, the *Living Coast Strategy for South Australia* (DEH 2004<sup>b</sup>) and the *Blueprint for the South Australian Representative System of Marine Protected Areas* (DEH 2004<sup>a</sup>). In conjunction with the community, the Government has designed a network of 19 marine parks encompassing the major ecosystems and habitat types found within South Australian waters as a significant contribution to the NRSMPA.

### **1.2. Planning context**

#### **1.2.1. Management planning process**

Late in 2009, 13 marine park local advisory groups (MPLAGs) were established across South Australia to provide an opportunity for communities to have early (pre-draft) input into the management planning process. The Great Australian Bight Marine Park Consultative Committee, with two additional members, also formed the equivalent of a MPLAG for the Far West Coast Marine Park, bringing the total number of local advisory groups to 14.

The Sir Joseph Banks Group MPLAG provided advice in relation to the Sir Joseph Banks Group Marine Park.

The establishment of MPLAGs reflects the Government's commitment to involve regional communities in the planning of marine parks in their local waters. MPLAGs were non-statutory, community-based advisory bodies set up to provide local advice to Government for the development of draft management plans. To help facilitate communications between the Government and regional communities, MPLAG meetings were open to the public. The MPLAG process provided invaluable advice relating to local uses of the marine environment and possible zoning arrangements for consideration in developing draft management plans.

In addition, peak stakeholder groups contributed advice both to MPLAG discussions and directly to Government. At a peak stakeholder forum on 11 and 12 April 2012, leaders from the conservation, recreational and commercial fishing sectors identified a series of priority areas for conservation and reached an agreement on the zoning approach for South Australia's network of marine parks.

Based on the collective advice from MPLAGs, other community members, peak stakeholders and discussions across relevant agencies, the Government developed draft management plans with zoning for each of the 19 marine parks for public review.

An eight week consultation process was conducted between 26 August and 22 October 2012. During this period written submissions were received from individuals and organisations in response to the draft zoning and management arrangements. These submissions have been considered in finalising this management plan.

### **1.2.2. Management plans and supporting documents**

This marine park management plan provides the statutory basis for the management of the Sir Joseph Banks Group Marine Park. It is a strategic document that defines the boundaries of the various zones and sets out strategies to address management challenges over the next 10 years or more.

An implementation plan will guide day-to-day management of the Sir Joseph Banks Group Marine Park in accordance with this management plan.

The South Australian Marine Parks Network Explanatory Document (DEWNR 2012) also provides:

- relevant context regarding the marine parks network; and
- an explanation of the challenges, priorities and strategies set out in South Australia's marine park management plans.

A Values Statement (DENR 2010) summarises the key environmental, economic and social values of the region.

### **1.3. Legislative context**

The *Marine Parks Act 2007* provides the legislative basis for marine parks. The Act establishes the management objectives for the network of marine parks and requires the development of management plans for each park.

The Act states that management plans:

- must be consistent with the objects of the Act, set out strategies for achieving those objects and establish the various types of zones for each marine park; and
- may define special purpose areas, direct the day-to-day management of issues associated with marine parks and provide guidelines for the granting of permits for various activities within marine parks.

All management activities within marine parks must be consistent with and seek to further the objects of the *Marine Parks Act 2007*, which are:

- (a) *to protect and conserve marine biological diversity and marine habitats by declaring and providing for the management of a comprehensive, adequate and representative system of marine parks; and*
- (b) *to assist in—*
  - (i) *the maintenance of ecological processes in the marine environment; and*



- (ii) *the adaptation to the impacts of climate change in the marine environment; and*
- (iii) *protecting and conserving features of natural or cultural heritage significance; and*
- (iv) *allowing ecologically sustainable development and use of marine environments; and*
- (v) *providing opportunities for public appreciation, education, understanding and enjoyment of marine environments.*

## **1.4. Management context**

### **1.4.1. Management tools**

#### *Multiple-use zoning*

Marine parks in South Australia have been zoned for multiple uses, providing for varying levels of conservation, recreational and commercial use. Zoning provides the basis for the management of marine parks, in accordance with the objects of the *Marine Parks Act 2007*.

*General Managed Use Zones (GMUZ)* enable areas to be managed to provide protection for habitats and biodiversity, while allowing ecologically sustainable development and use.

*Habitat Protection Zones (HPZ)* enable areas to be managed to provide protection for habitats and biodiversity, while allowing for activities and uses that do not harm habitats or the functioning of ecosystems.

*Sanctuary Zones (SZ)* enable areas to be managed to provide protection and conservation for habitats and biodiversity, especially by prohibiting the removal or harm of plants, animals or marine products.

*Restricted Access Zones (RAZ)* enable areas to be managed by limiting access to them.

(For further information see the zoning tables specifying restrictions in zones, available in the South Australian Marine Parks Network Explanatory Document or at [www.marineparks.sa.gov.au](http://www.marineparks.sa.gov.au))

*Special Purpose Areas (SPA)* are areas within marine parks overlaying a zone, or part of a zone, which allow specified activities in that area that would otherwise not be allowed.

Section 6 of this document identifies the type of zones in this marine park.

### **1.4.2. Other management considerations**

Government policy commitments have informed the design of the zoning for the Sir Joseph Banks Group Marine Park. These commitments were made to ensure that, wherever possible, marine park design for conservation minimised impacts on existing uses and activities in the marine environment.

A complete list of the commitments is available in the South Australian Marine Parks Network Explanatory Document or at [www.marineparks.sa.gov.au](http://www.marineparks.sa.gov.au)

#### **1.4.3. Other policies, plans and strategies**

The following matters have been taken into account in preparing this management plan, in accordance with section 13(2) of the *Marine Parks Act 2007*:

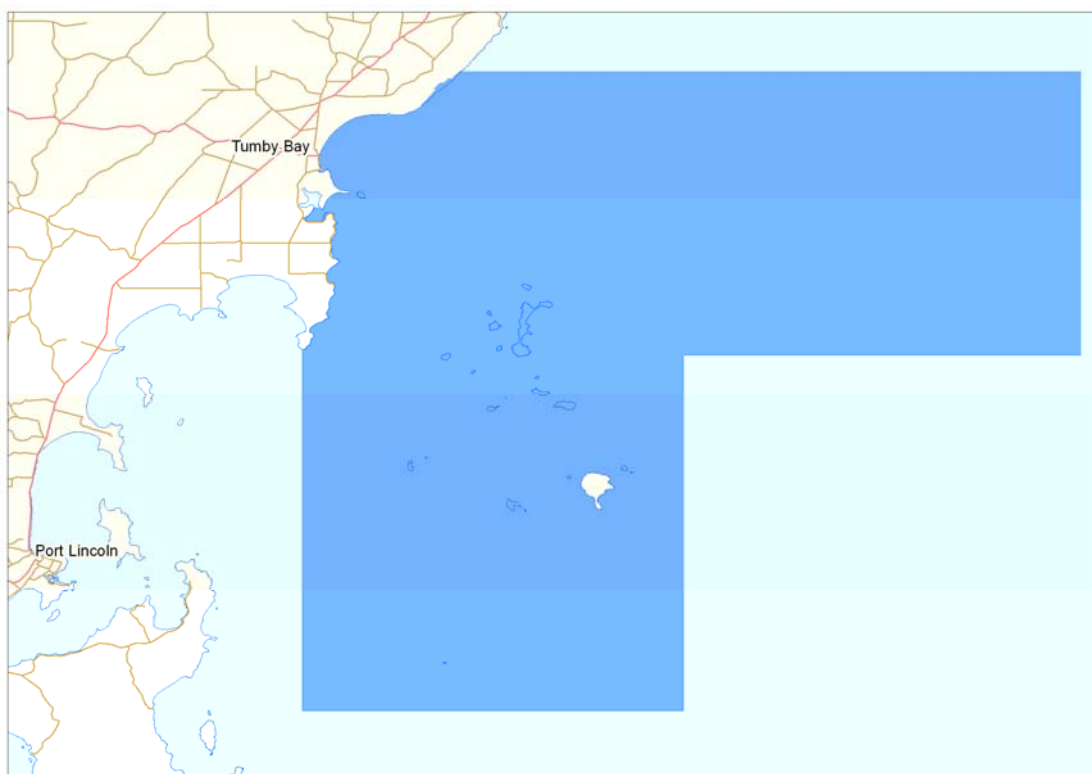
- the State's Strategic Plan;
- the Planning Strategy and relevant Development Plans under the *Development Act 1993*;
- the State NRM plan and any relevant regional NRM plans under the *Natural Resources Management Act 2004*;
- relevant environment protection policies under the *Environment Protection Act 1993*;
- relevant indigenous land use agreements; and
- provisions of any statutory instruments under related operational Acts.

Management actions within the Sir Joseph Banks Group Marine Park will be conducted in accordance with this management plan, as required by section 12 of the *Marine Parks Act 2007*, and all relevant laws of the State.

## 2. DESCRIPTION OF SIR JOSEPH BANKS GROUP MARINE PARK

### 2.1. Location description

Located in lower western Spencer Gulf and covering 2,627 km<sup>2</sup>, the Sir Joseph Banks Group Marine Park includes parts of the Eyre and Spencer Gulf Bioregions. The marine park is adjacent to Tumby Bay, and includes the islands of the Sir Joseph Banks Group and Dangerous Reef. It overlays two other protected areas, the Tumby Island Conservation Park and the Sir Joseph Banks Group Conservation Park (DENR 2010).



Location of Sir Joseph Banks Group Marine Park

### 2.2. Environmental, economic and social values

The following sections briefly summarise the key environmental, economic and social values of the region. A more comprehensive description of the values of this marine park can be found in *Environmental, Economic and Social Values of the Sir Joseph Banks Group Marine Park*, available at [www.marineparks.sa.gov.au](http://www.marineparks.sa.gov.au)

An atlas of maps containing environmental, economic and social/cultural information for this marine park has been produced as Part 2 of the Values Statement. The maps provide details specific to this park in a user-friendly visual format and may be viewed and downloaded from the marine parks website.

### **2.2.1. Environmental values**

The Sir Joseph Banks Group Marine Park encompasses a group of 20 low lying islands and waters adjacent to Tumby Bay, a Wetland of National Importance. The park contains various habitats including the islands, shallow reefs, sheltered sandy bays and rocky limestone shores, seagrass meadows, saltmarsh communities and deep water habitats of lower Spencer Gulf. These habitats support a wide range of flora and fauna including many species of national importance. Dangerous Reef hosts one of the largest breeding colonies of Australian sea lions in the world (Goldsworthy and Page 2009; Shaughnessy and Goldsworthy 2007) and pregnant female white sharks are often found in the area, perhaps due to the abundance of their sea lion prey. The iconic King George whiting utilises the area as breeding and nursery grounds and the endemic leafy seadragon inhabits the inshore seagrass beds (Baker 2004). The Sir Joseph Banks Group Marine Park also hosts a variety of invertebrate species and a number of bird species which are protected under international treaties (Baker 2004).

### **2.2.2. Economic values**

The Lower Eyre Peninsula aquaculture zone policy exists in this marine park. Southern bluefin tuna, mussels, abalone and other finfish farming occurs in the policy area.

The Western Zone Abalone Fishery, Northern Zone Rock Lobster Fishery, Spencer Gulf Prawn Fishery, Sardine Fishery, Marine Scalefish Fishery and Charter Fishery are commercial fisheries which operate within the Sir Joseph Banks Group Marine Park.

Tourism is an important economic contributor to the region. Key activities include recreational and charter fishing, charter sailing and diving, marine mammal watching and scenic cruises.

### **2.2.3. Social values**

The Naou-Barngarla Aboriginal people have traditional associations with areas of the marine park. The Barngala Native Title Claim (lodged in 1996) includes parts of the Sir Joseph Banks Group Marine Park.

Matthew Flinders explored the islands of the Sir Joseph Banks Group in 1802. Grazing and farming was later carried out until the 1960s when the group was declared a Conservation Park. Shipwrecks and building remains can be found within the marine park (Robinson *et al.* 1996).

The Sir Joseph Banks Group Marine Park is popular for recreational shore and boat fishing, diving, swimming, camping, sightseeing and beach activities.

### **3. MANAGEMENT CHALLENGES IN THE SIR JOSEPH BANKS GROUP MARINE PARK**

The management of our marine parks faces some important challenges, both natural and human induced. Key management challenges and threats to marine biodiversity are discussed broadly in South Australia's Marine Parks Network Explanatory Document.

The management challenges set out below were identified following consideration of the key environmental, economic and social values of the region as set out in the Values Statement for the Sir Joseph Banks Group Marine Park (DENR 2010). The strategies identified in section 4 guide marine park managers, stakeholders and the community in addressing the challenges.

Ultimately, marine park management state-wide will seek to address the broader conservation challenge: to maintain natural systems, processes and the biodiversity they support.

#### **3.1. What are the particular management challenges?**

- Ensuring effective conservation of protected species and ecological communities.
- Providing community education and opportunities for community involvement in marine park management.
- Ensuring effective compliance with this plan.
- Meeting Aboriginal community aspirations.
- Making the most of the visitor appeal of the region and managing visitation.
- Ensuring inflows from the land and the effects of development to meet increasing population needs do not have a detrimental effect on habitats and biodiversity.

## 4. MANAGEMENT PRIORITIES AND STRATEGIES

Management objectives for South Australia's marine parks are set out in the objects of the *Marine Parks Act 2007* (refer section 1.3 of this document). The Act requires management plans to set out strategies for achieving those objects in relation to the marine park.

Management plans for South Australia's marine parks have been developed around four management priorities with associated strategies, to directly support the achievement of the objects of the *Marine Parks Act 2007*. The strategies will guide marine park managers and inform the development of an implementation plan for each marine park, which will include more specific actions for day-to-day management.

### 4.1. Protection

Marine park zones are the principal tool under the *Marine Parks Act 2007* for managing both current and future activities that take place in marine parks. Management activities will be integrated to achieve multiple-use outcomes, in accordance with the objects and the four types of zones established by the Act.

#### Strategies

1. Manage activities and uses in the marine park in accordance with zoning and special purpose area provisions.
2. Actively influence activities and uses within and adjacent to the marine park to help mitigate threats to marine biodiversity and marine habitats.
3. Consider additional protections and/or temporary restrictions where necessary in circumstances of urgency —
  - (a) to protect a listed species<sup>1</sup> of plant or animal, or threatened ecological community; or
  - (b) to protect a feature of natural or cultural heritage significance; or
  - (c) to protect public safety.
4. Introduce a permitting system to provide for the following activities (where not otherwise authorised):
  - scientific research in a sanctuary or restricted access zone;
  - tourism operations in a sanctuary zone;
  - competitions and organised events in a sanctuary zone;
  - commercial film-making (including sound recording and photography) in a sanctuary zone; and
  - installation of vessel moorings in a sanctuary zone.

---

<sup>1</sup> "listed species" and "threatened ecological community" refers to species or ecological communities of conservation concern listed under the *Environment Protection and Biodiversity Conservation Act 1999* (Commonwealth), the *National Parks and Wildlife Act 1972* or the *Fisheries Management Act 2007*.

## 4.2. Stewardship through community involvement

Providing opportunities for public appreciation, involvement, education, understanding and enjoyment of marine environments is central to the success of South Australia's marine parks network and is integral to the implementation of marine park management plans.

### Strategies

5. Provide for public appreciation, understanding and enjoyment of the marine park.
6. Create and promote opportunities for sustainable nature-based tourism in the marine park.
7. Provide education to support the implementation of the marine park.
8. Seek to involve local communities and stakeholders in the day-to-day management and monitoring of the marine park.
9. Work cooperatively with Aboriginal communities to conserve country, plants, animals and culture.

## 4.3. Performance assessment, knowledge and review

A monitoring, evaluation and reporting (MER) program will be implemented to assess the effectiveness of this plan in achieving the objects of the *Marine Parks Act 2007*. Under the Act, the Minister is required to review marine park management plans within a 10 year period. The MER Program will provide critical environmental, economic and social information to inform management plan review.

The marine environment is complex and challenging to study. It also supports a range of uses that fill diverse community needs. Good marine park management decisions are informed by an in-depth understanding of the environment and the impacts of the activities that take place within it.

### Strategies

10. Develop and implement a monitoring, evaluation and reporting (MER) program that measures the effectiveness of this marine park management plan and its contribution to South Australia's marine parks network (2011 baseline), and that:
  - is designed to measure the effectiveness of the management plan in delivering the predicted outcomes to inform adaptive management;
  - includes linkages to relevant state, national and international monitoring, evaluation and reporting frameworks;
  - sets out targets and indicators linked to strategies and outcomes for monitoring, which include ecological, socio-economic, environmental and management elements;
  - monitors the delivery of education, research and governance mechanisms; and

- assesses the effectiveness of compliance activities.
11. Foster partnerships to support the implementation of the MER Program incorporating opportunities for community and stakeholder involvement.
  12. Ensure outcomes of the MER Program and research outcomes are made publicly available and inform decision making and periodic review of this management plan.
  13. Conduct priority research and foster research partnerships to assess the integrity of knowledge frameworks that underpin the predicted outcomes.
  14. Encourage Aboriginal people, local communities and stakeholders to preserve traditional and historic knowledge and, where appropriate, share this knowledge with others.

#### **4.4. Compliance**

The *Marine Parks Act 2007* provides for a range of regulatory instruments to support the achievement of the Act's objects. Compliance with these instruments is vital to the success of the marine parks program.

Three guiding principles underpin marine park compliance:

- voluntary compliance is maximised through education initiatives;
- across Government collaboration supports compliance; and
- operational improvement is achieved through monitoring and review of compliance activity.

#### **Strategies**

15. Develop and implement a compliance strategy for the marine park that:
  - is cost-efficient;
  - is focussed on sanctuary zones and other conservation priorities;
  - complements existing compliance efforts;
  - maximises voluntary compliance; and
  - includes measures to address serious or repeat non-compliance.

### **5. GUIDELINES FOR PERMITS**

The Minister may grant a permit to a person to engage in an activity within a marine park, or a zone or other area of a marine park, that would otherwise be prohibited or restricted.

A management plan for a marine park may provide guidelines with respect to the granting of permits for various activities that might be allowed within the park (section 13(1)(e) of the *Marine Parks Act 2007*). All applications for permits will be considered on a case-by-case basis, in accordance with section 19 of the *Marine Parks Act 2007*.



Favourable consideration should be given to the granting of permits for the following activities within the marine park:

- scientific research in a sanctuary zone or restricted access zone;
- competitions and organised events in a sanctuary zone;
- tourism operations in a sanctuary zone;
- commercial film making (including sound recording and photography) in a sanctuary zone; and
- installation of vessel moorings in a sanctuary zone.

Permits for other activities will be considered on merit, against the management objectives for the marine park.

## 6. ZONING SCHEME FOR THE SIR JOSEPH BANKS GROUP MARINE PARK

The *Marine Parks Act 2007* (section 13(1)) requires that management plans:

- must establish the various types of zones within the park and define their boundaries; and
- may identify and define the boundaries of special purpose areas within the park and set out the activities that will be permitted in the areas.

The following section, along with the boundary definition maps in Appendix 1, fulfils this requirement.

### 6.1. Zoning

For the purposes of the *Marine Parks Act 2007*, a zone is an area within a marine park that:

- (a) has boundaries defined by the management plan for the marine park; and
- (b) is identified by the management plan as a particular type of zone depending on the degree of protection required within the area.

The *Marine Parks Act 2007* makes provision for the following types of marine park zones:

- (a) a general managed use zone – being a zone established so that an area may be managed to provide protection for habitats and biodiversity within a marine park, while allowing ecologically sustainable development and use – refer section 6.1.1;
- (b) a habitat protection zone – being a zone primarily established so that an area may be managed to provide protection for habitats and biodiversity within a marine park, while allowing activities and uses that do not harm habitats or the functioning of ecosystems – refer section 6.1.2;
- (c) a sanctuary zone – being a zone primarily established so that an area may be managed to provide protection and conservation for habitats and biodiversity within a marine park, especially by prohibiting the removal or harm of plants, animals or marine products – refer section 6.1.3; and
- (d) a restricted access zone – being a zone primarily established so that an area may be managed by limiting access to the area - refer section 6.1.4.

The prohibitions or restrictions on activities and uses in the various zones are set out in the zoning tables, available in the South Australian Marine Parks Network Explanatory Document or at [www.marineparks.sa.gov.au](http://www.marineparks.sa.gov.au)

#### 6.1.1. General Managed Use Zones

The following areas are identified as general managed use zones in accordance with section 13(1)(b) of the *Marine Parks Act 2007*:

- (a) the area defined in map 05 and referred to as GMUZ-1;
- (b) the area defined in map 05 and referred to as GMUZ-2;

- (c) the area defined in map 05 and referred to as GMUZ-3; and
- (d) the area defined in map 05 and referred to as GMUZ-4.

#### **6.1.2. Habitat Protection Zones**

The following areas are identified as habitat protection zones in accordance with section 13(1)(b) of the *Marine Parks Act 2007*:

- (a) the area defined in map 01 and referred to as HPZ-1; and
- (b) the area defined in map 05 and referred to as HPZ-2.

#### **6.1.3. Sanctuary Zones**

The following areas are identified as sanctuary zones in accordance with section 13(1)(b) of the *Marine Parks Act 2007*:

- (a) the area defined in map 01 and referred to as SZ-1;
- (b) the area defined in map 02 and referred to as SZ-2;
- (c) the area defined in map 02 and referred to as SZ-3;
- (d) the area defined in map 03 and referred to as SZ-4; and
- (e) the area defined in map 04 and referred to as SZ-5.

#### **6.1.4. Restricted Access Zones**

The following area is identified as a restricted access zone in accordance with section 13(1)(b) of the *Marine Parks Act 2007*:

- (a) the area defined in map 04 and referred to as RAZ-1.

### **6.2. Boundary Definition Maps**

The zones identified above are defined in Boundary Definition Sir Joseph Banks Group Marine Park Maps 00 – 05 (refer Appendix 1).

## 7. REFERENCES

Baker, J.L. 2004 *Towards a System of Ecologically Representative Marine Protected Areas in South Australian Marine Bioregions* - Technical Report. Prepared for Coast and Marine Conservation Branch, Department for Environment and Heritage, South Australia.

Department for Environment and Heritage 2004<sup>a</sup> *Blueprint for the South Australian Representative System of Marine Protected Areas*. Department for Environment and Heritage, Adelaide, South Australia.

Department of Environment and Heritage 2004<sup>b</sup> *Living Coast Strategy for South Australia*. Prepared by Coast and Marine Conservation Branch, Natural and Cultural Heritage, Department for Environment and Heritage for the Government of South Australia.

Department of Environment and Natural Resources 2010 *Environmental, Economic and Social Values of the Sir Joseph Banks Group Marine Park Part 1*. Department of Environment and Natural Resources, South Australia.

Department of Environment, Water and Natural Resources 2012 *South Australia's Marine Parks Network Explanatory Document*. Department of Environment, Water and Natural Resources, South Australia.

Department of the Premier and Cabinet 2011 *South Australia's Strategic Plan 2011*. Department of the Premier and Cabinet, Adelaide, South Australia.

Goldsworthy, S.D. and Page, B. 2009 *A review of the distribution of seals in South Australia*. Report to the Department of the Environment, Water, Heritage and Arts. SARDI Publication Number F209/000368-1. SARDI Research Report Series Number 373.

Robinson, A.C., Canty, P., Mooney, P. & Rudduck, P. 1996 *South Australia's Offshore Islands*. Australian Heritage Commission and Department of Environment and Natural Resources, South Australia.

Shaughnessy, P.D. and Goldsworthy S.D. 2007 *Population assessment of fur seal and sea lions at some colonies in South Australia, 2006-2007*. Final report to the Department for Environment and Heritage, South Australia and the South Australian Wildlife Conservation Fund. SARDI Aquatic Sciences Publication Number: F2007/000750-1. SARDI Research Report Series Number: 236, 43pp.

## Appendix 1 Boundary Definition Maps

# South Australian Marine Park Zoning

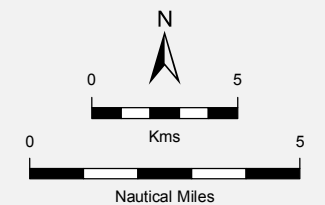
## Boundary Definition Sir Joseph Banks Group Marine Park Map 00

### Marine Park Zoning

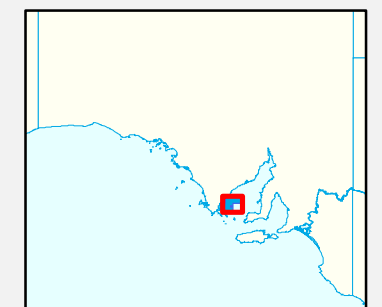
- Restricted Access Zone
- Sanctuary Zone
- Habitat Protection Zone
- General Managed Use Zone

### Topographic

- Marine Park Boundary
- Coastline (median high water)
- Major Road



THIS MAP IS INDICATIVE ONLY AND IS NOT INTENDED FOR NAVIGATIONAL PURPOSES



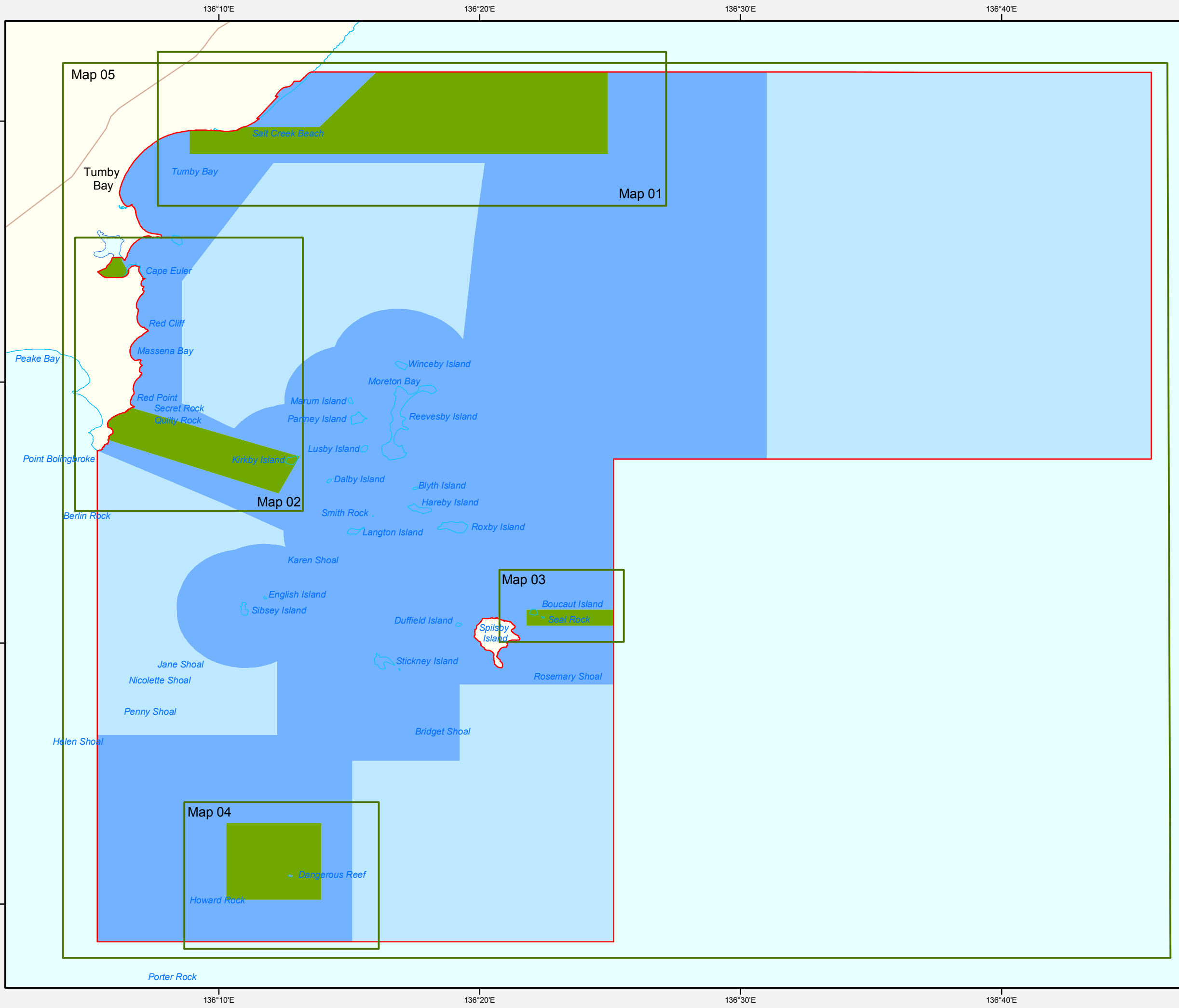
**Produced by** Marine Parks Project  
Department of Environment, Water and Natural Resources  
GPO BOX 1047 Adelaide SA 5001  
[www.marineparks.sa.gov.au](http://www.marineparks.sa.gov.au)

**Data Source** Marine Parks, Topographic Data,  
Coastline (median high water) - DEWNR  
(dataset #807, Topography - Coastline, last updated April 2011)  
29 October 2012

**Compiled Projection Datum** Geographic  
Geocentric Datum of Australia, 1994

© Copyright Department of Environment, Water and Natural Resources 2012.  
All Rights Reserved. All works and information displayed are subject to Copyright. For the reproduction or publication beyond that permitted by the Copyright Act 1968 (Cwth) written permission must be sought from the Department.

Although every effort has been made to ensure the accuracy of the information displayed, the Department, its agents, officers and employees make no representations, either express or implied, that the information displayed is accurate or fit for any purpose and expressly disclaims all liability for loss or damage arising from reliance upon the information displayed.



# South Australian Marine Park Zoning

## Boundary Definition Sir Joseph Banks Group Marine Park Map 01 Sanctuary Zone 1 Habitat Protection Zone 1

### Explanatory Notes:

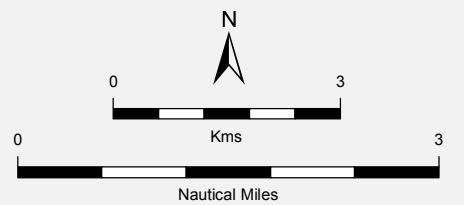
- The coastal boundary of the park is the median high water mark (including the median high water mark of any estuaries), except where-
  - the boundary extends inland from median high water mark to include in the park the areas specified in Schedules 1 and 2 of Rack Plan 1918; and
  - the boundary extends seaward from median high water mark to exclude from the park the areas specified in Schedule 3 of Rack Plan 1918.
- Unless otherwise specified, the seaward boundary of the park is the seaward boundary of the coastal waters of the State.

### Marine Park Zoning

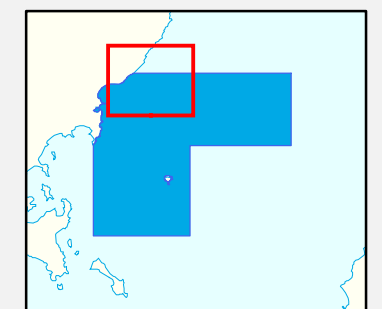
- Sanctuary Zone
- Habitat Protection Zone
- General Managed Use Zone

### Topographic

- Existing Reserves under other Acts
- Marine Park Boundary
- DCDB Parcel
- Coastline (median high water)
- Sealed Road
- Unsealed Road



THIS MAP IS INDICATIVE ONLY AND IS NOT INTENDED FOR NAVIGATIONAL PURPOSES



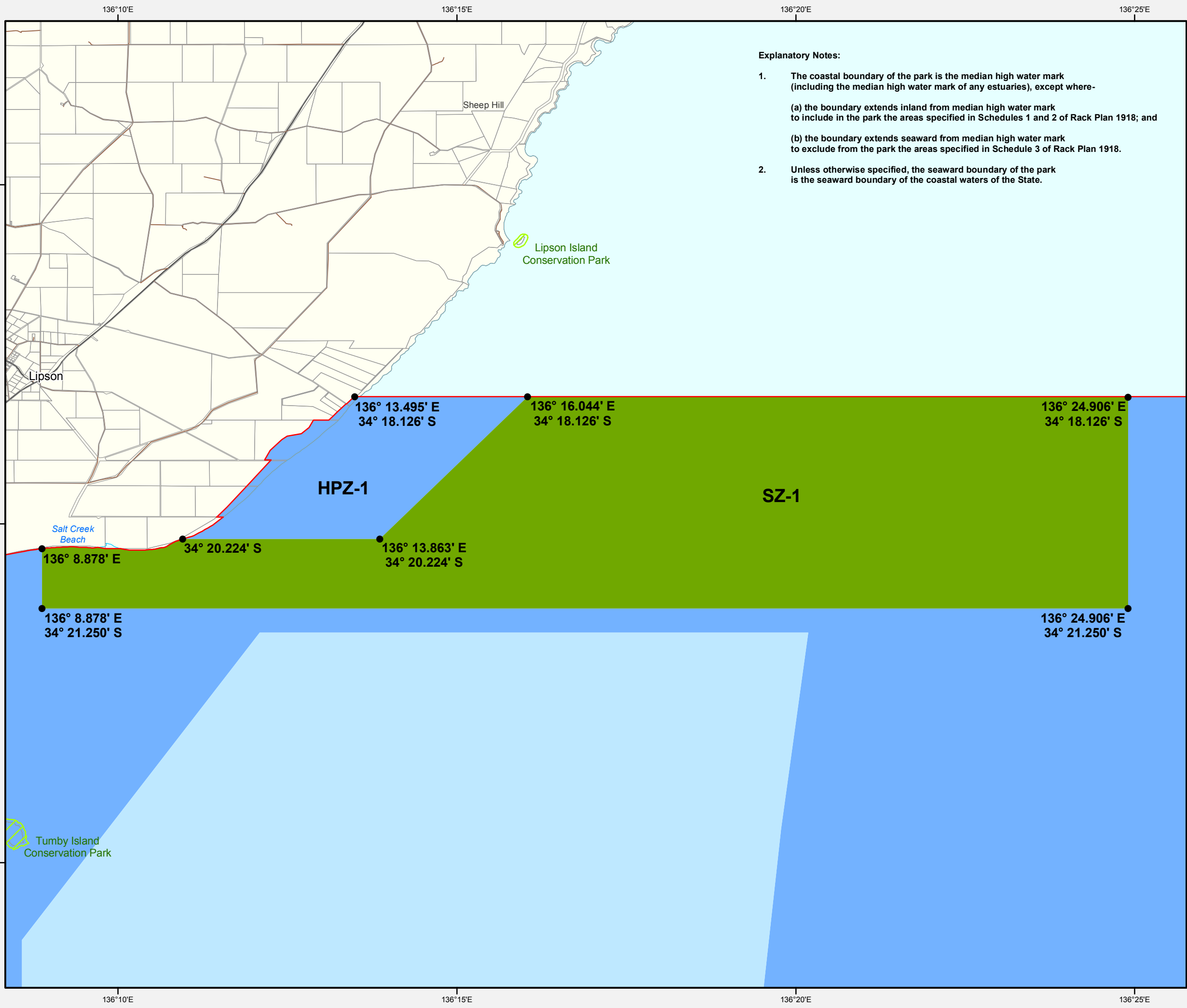
**Produced by** Marine Parks Project  
Department of Environment, Water and Natural Resources  
GPO BOX 1047 Adelaide SA 5001  
[www.marineparks.sa.gov.au](http://www.marineparks.sa.gov.au)

**Data Source** Marine Parks, NPWSA, Topographic Data, Coastline (median high water) - DEWNR (dataset #807, Topography - Coastline, last updated April 2011)  
DCDB - DPTI

**Compiled** 2 November 2012  
**Projection** Geographic  
**Datum** Geocentric Datum of Australia, 1994

© Copyright Department of Environment, Water and Natural Resources 2012. All Rights Reserved. All works and information displayed are subject to Copyright. For the reproduction or publication beyond that permitted by the Copyright Act 1968 (Cwth) written permission must be sought from the Department.

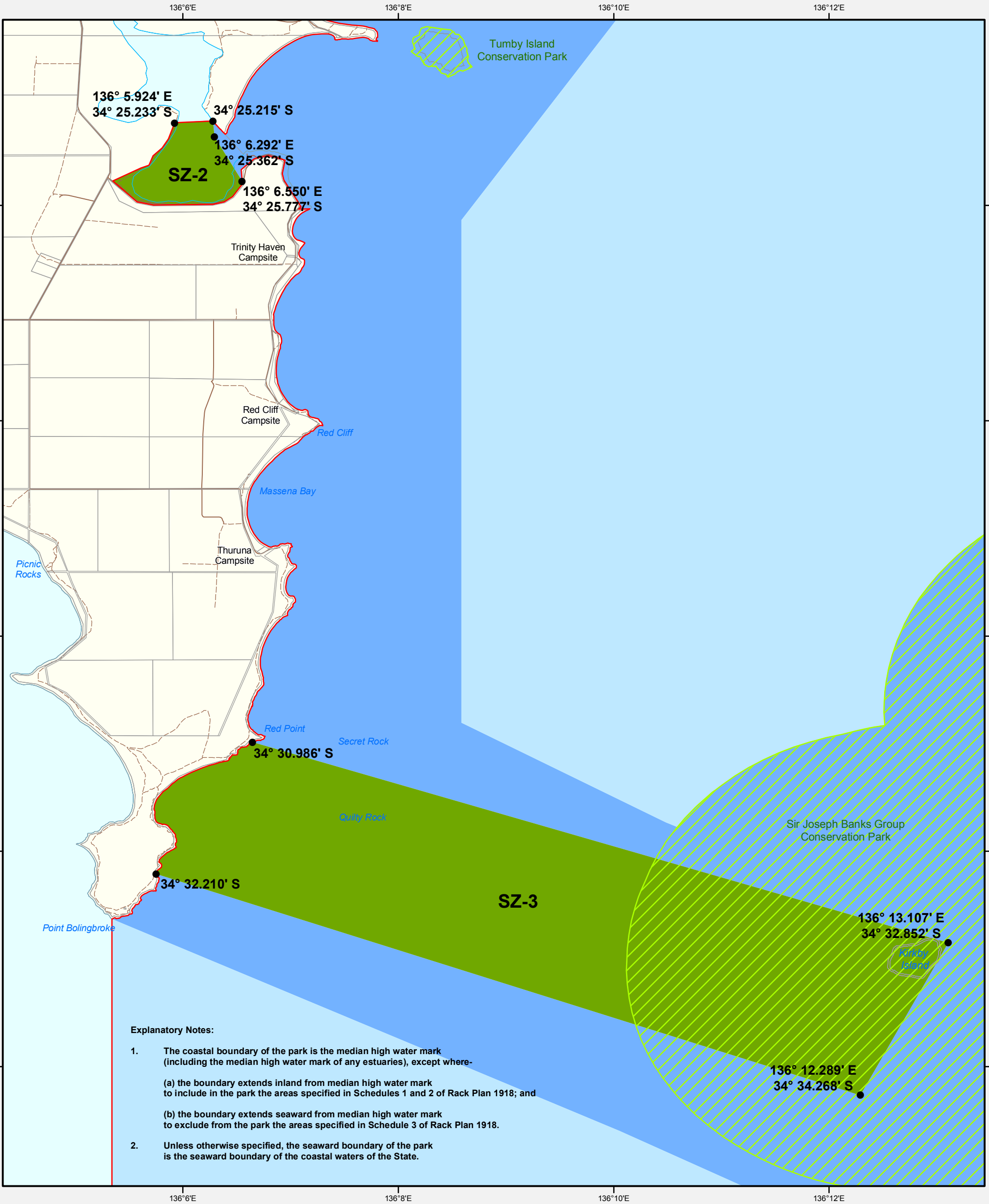
Although every effort has been made to ensure the accuracy of the information displayed, the Department, its agents, officers and employees make no representations, either express or implied, that the information displayed is accurate or fit for any purpose and expressly disclaims all liability for loss or damage arising from reliance upon the information displayed.



# South Australian Marine Park Zoning

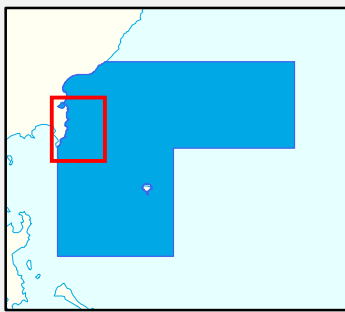
## Boundary Definition - Sir Joseph Banks Group Marine Park

### Map 02 - Sanctuary Zones 2, 3



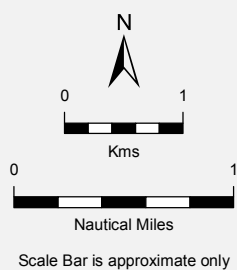
**Explanatory Notes:**

1. The coastal boundary of the park is the median high water mark (including the median high water mark of any estuaries), except where-
  - (a) the boundary extends inland from median high water mark to include in the park the areas specified in Schedules 1 and 2 of Rack Plan 1918; and
  - (b) the boundary extends seaward from median high water mark to exclude from the park the areas specified in Schedule 3 of Rack Plan 1918.
2. Unless otherwise specified, the seaward boundary of the park is the seaward boundary of the coastal waters of the State.



THIS MAP IS INDICATIVE ONLY AND IS NOT INTENDED FOR NAVIGATIONAL PURPOSES

Marine Park Zoning	Topographic
<span style="display: inline-block; width: 15px; height: 10px; background-color: #4CAF50; border: 1px solid black;"></span> Sanctuary Zone	<span style="display: inline-block; width: 15px; height: 10px; border: 1px dashed #FFD700;"></span> Existing Reserves under other Acts
<span style="display: inline-block; width: 15px; height: 10px; background-color: #ADD8E6; border: 1px solid black;"></span> Habitat Protection Zone	<span style="display: inline-block; width: 15px; height: 10px; border: 1px solid red;"></span> Marine Park Boundary
<span style="display: inline-block; width: 15px; height: 10px; background-color: #ADD8E6; border: 1px solid black;"></span> General Managed Use Zone	<span style="display: inline-block; width: 15px; height: 10px; border: 1px solid gray;"></span> DCDB Parcel
	<span style="display: inline-block; width: 15px; border-bottom: 1px solid blue;"></span> Coastline (median high water)
	<span style="display: inline-block; width: 15px; border-bottom: 1px dashed brown;"></span> Unsealed Road
	<span style="display: inline-block; width: 15px; border-bottom: 1px dashed black;"></span> Vehicular Track



**Produced by** Marine Parks Project  
 Department of Environment, Water and Natural Resources  
 GPO BOX 1047 Adelaide SA 5001  
[www.marineparks.sa.gov.au](http://www.marineparks.sa.gov.au)

**Data Source** Marine Parks, NPWSA, Topographic Data, Coastline (median high water) - DEWNR (dataset #807, Topography - Coastline, last updated April 2011)  
 DCDB - DPTI

**Compiled Projection Datum** 2 November 2012  
 Geographic  
 Geocentric Datum of Australia, 1994

© Copyright Department of Environment, Water and Natural Resources 2012. All Rights Reserved. All works and information displayed are subject to Copyright. For the reproduction or publication beyond that permitted by the Copyright Act 1968 (Cwth) written permission must be sought from the Department.

Although every effort has been made to ensure the accuracy of the information displayed, the Department, its agents, officers and employees make no representations, either express or implied, that the information displayed is accurate or fit for any purpose and expressly disclaims all liability for loss or damage arising from reliance upon the information displayed.



# South Australian Marine Park Zoning

## Boundary Definition Sir Joseph Banks Group Marine Park Map 03 Sanctuary Zone 4

### Explanatory Notes:

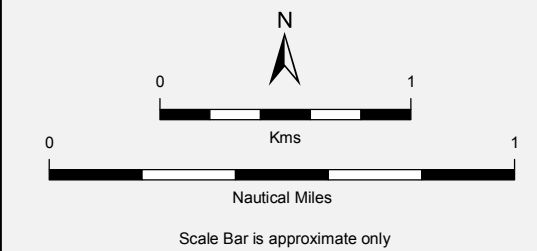
1. The coastal boundary of the park is the median high water mark (including the median high water mark of any estuaries), except where-
  - (a) the boundary extends inland from median high water mark to include in the park the areas specified in Schedules 1 and 2 of Rack Plan 1918; and
  - (b) the boundary extends seaward from median high water mark to exclude from the park the areas specified in Schedule 3 of Rack Plan 1918.
2. Unless otherwise specified, the seaward boundary of the park is the seaward boundary of the coastal waters of the State.

### Marine Park Zoning

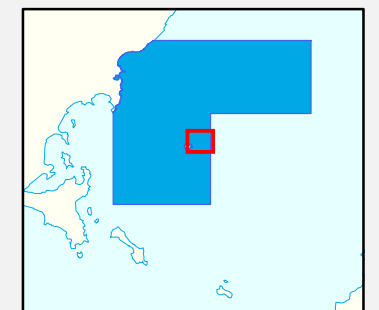
- Sanctuary Zone
- Habitat Protection Zone

### Topographic

- Existing Reserves under other Acts
- Marine Park Boundary
- DCDB Parcel
- Coastline (median high water)
- Vehicular Track



THIS MAP IS INDICATIVE ONLY AND IS NOT INTENDED FOR NAVIGATIONAL PURPOSES



**Produced by** Marine Parks Project  
Department of Environment, Water and Natural Resources  
GPO BOX 1047 Adelaide SA 5001  
www.marineparks.sa.gov.au

**Data Source** Marine Parks, NPWSA, Topographic Data, Coastline (median high water) - DEWNR (dataset #807, Topography - Coastline, last updated April 2011)  
DCDB - DPTI

**Compiled** 29 October 2012  
**Projection** Geographic  
**Datum** Geocentric Datum of Australia, 1994

© Copyright Department of Environment, Water and Natural Resources 2012. All Rights Reserved. All works and information displayed are subject to Copyright. For the reproduction or publication beyond that permitted by the Copyright Act 1968 (Cwth) written permission must be sought from the Department.

Although every effort has been made to ensure the accuracy of the information displayed, the Department, its agents, officers and employees make no representations, either express or implied, that the information displayed is accurate or fit for any purpose and expressly disclaims all liability for loss or damage arising from reliance upon the information displayed.



# South Australian Marine Park Zoning

## Boundary Definition Sir Joseph Banks Group Marine Park Map 04 Restricted Access Zone 1 Sanctuary Zone 5

### Explanatory Notes:

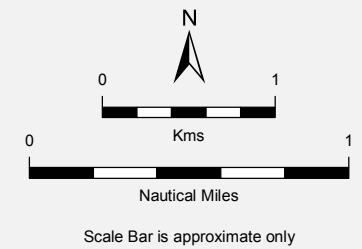
- The coastal boundary of the park is the median high water mark (including the median high water mark of any estuaries), except where-
  - the boundary extends inland from median high water mark to include in the park the areas specified in Schedules 1 and 2 of Rack Plan 1918; and
  - the boundary extends seaward from median high water mark to exclude from the park the areas specified in Schedule 3 of Rack Plan 1918.
- Unless otherwise specified, the seaward boundary of the park is the seaward boundary of the coastal waters of the State.

### Marine Park Zoning

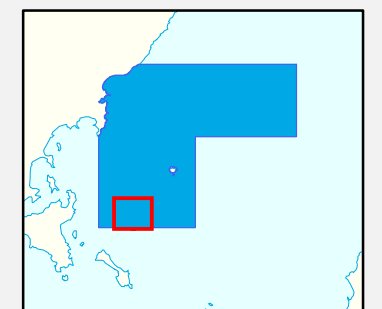
- Restricted Access Zone
- Sanctuary Zone
- Habitat Protection Zone
- General Managed Use Zone

### Topographic

- Existing Reserves under other Acts
- Marine Park Boundary
- Coastline (median high water)



THIS MAP IS INDICATIVE ONLY AND IS NOT INTENDED FOR NAVIGATIONAL PURPOSES



136° 10.283' E  
34° 46.891' S

136° 13.926' E  
34° 46.891' S

136° 10.283' E  
34° 49.828' S

136° 13.926' E  
34° 49.828' S

SZ-5



**RAZ-1**

RAZ-1 is  
Dangerous Reef  
Prohibited Area

DCDB parcels  
include:  
D19498 A1  
D19498 A2

Sir Joseph Banks Group  
Conservation Park

Howard Rock

**Produced by** Marine Parks Project  
Department of Environment, Water and Natural Resources  
GPO BOX 1047 Adelaide SA 5001  
www.marineparks.sa.gov.au

**Data Source** Marine Parks, NPWSA, Topographic Data,  
Coastline (median high water) - DEWNR  
(dataset #807, Topography - Coastline, last  
updated April 2011)

**Compiled  
Projection  
Datum** 2 November 2012  
Geographic  
Geocentric Datum of Australia, 1994

© Copyright Department of Environment, Water and Natural Resources 2012.  
All Rights Reserved. All works and information displayed are subject to Copyright. For  
the reproduction or publication beyond that permitted by the Copyright Act 1968 (Cwth)  
written permission must be sought from the Department.

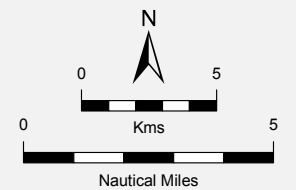
Although every effort has been made to ensure the accuracy of the information displayed,  
the Department, its agents, officers and employees make no representations, either express  
or implied, that the information displayed is accurate or fit for any purpose and expressly  
disclaims all liability for loss or damage arising from reliance upon the information displayed.



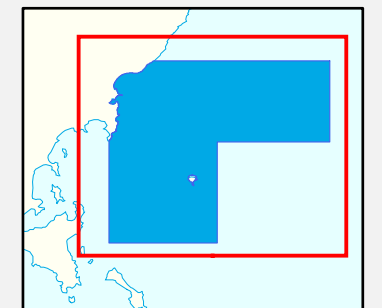
# South Australian Marine Park Zoning

## Boundary Definition Sir Joseph Banks Group Marine Park Map 05 Habitat Protection Zone 2 General Managed Use Zones 1, 2, 3, 4

- Marine Park Zoning**
- █ Restricted Access Zone
  - █ Sanctuary Zone
  - █ Habitat Protection Zone
  - █ General Managed Use Zone
- Topographic**
- █ Built Up Area
  - █ Existing Reserves under other Acts
  - █ Marine Park Boundary
  - █ DCDB Parcel
  - Coastline (median high water)
  - Sealed Road
  - Unsealed Road



THIS MAP IS INDICATIVE ONLY AND IS NOT INTENDED FOR NAVIGATIONAL PURPOSES

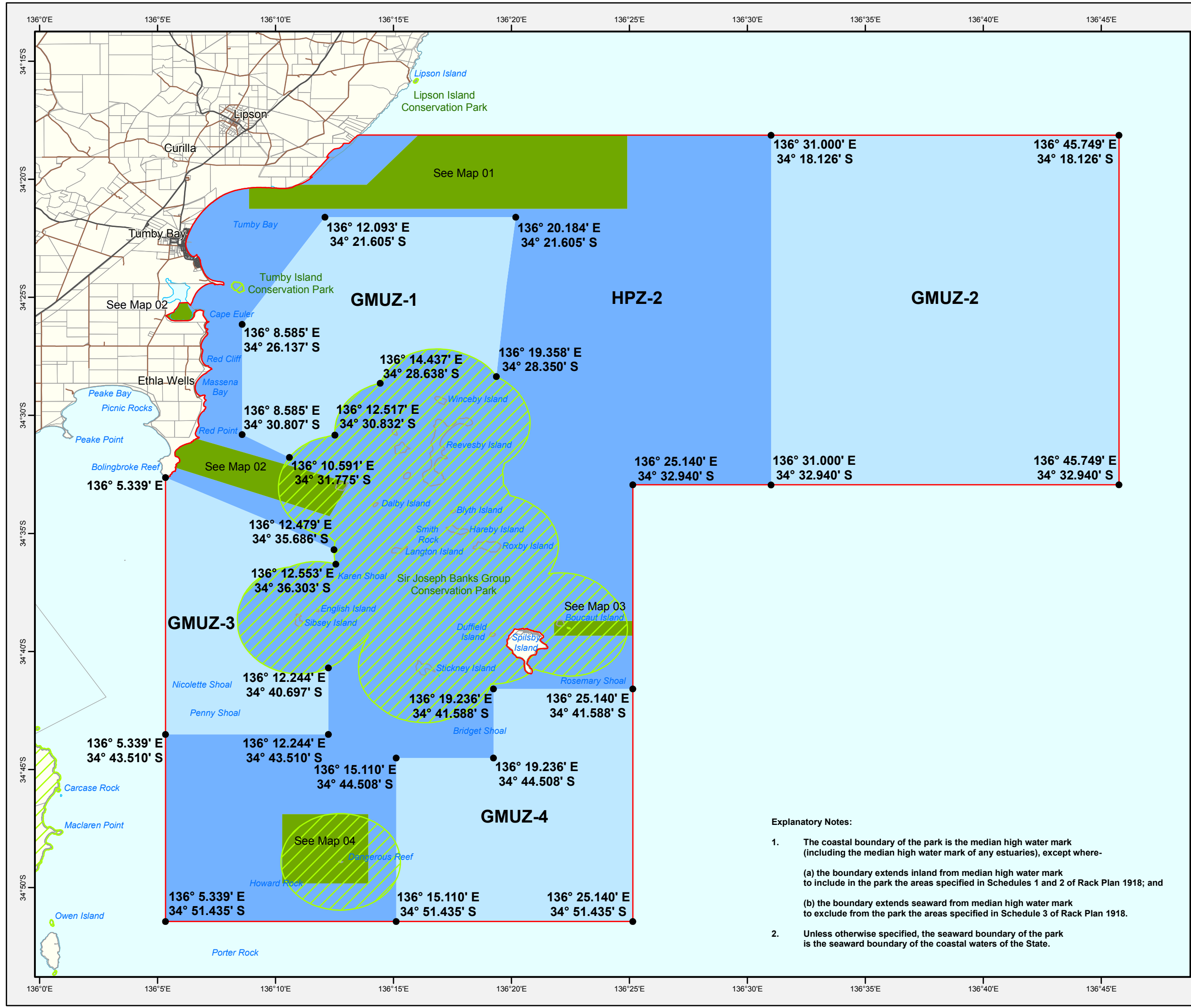


**Produced by** Marine Parks Project  
Department of Environment, Water and Natural Resources  
GPO BOX 1047 Adelaide SA 5001  
[www.marineparks.sa.gov.au](http://www.marineparks.sa.gov.au)

**Data Source** Marine Parks, NPWSA, Topographic Data, Coastline (median high water) - DEWNR (dataset #807, Topography - Coastline, last updated April 2011)  
DCDB - DPTI  
19 November 2012

**Compiled Projection Datum**  
Geographic  
Geocentric Datum of Australia, 1994

© Copyright Department of Environment, Water and Natural Resources 2012. All Rights Reserved. All works and information displayed are subject to Copyright. For the reproduction or publication beyond that permitted by the Copyright Act 1968 (Cwth) written permission must be sought from the Department.  
Although every effort has been made to ensure the accuracy of the information displayed, the Department, its agents, officers and employees make no representations, either express or implied, that the information displayed is accurate or fit for any purpose and expressly disclaims all liability for loss or damage arising from reliance upon the information displayed.



**Explanatory Notes:**

1. The coastal boundary of the park is the median high water mark (including the median high water mark of any estuaries), except where-
  - (a) the boundary extends inland from median high water mark to include in the park the areas specified in Schedules 1 and 2 of Rack Plan 1918; and
  - (b) the boundary extends seaward from median high water mark to exclude from the park the areas specified in Schedule 3 of Rack Plan 1918.
2. Unless otherwise specified, the seaward boundary of the park is the seaward boundary of the coastal waters of the State.