

Environmental Stewardship South Australia 2011-12

Multiple Ecological Communities Project

- PEPPERMINT BOX GRASSY WOODLAND
- IRON-GRASS NATURAL TEMPERATE GRASSLAND

What is the Environmental Stewardship Program?

The Environmental Stewardship Program provides incentive payments for land managers for long term protection of high value environmental assets on private land. The Environmental Stewardship Program is part of the Australian Government's more than \$2 billion Caring for our Country initiative and targets matters of national environmental significance listed under the *Environment Protection and Biodiversity Conservation Act 1999*, in particular threatened ecological communities.

In 2011-12, the Environmental Stewardship Program will use a voluntary incentive funding round for the management and protection of multiple threatened ecological communities in South Australia.

Multiple Ecological Communities (MEC) Project

The MEC Project allows land managers to determine the price they bid to undertake on-ground management actions. The Project will help land managers in the Adelaide and Mount Lofty Ranges, Northern and Yorke, and South Australian Murray-Darling Basin NRM regions to target conservation of peppermint box grassy woodland and iron-grass natural temperate grassland.

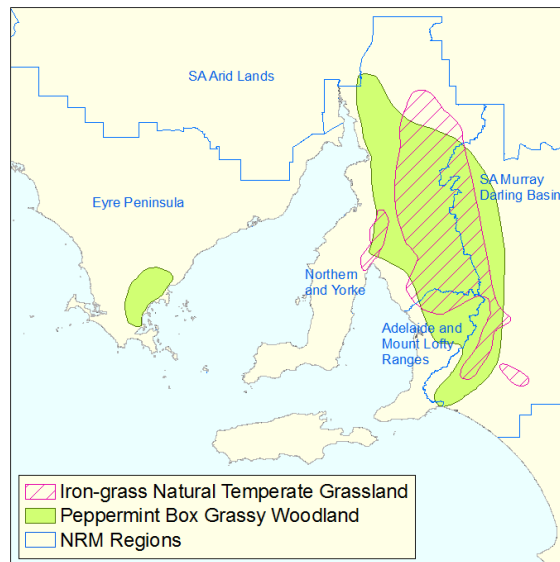
These threatened ecological communities are matters of national environmental significance, with only five percent or less of the pre-European extent remaining. Conserving these grassy ecosystems helps a range of native plants and animals that rely on them for habitat.

The Environmental Stewardship Program will help land managers to choose on-ground management actions that are likely to maintain and improve the condition and extent of their ecological communities. Land managers can bid for payments to control weeds and feral animals, periodically exclude grazing (including fencing), revegetate to re-establish native understorey, and other actions to protect the target ecological communities for up to 15 years.

How do I get involved?

If you are a private land manager in the Adelaide and Mount Lofty Ranges, Northern and Yorke or South Australian Murray-Darling Basin NRM regions and believe that you have one or more of the target ecological communities on your property you can contact the project on 1800 194 304 or your local NRM Board for information about the project. Further contact details are below and at www.nrm.gov.au/stewardship

Participation is voluntary and involves an obligation-free site visit from which a management plan will be developed to reflect the actions the land manager is willing to undertake. Land managers then submit a bid to undertake the commitments and the best value for money bids will be accepted. Successful land managers can enter agreements for payment for up to 15 years of management. More than 60 land managers participated in the project in 2010-11.



Benefits to you

- increase your annual income for up to fifteen years for managing your native vegetation
- receive professional advice on how to manage the native vegetation on your property
- set your own price to suit the undertaking of management actions for the recovery of these sites on your land
- you can play an active role in the protection and improvement of important native vegetation.

South Australia Multiple Ecological Communities Project

For further information, please contact the South Australian Murray-Darling Basin Natural Resources Management Board

Phone: 1800 194 304

Email: enquiries@samdbnrm.sa.gov.au

Post: SA MDB NRM Board

PO Box 2343

MURRAY BRIDGE SA 5253



Government of South Australia

South Australian Murray-Darling Basin
Natural Resources Management Board

www.nrm.gov.au/stewardship