

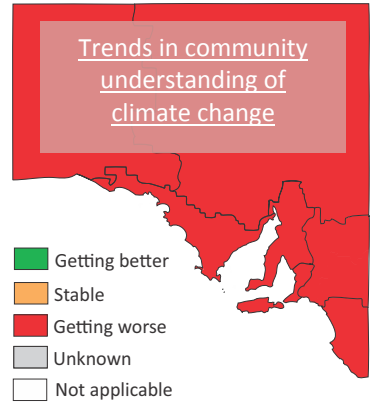
# 2013 State Report Card

## How many South Australians understand the causes and consequences of climate change?

The heat wave that occurred in South Australia in 2013 was a record breaker. At times, temperatures in parts of the state were close to 50 degrees Celsius. Extreme events like this are predicted to occur more often.

Understanding the impacts of climate change will help the community be better prepared for more frequent and severe weather events, which are consequences of climate change.

The Government of South Australia, local Councils and industries are already developing policies and investing significantly to address the impacts of climate change. People's perceptions about climate change can influence their support for climate change policies. Improved understanding of the causes and consequences of climate change could lead to better acceptance of climate change adaptation plans.



**State target**  
Improve capacity to respond to climate change

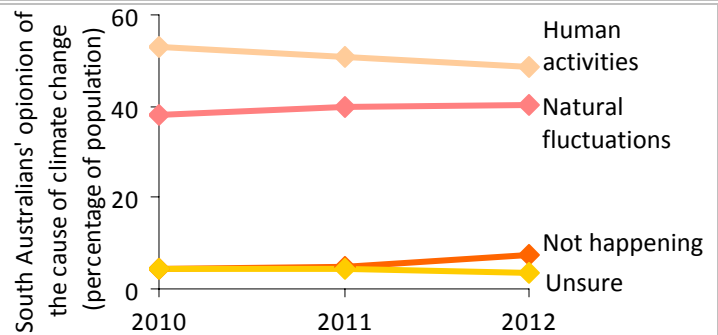
Trend (2010–2012)

Getting worse

Ongoing effort is needed to improve people's understanding of climate change, its causes and its consequences

CSIRO surveys indicate that 89 per cent of South Australians think that the climate is changing. Although almost all experts believe humans are causing the current climate change, the perceptions of the broader community are split between human and natural causes.

Just under half of the people in South Australia think climate change is mainly caused by human activities; a slight decrease since 2010 (graph to right).



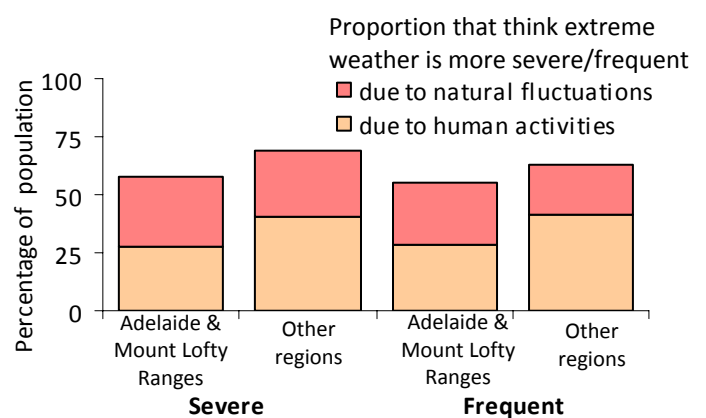
Where we are at (2012)

Fair

89 per cent of South Australians think the climate is changing, only 49 per cent believe it is mostly due to human activities

CSIRO surveys show that about 60 per cent of South Australians think the severity and frequency of record breaking weather events have increased.

The survey allows comparison of the opinions of people in Adelaide and Mount Lofty Ranges NRM region with people in regional South Australia. Relatively more people from regional South Australia think extreme weather events are becoming more frequent and severe. Regional South Australians are also more likely to think that these extreme weather events are a consequence of human activities, rather than natural fluctuations (graph on right).



Reliability of information



Excellent

Further information :

[Technical information for this report card](#)  
[Australian attitudes to Climate Change](#)