

# 2014 Regional Snapshot

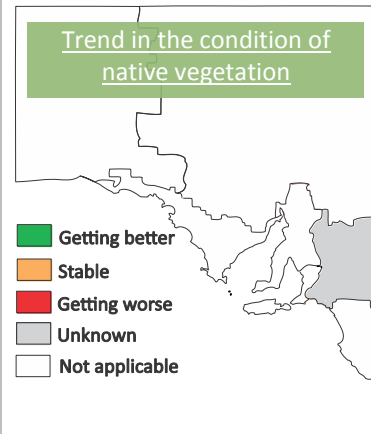
## Is the condition of our native vegetation improving?

South Australia's native vegetation - from small ground covers and native grasses to large trees and water plants - is fundamental to the health of our environment and the prosperity of our primary industries.

Native vegetation protects our land and water from erosion and dry-land salinity, while improving our agricultural productivity and storing [carbon](#). It provides habitat for our native animals, places for recreation, gives our landscape its identity and is culturally important for Aboriginal people.

Human development has affected our native vegetation. It has reduced its [extent](#) (coverage), and decreased its [connectivity](#) (fragmentation). Our remaining native vegetation is under pressure from further fragmentation, inappropriate grazing and fire regimes, weeds, pests, plant diseases and firewood collection. Increasing water extraction, altered water flows, increasing soil salinity, rising groundwater, pollution and climate change are also threats. Several native vegetation communities in the state are now listed as [threatened](#).

This report summarises the condition of our native vegetation, and should be read alongside reports on vegetation [extent and connectivity](#), and [protection](#).



State target

Increase extent and improve condition of native vegetation

Trend

Unknown

This is the first time this information has been collated. Trends will be available in the future.

We monitor the condition of native vegetation to ensure that our management activities are effective. Management includes controlling vegetation clearance, pests, weeds and grazing, and improving land-use practices.

Declines in the condition of our native vegetation since European settlement have largely been a result of agricultural and urban developments. Recent trends in the condition of our native vegetation are not known at regional or state scales (see map above), but its [protection](#) in 1991 and ongoing management aim to improve its condition and [extent](#).

Where we are at (2014)

Fair

Our agricultural and urban developments have degraded much of our native vegetation.

Native vegetation [clearance](#) has been most intense around areas of extensive urban and agricultural development. Monitoring of the remaining vegetation patches in the agricultural part of the SA Murray-Darling Basin NRM region indicates that it is in fair condition (see map on right). The condition of vegetation in the rangelands of the NRM region (north of the Murray River, 20 per cent of the region) has been assessed as fair, but this is based on sparse sampling of this large area.

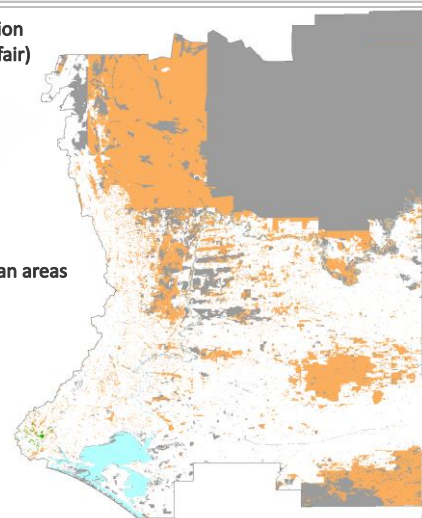
The Department of Environment, Water and Natural Resources is assessing ways to standardise assessments of native vegetation condition for regional and statewide reporting.

We have severely degraded much of our native vegetation. Substantial conservation investments are required to improve its condition and to [connect](#) patches.

Overall vegetation condition in the NRM region is 51 (fair)

Vegetation condition

- Good
- Fair
- Poor
- Unknown
- Agricultural and urban areas



Reliability of information



Fair

Further information: [Technical information for this report](#), [DEWNR native vegetation](#), [Nature Conservation Society of South Australia](#)